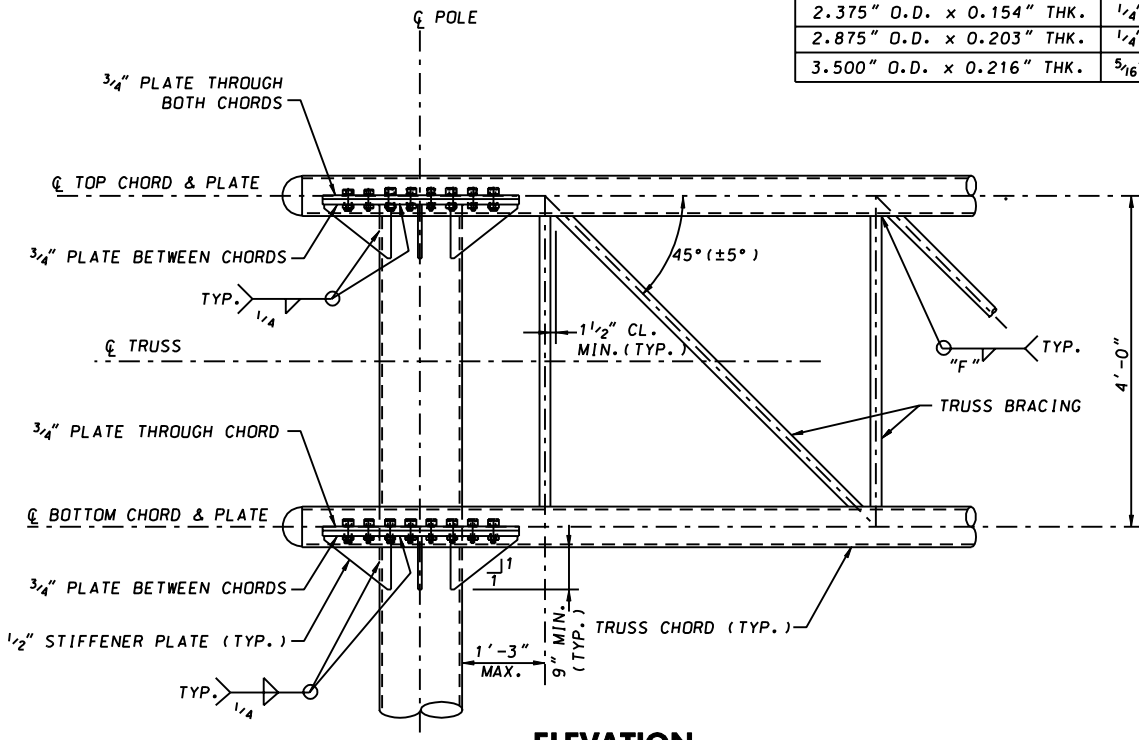


PLAN
(FROM 800 SERIES STANDARD)

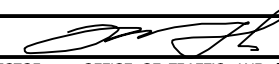

WELDING SIZE TABLE FOR TRUSS BRACING	
MEMBER SIZE	F
1.900" O.D. x 0.145" THK.	1/4"
2.375" O.D. x 0.154" THK.	1/4"
2.875" O.D. x 0.203" THK.	1/4"
3.500" O.D. x 0.216" THK.	5/16"



ELEVATION
(FROM 800 SERIES STANDARD)

NOTES:

1. REFER TO APPROPRIATE 800 SERIES STANDARD PLATE REGARDING ADDITIONAL TRUSS TO POLE CONNECTION DETAILS.
2. FOR OPTIONAL CHORD SPLICE DETAIL REFER TO APPROPRIATE 800 SERIES STANDARD PLATE

SPECIFICATION 803	CATEGORY CODE ITEMS
APPROVED	 DIRECTOR - OFFICE OF TRAFFIC AND SAFETY
	APPROVAL • SHA REVISIONS
	APPROVAL 8-12-02
	REVISED
	REVISED
	APPROVAL • FEDERAL HIGHWAY ADMINISTRATION
	APPROVAL 9-4-02
	REVISED
	REVISED

Maryland Department of Transportation
STATE HIGHWAY ADMINISTRATION
STANDARDS FOR HIGHWAYS AND INCIDENTAL STRUCTURES
BOX TRUSS CANTILEVER SIGN STRUCTURES
TRUSS CHORD TO POLE CONNECTION DETAILS

STANDARD NO.

MD 803.06-05