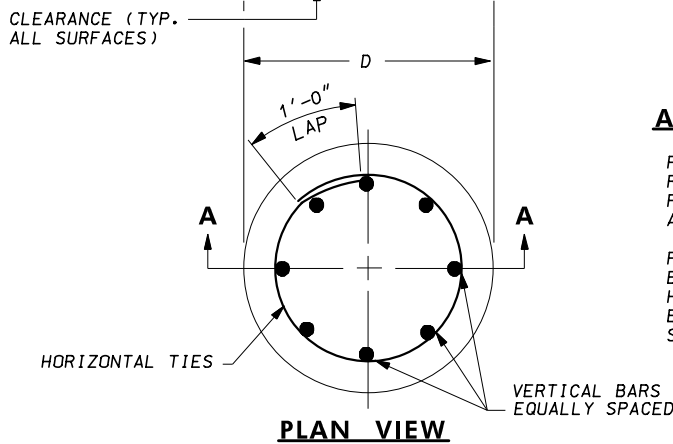
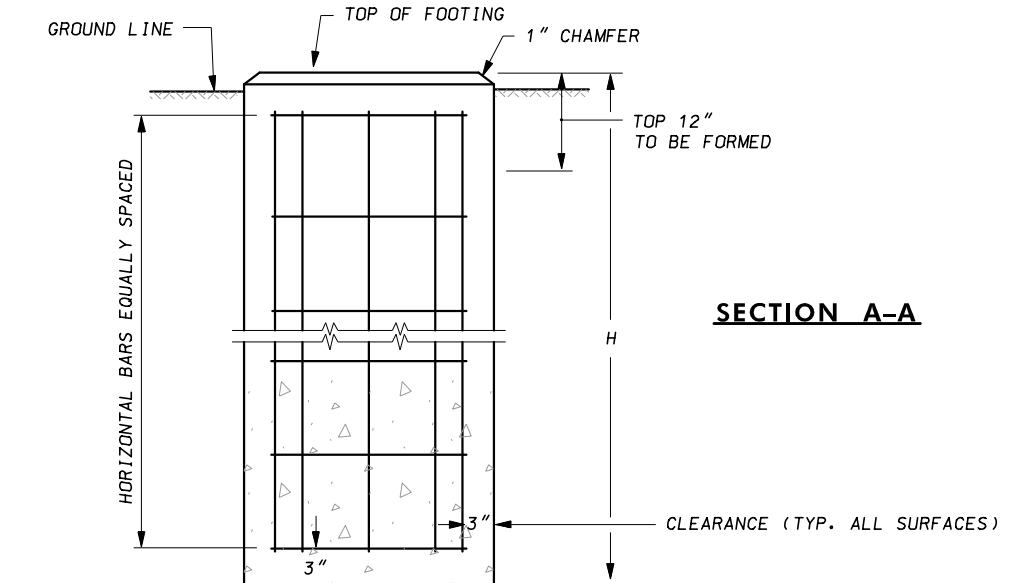


**BREAKAWAY AND NON-BREAKAWAY TYPE A SIGN POST FOUNDATIONS**



**SECTION A-A**

**ANCHOR DETAILS**

FOR NON-BREAKAWAY ANCHOR DETAILS, REFER TO GALVANIZED STEEL BEAM SIGN POSTS NON BREAKAWAY BASE PLATE AND ANCHOR BOLTS STANDARD PLATE.

FOR BREAKAWAY BASE DETAILS, REFER TO BREAKAWAY BASE SUPPORT SYSTEM FOR HIGHWAY SIGNS STANDARD PLATES AND BREAKAWAY POLES ADJUSTMENT FOR GROUND SLOPES STANDARD PLATE.

**FOUNDATION DATA TABLE**

POST SIZE	D	H	VERTICAL REINFORCEMENT	HORIZONTAL REINFORCEMENT	CONCRETE REQ'D C.Y.
W6 x 9	30"	6'-0"	EIGHT (8)- NO.8	SEVEN (7)- NO.4	1.1
W6 x 12 OR TS 5"x 5"x 1/4"	30"	6'-0"	EIGHT (8)- NO.8	SEVEN (7)- NO.4	1.1
W6 x 15 OR W6 x 16 OR TS 6"x 6"x 1/4"	30"	6'-6"	EIGHT (8)- NO.8	SEVEN (7)- NO.4	1.2
W8 x 18	30"	7'-6"	EIGHT (8)- NO.9	EIGHT (8)- NO.4	1.4
W8 x 21 OR TS 7"x 7"x 1/4"	30"	8'-0"	EIGHT (8)- NO.9	NINE (9)- NO.4	1.5
W10 x 22 OR TS 8"x 8"x 5/16"	36"	8'-6"	EIGHT (8)- NO.10	NINE (9)- NO.4	2.3
W10 x 26	36"	9'-0"	EIGHT (8)- NO.10	TEN (10)- NO.4	2.4
W12 x 26	36"	10'-0"	EIGHT (8)- NO.10	ELEVEN (11)- NO.4	2.7
W14 x 30	36"	11'-0"	EIGHT (8)- NO.10	TWELVE (12)- NO.4	2.9
W16 x 31	36"	12'-0"	EIGHT (8)- NO.10	THIRTEEN (13)- NO.4	3.2
W18 x 35 OR W18 X 40	36"	13'-0"	EIGHT (8)- NO.10	FOURTEEN (14)- NO.4	3.5
W21 x 44	42"	12'-0"	TWELVE (12)- NO.10	THIRTEEN (13)- NO.4	4.3

SPECIFICATION <b>801, 802</b>	CATEGORY CODE ITEMS
APPROVED	<i>Cedric Wall</i> DIRECTOR - OFFICE OF TRAFFIC AND SAFETY
APPROVAL SHA REVISIONS	APPROVAL FEDERAL HIGHWAY ADMINISTRATION
APPROVAL 2-21-95	APPROVAL 2-21-95
REVISED 5-17-07	REVISED 5-2-07
REVISED 5-18-20	REVISED 3-10-20
REVISED	REVISED

**MDOT** MARYLAND DEPARTMENT OF TRANSPORTATION  
STATE HIGHWAY ADMINISTRATION

STANDARDS FOR HIGHWAYS AND INCIDENTAL STRUCTURES  
**GALVANIZED STEEL BEAM SIGN POSTS  
FOUNDATION DETAILS - TYPE A**

**STANDARD NO. MD 801.04**