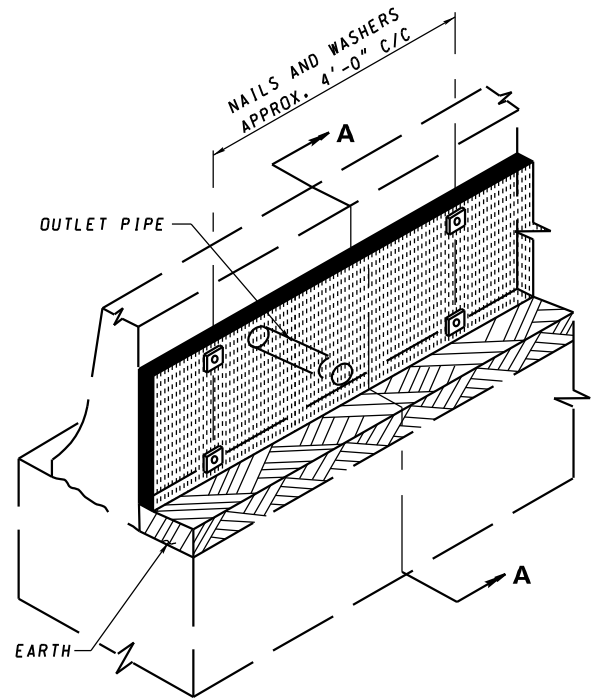


**SECTION A-A**  
(THROUGH CENTER OF OUTLET PIPE)



**ISOMETRIC**

**NOTES**

1. THE PREFABRICATED LONGITUDINAL EDGE DRAIN MAY BE USED AS AN ALTERNATE DRAINAGE SYSTEM IN LIEU OF THE DRAINAGE SHOWN ON THE PERTINENT BARRIER STANDARD.
2. COST OF THE PREFABRICATED LONGITUDINAL EDGE DRAIN IS INCIDENTAL TO THE PRICE PER LINEAR FOOT FOR THE PERTINENT BARRIER PAY ITEM.
3. TOLERANCES IN DIMENSIONS SHOWN SHALL BE WITHIN 1/4".
4. FOR LIMITS OF EXCAVATION REFER TO THE PERTINENT BARRIER STANDARD.
5. F-SHAPE CONCRETE TRAFFIC BARRIER DETAILS SHOWN. SINGLE SLOPE CONCRETE TRAFFIC BARRIER DETAILS SIMILAR.

<b>SPECIFICATION</b> 604	<b>CATEGORY CODE ITEMS</b>	
<b>APPROVED</b>	<i>Charles P. ...</i> DIRECTOR - OFFICE OF HIGHWAY DEVELOPMENT	
<b>APPROVAL</b>	<b>SH A REVISIONS</b>	<b>FEDERAL HIGHWAY ADMINISTRATION</b>
APPROVAL	3-1-01	APPROVAL 3-28-01
REVISED	10-1-01	REVISED
REVISED	6-27-23	REVISED 6-21-23
REVISED		REVISED

**MDOT** MARYLAND DEPARTMENT OF TRANSPORTATION  
STATE HIGHWAY ADMINISTRATION

**STANDARDS FOR HIGHWAYS AND INCIDENTAL STRUCTURES**  
**ALTERNATE PREFABRICATED LONGITUDINAL**  
**EDGE DRAIN FOR CONCRETE TRAFFIC BARRIER**

**STANDARD NO.**

**MD 648.47-01**