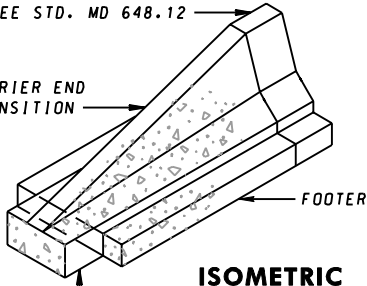


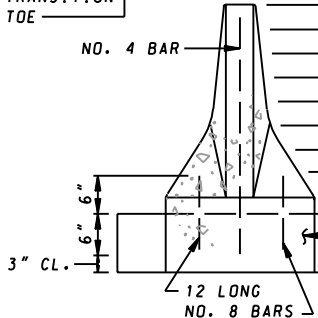
NORMAL MEDIAN BARRIER
SEE STD. MD 648.12

BARRIER END
TRANSITION



ISOMETRIC

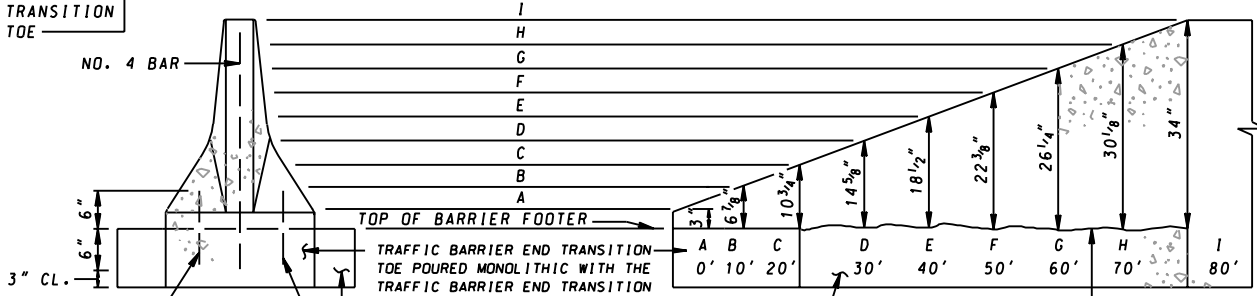
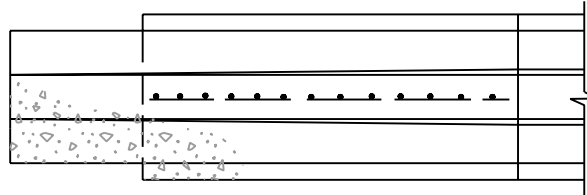
END
TRANSITION
TOE



END VIEW

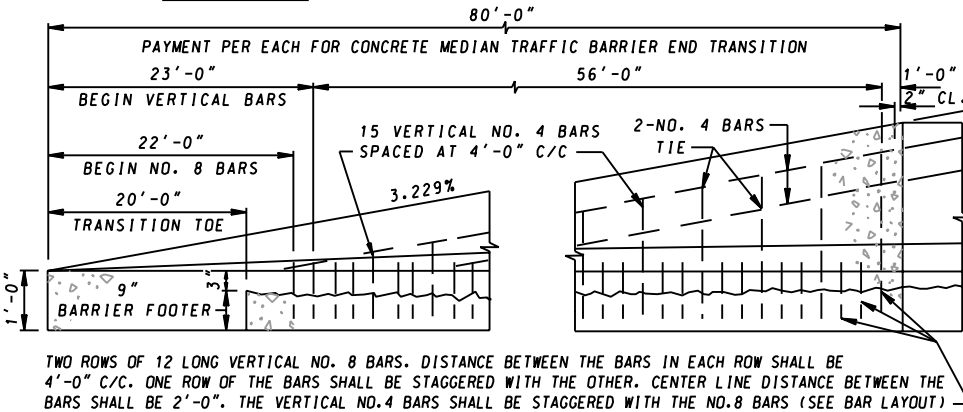
THIS END TRANSITION IS APPLICABLE
TO ALL MEDIAN BARRIER BEGINNING OR
ENDING WITH THE 34 INCH CONCRETE
MEDIAN TRAFFIC BARRIER.

PLAN



ELEVATION

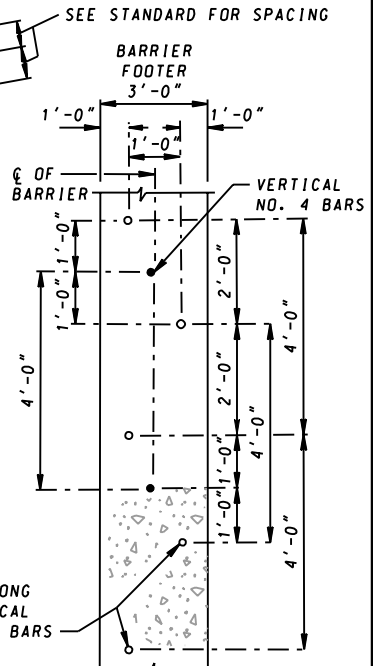
ROUGHEN CONSTR.
JOINT. (TYPICAL FOR
CONSTR. ON BARRIER
FOOTER & EXIST.
RIGID PAVEMENT)



REINFORCEMENT STEEL DETAILS

NOTES

1. THE TRAFFIC BARRIER END TRANSITION SHALL BE CONSTRUCTED USING THE FIXED FORM METHOD. NO FOOTER IS REQUIRED WHEN THE BARRIER IS CONSTRUCTED ON EXISTING RIGID PAVEMENT. BARRIER AND FOOTER SHALL BE CAST SEPARATELY. MONOLITHIC PLACEMENT NOT PERMITTED. SEE STD. MD 648.13 FOR BARRIER FOOTER DETAILS.
2. THE TRAFFIC BARRIER END TRANSITION AND BARRIER FOOTER SHALL BE CONSTRUCTED USING CONCRETE MIX NO.6 (4500 PSI).
3. ALL REINFORCEMENT BARS, INCLUDING ENDS AND TIES, SHALL BE EPOXY COATED. ALL BAR LAPS TO BE 30 BAR DIAMETERS. TIE BARS TOGETHER.
4. THIS TRAFFIC BARRIER END TRANSITION IS PROHIBITED WHEN THE DESIGN SPEED IS 45 MPH OR GREATER. THE ENGINEER MUST DETERMINE THE TYPE OF END TREATMENT FOR DESIGN SPEEDS OVER 45 MPH.
5. COST OF THE CONCRETE BARRIER FOOTER (IF REQUIRED) SHALL BE INCIDENTAL TO THE CONTRACT UNIT PRICE PER EACH FOR THE CONCRETE MEDIAN TRAFFIC BARRIER END TRANSITION.
6. WHEN THE BARRIER END TRANSITION IS CONSTRUCTED ON EXISTING RIGID PAVEMENT THE COST OF ROUGHENING THE PAVEMENT SURFACE, EXCAVATION FOR TRANSITION TOE, REINFORCEMENT, DRILLED HOLES, GROUT, LABOR, TOOLS, EQUIPMENT, ETC., SHALL BE INCIDENTAL TO THE CONTRACT UNIT PRICE PER EACH FOR THE ITEM SPECIFIED IN NOTE 5.
7. TOLERANCES IN DIMENSIONS SHOWN SHALL BE WITHIN 1/4". **JERSEY SHAPE - FOR REPLACEMENT PURPOSES ONLY**



**PLAN VIEW
END TRANSITION
BAR LAYOUT**

SPECIFICATION 604	CATEGORY CODE ITEMS
APPROVED <i>Kirk G. McCall</i> DIRECTOR - OFFICE OF HIGHWAY DEVELOPMENT	
	APPROVAL • SHA REVISIONS
	APPROVAL 7-16-90
	REVISED 10-1-01
	REVISED
APPROVAL • FEDERAL HIGHWAY ADMINISTRATION	
APPROVAL 7-31-90	
REVISED 3-28-01	
REVISED	
REVISED	

**Maryland Department of Transportation
STATE HIGHWAY ADMINISTRATION**
STANDARDS FOR HIGHWAYS AND INCIDENTAL STRUCTURES
**CONCRETE JERSEY SHAPE MEDIAN TRAFFIC
BARRIER END TRANSITION**

STANDARD NO. MD 648.18