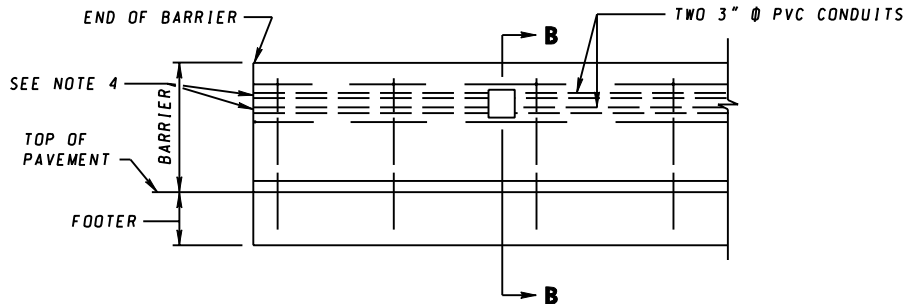
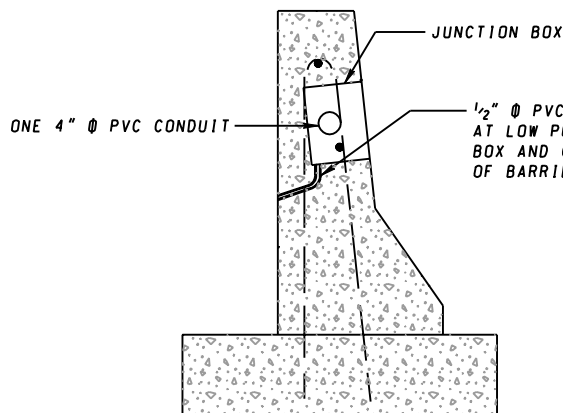


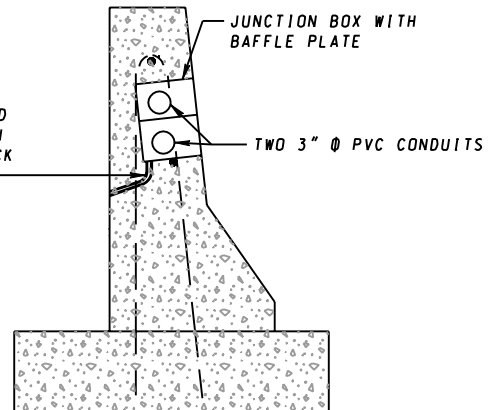
ELEVATION
(SINGLE CONDUIT)



ELEVATION
(DOUBLE CONDUIT)



SECTION A-A
SINGLE CONDUIT



SECTION B-B
DOUBLE CONDUIT

NOTES

1. THE JUNCTION BOXES SHALL BE LOCATED EVERY 750 FEET OR AS DIRECTED BY THE ENGINEER.
2. THE COST OF THE CONDUITS, JUNCTION BOXS, AND ALL APPURTENANCES SHALL BE INCLUDED IN THE COST OF THE BARRIER UNLESS OTHERWISE SPECIFIED.
3. IN INSTANCES WHERE THE BARRIER CONNECTS TO A BRIDGE PARAPET CONTAINING CONDUIT SHALL ALIGN.
4. CAP CONDUIT, COVER WITH 1" CONCRETE AND MARK FOR FUTURE REFERENCE, OR PROVIDE END TREATMENT AS DIRECTED BY THE ENGINEER OR AS SHOWN ON THE PLANS.
5. REFER TO SECTION 805 FOR CONDUIT, ETC.

JERSEY SHAPE - FOR REPLACEMENT PURPOSES ONLY

SPECIFICATION 604	CATEGORY CODE ITEMS
-----------------------------	---------------------

APPROVED *Kirk G. McCall*
DIRECTOR - OFFICE OF HIGHWAY DEVELOPMENT

SHA State Highway Administration	APPROVAL • SHA REVISIONS	APPROVAL • FEDERAL HIGHWAY ADMINISTRATION
	APPROVAL 7-16-90	APPROVAL 7-31-90
	REVISED 10-1-01	REVISED 3-28-01
	REVISED	REVISED

Maryland Department of Transportation
STATE HIGHWAY ADMINISTRATION
STANDARDS FOR HIGHWAYS AND INCIDENTAL STRUCTURES
CONDUIT AND JUNCTION BOX LOCATION
FOR CONCRETE JERSEY SHAPE TRAFFIC
BARRIER SINGLE FACE - ALL TYPES

STANDARD NO. MD 648.06