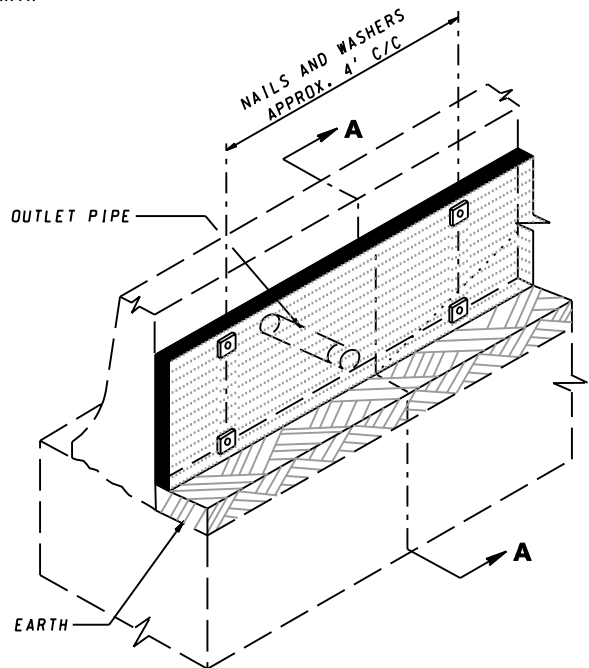


SECTION A-A
(THROUGH CENTER OF OUTLET PIPE)




ISOMETRIC

NOTES

1. THE PREFABRICATED LONGITUDINAL EDGE DRAIN MAY BE USED AS AN ALTERNATE DRAINAGE SYSTEM IN LIEU OF THE DRAINAGE SHOWN ON STD. MD 648.03 CONCRETE TRAFFIC BARRIER SINGLE FACE TYPE 3 (BOTTOM OF CUT OR TOE OF FILL).
2. COST OF THE PREFABRICATED LONGITUDINAL EDGE DRAIN IS INCIDENTAL TO THE CONTRACT UNIT PRICE PER LINEAR FOOT FOR CONCRETE TRAFFIC BARRIER SINGLE FACE TYPE 3.
3. TOLERANCES IN DIMENSIONS SHOWN SHALL BE WITHIN 1/4".
4. FOR LIMITS OF EXCAVATION REFER TO STD. MD 648.03 NOTE 5.

JERSEY SHAPE - FOR REPLACEMENT PURPOSES ONLY

SPECIFICATION 604	CATEGORY CODE ITEMS		
APPROVED	<i>Kirk G. McCall</i> DIRECTOR - OFFICE OF HIGHWAY DEVELOPMENT		
	APPROVAL • SHA REVISIONS	APPROVAL • FEDERAL HIGHWAY ADMINISTRATION	
	APPROVAL 7-16-90	APPROVAL 7-31-90	
	REVISED 10-1-01	REVISED 3-28-01	
	REVISED	REVISED	

Maryland Department of Transportation
STATE HIGHWAY ADMINISTRATION
 STANDARDS FOR HIGHWAYS AND INCIDENTAL STRUCTURES
PREFABRICATED LONGITUDINAL EDGE DRAIN
FOR CONCRETE JERSEY SHAPE TRAFFIC
BARRIER SINGLE FACE TYPE 3

STANDARD NO. MD 648.03-01