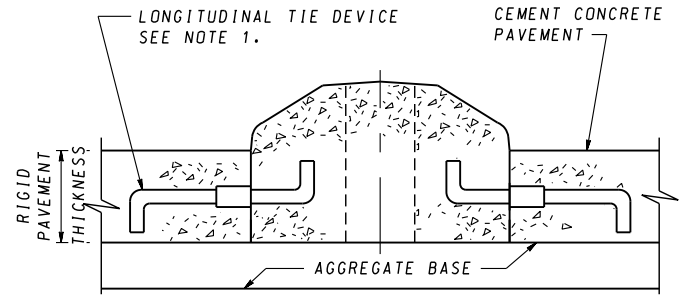


**SECTION A-A
TYPE B-1**

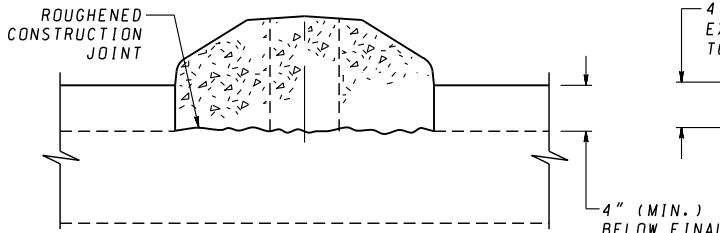
PLACED WITH APPROVED ASPHALT MIX PAVEMENT

DEPTH OF GUTTER PAN TO MATCH LAMINATIONS OF PROPOSED PAVING SECTION AS CLOSELY AS POSSIBLE



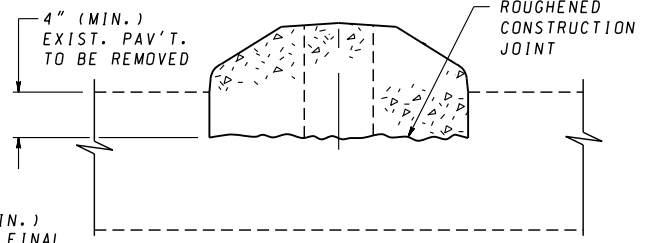
**SECTION A-A
TYPE B-2**

PLACED WITH CEMENT CONCRETE PAVEMENT



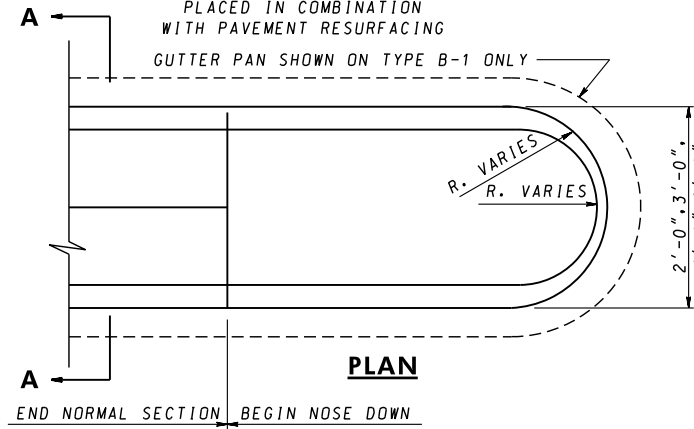
**SECTION A-A
TYPE B-3**

PLACED IN COMBINATION WITH PAVEMENT RESURFACING

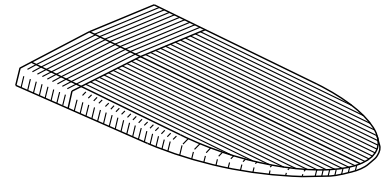


**SECTION A-A
TYPE B-4**

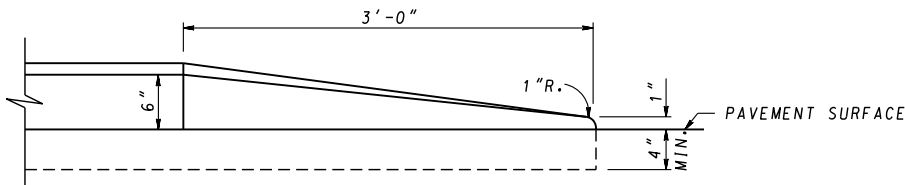
PLACED ON EXISTING PAVEMENT



PLAN



**ISOMETRIC - NOSE DOWN
(SHOWN WITHOUT GUTTER PAN)**



ELEVATION

NOSE DOWN AT APPROACH END OF MEDIAN

NOTES

- UNLESS OTHERWISE SPECIFIED, LONGITUDINAL TIE BAR DEVICE, TYPE 'A' OR TYPE 'B', PLACED AT MIDDLE OF KEYWAY & SPACED ACCORDING TO SPECIFICATIONS FOR CONCRETE PAVEMENT SHALL BE USED AT CONSTRUCTION JOINT BETWEEN MONOLITHIC CONCRETE MEDIAN (OR GUTTER PAN) AND CONCRETE PAVEMENT. SEE STANDARD MD 572.61. SOLID BAR AND SLEEVE MAY BE REPLACE BY TUBE WITH INTERNAL THREAD.
- JOINT SPACING WILL BE A MAXIMUM OF 10'-0" APART, SEE SPECIFICATIONS FOR LOCATION AND DESCRIPTION OF TREATMENT FOR THE TYPES OF JOINTS USED. CONCRETE PAVEMENT, JOINTS SHALL MATCH PAVEMENT JOINTS.
- ALLOW 4" Ø HOLES IN MEDIAN FOR SIGNS, SPACED AS SHOWN ON PLANS OR AS DIRECTED BY THE ENGINEER.

SPECIFICATION	CATEGORY CODE ITEMS	
APPROVED	<i>[Signature]</i> DIRECTOR - OFFICE OF HIGHWAY DEVELOPMENT	
SHA State Highway Administration	APPROVAL • SHA REVISIONS	APPROVAL • FEDERAL HIGHWAY ADMINISTRATION
	APPROVAL 3-15-83	APPROVAL 4-1-83
	REVISED 2-25-16	REVISED 2-23-16
	REVISED	REVISED
	REVISED	REVISED

**Maryland Department of Transportation
STATE HIGHWAY ADMINISTRATION**
STANDARDS FOR HIGHWAYS AND INCIDENTAL STRUCTURES
**STANDARD MONOLITHIC CONCRETE MEDIAN
TYPE 'B'**

STANDARD NO.

MD 645.02