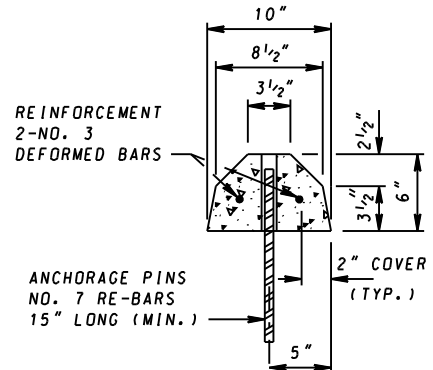
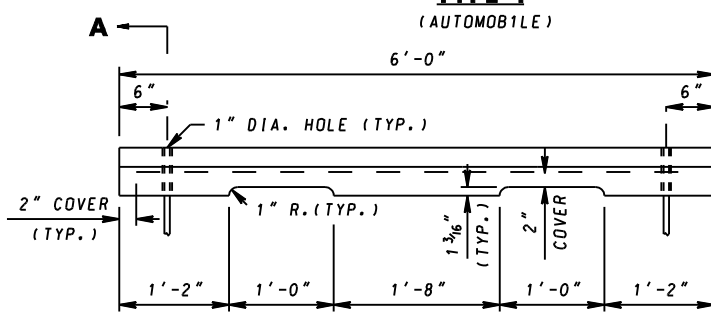


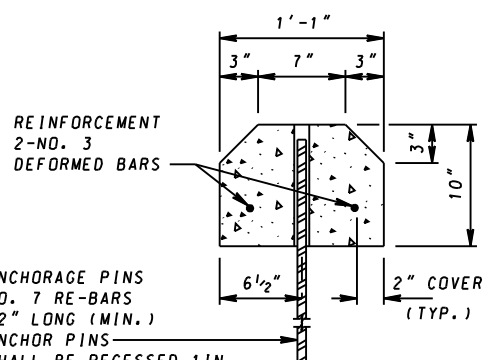
**ELEVATION  
TYPE I  
(AUTOMOBILE)**



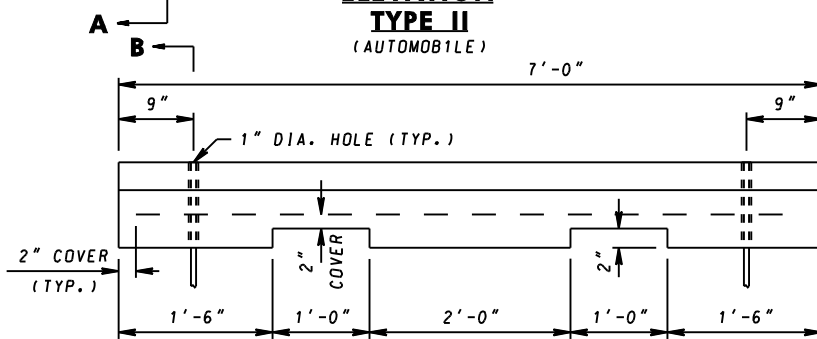
**SECTION A-A  
(TYPICAL-TYPE I & II)**



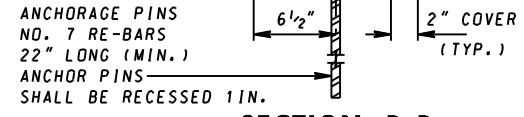
**ELEVATION  
TYPE II  
(AUTOMOBILE)**



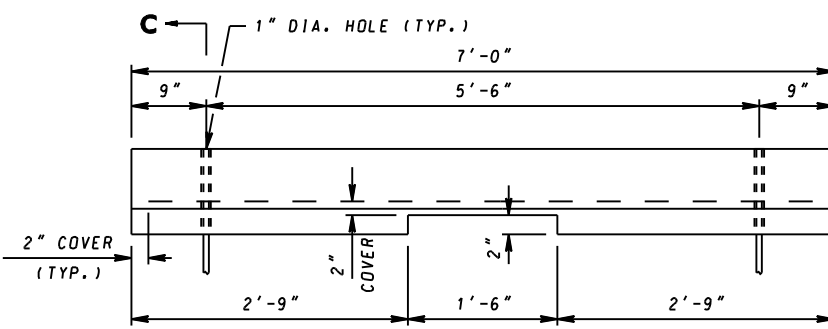
**SECTION B-B**



**ELEVATION  
TYPE III-A  
(TRUCK)**




**SECTION C-C**



**ELEVATION  
TYPE III-B  
(TRUCK)**

**NOTE**

1. PRECAST CONCRETE WHEEL STOPS SHALL BE LOCATED AS SHOWN ON THE PLANS, THEN SECURED IN PLACE WITH TWO (2) NO. 7 REINFORCEMENT BARS PER WHEEL STOP.
2. COST OF THE REINFORCEMENT BARS WILL BE INCIDENTAL TO THE CONTRACT UNIT PRICE BID PER EACH FOR THE WHEEL STOPS.

SPECIFICATION <b>608</b>	CATEGORY CODE ITEMS
APPROVED	<i>Kirk G. McCallum</i> DIRECTOR - OFFICE OF HIGHWAY DEVELOPMENT
	APPROVAL • SHA REVISIONS
	APPROVAL • FEDERAL HIGHWAY ADMINISTRATION
	APPROVAL 10-26-82
	APPROVAL 5-17-83
	APPROVAL 6-20-07
APPROVAL 8-1-84	
REVIS	REVIS
REVIS	REVIS
REVIS	REVIS

**Maryland Department of Transportation**  
**STATE HIGHWAY ADMINISTRATION**  
 STANDARDS FOR HIGHWAYS AND INCIDENTAL STRUCTURES  
**PRECAST CONCRETE WHEEL STOPS**  
**STANDARD NO. MD 634.04**