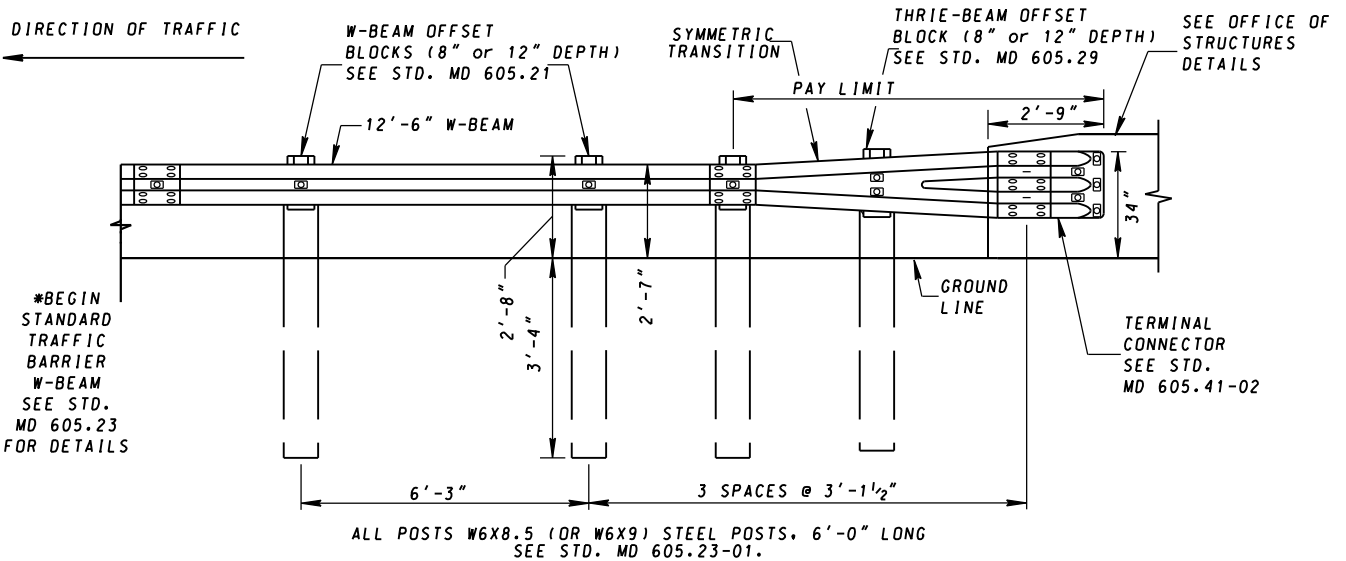
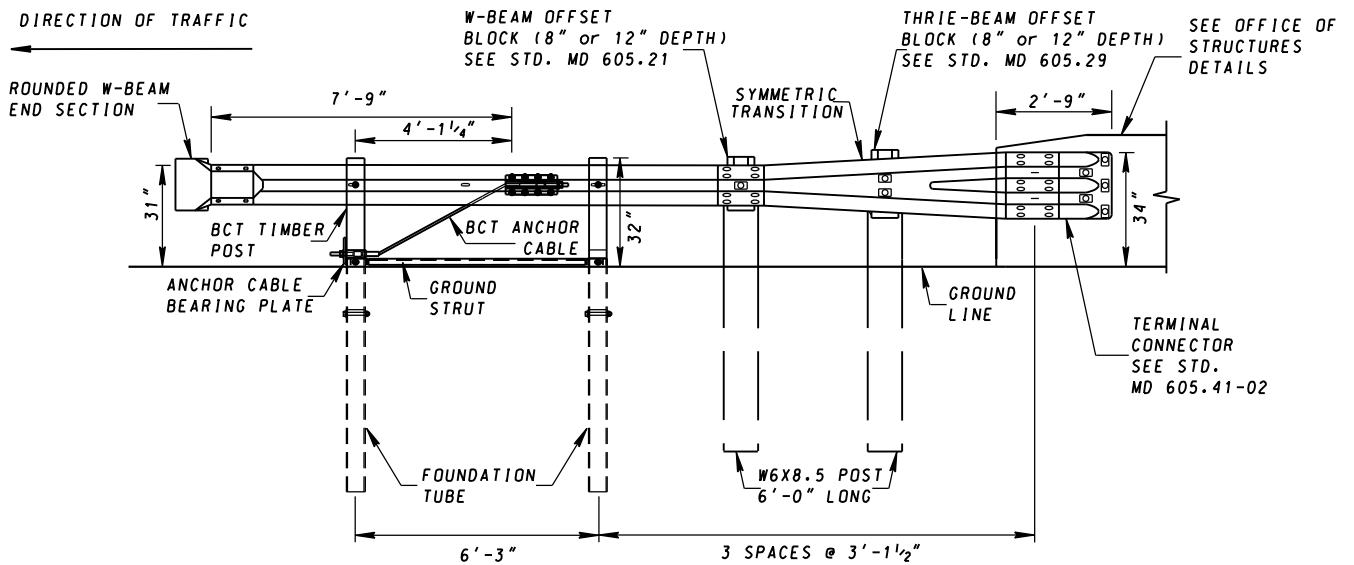


DIRECTION OF TRAFFIC



**ELEVATION VIEW
CONNECTING TO W-BEAM**

DIRECTION OF TRAFFIC



**ELEVATION VIEW
CONNECTING TO END TREATMENT**

NOTES

1. THIS TYPE OF ANCHORAGE IS TO BE USED ONLY ON THE TRAILING END OF A STRUCTURE ON A HIGHWAY WITH DIRECTIONAL ONE WAY TRAFFIC.
2. THRIE-BEAM TERMINAL CONNECTOR, SYMMETRIC TRANSITION SECTION, AND W-BEAM SECTIONS SHALL BE LAPPED IN THE DIRECTION OF TRAFFIC.
3. THE TRAFFIC BARRIER THRIE-BEAM ANCHORAGE AT BRIDGE END POSTS SHALL BE PLACED ON SLOPES 10:1 OR FLATTER.
4. FOR TERMINAL CONNECTOR AND TRANSITION SECTION, SEE STD. MD 605.41-02.
5. FOR END TREATMENT, SEE STD. MD 605.10.
6. "TRAFFIC BARRIER THRIE-BEAM ANCHORAGE TO VERTICAL FACE DOWNSTREAM" PAID FOR BY EACH. SEE STD. MD 605.10 FOR PAYMENT OF THE END TREATMENT.

SPECIFICATION 605	CATEGORY CODE ITEMS
APPROVED	<i>[Signature]</i> DIRECTOR - OFFICE OF HIGHWAY DEVELOPMENT
APPROVAL SHA REVISIONS	APPROVAL FEDERAL HIGHWAY ADMINISTRATION
APPROVAL 3-16-22	APPROVAL 2-24-22
REVISED	REVISED
REVISED	REVISED
REVISED	REVISED

MOT MARYLAND DEPARTMENT OF TRANSPORTATION
STATE HIGHWAY ADMINISTRATION

**STANDARDS FOR HIGHWAYS AND INCIDENTAL STRUCTURES
TRAFFIC BARRIER THRIE-BEAM
ANCHORAGE TO VERTICAL FACE
DOWNSTREAM**

STANDARD NO. 605.45