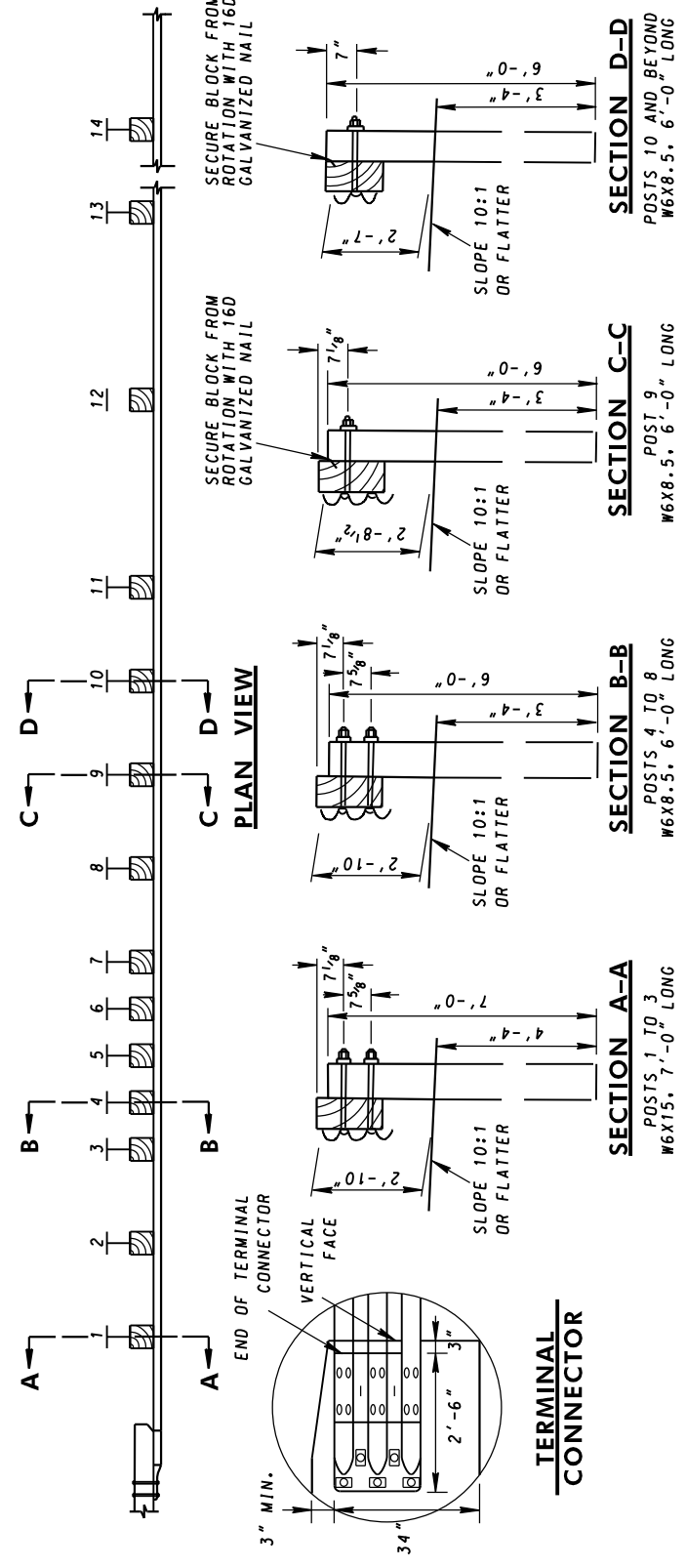


ELEVATION VIEW



PLAN VIEW

TERMINAL CONNECTOR

NOTES

1. ALL BLOCKOUTS TO BE EITHER 6"x12"x19" (THRIE-BEAM) OR 6"x12"x14" (W-BEAM).
2. THRIE-BEAM TERMINAL CONNECTOR, THRIE-BEAM SECTIONS, AND W-BEAM SECTIONS SHALL BE LAPPED IN THE DIRECTION OF TRAFFIC.
3. THE TRAFFIC BARRIER THRIE-BEAM ANCHORAGE AT BRIDGE END POSTS SHALL BE PLACED ON SLOPES 10:1 OR FLATTER.
4. FOR THRIE-BEAM DETAILS, INCLUDING STEEL POSTS, OFFSET BLOCKS, AND SPLICES, SEE STD. MD 605.29.
5. FOR TERMINAL CONNECTOR AND TRANSITION SECTION, SEE STD. MD 605.41-02.
6. A 4" CURB MAY BE ADDED BELOW THE TRAFFIC BARRIER THRIE-BEAM SYSTEM, IF A CURB IS USED. PLACE DOUBLE (NESTED) W-BEAM IN THIS SECTION.

SPECIFICATION 605	CATEGORY CODE ITEMS
APPROVED	<i>[Signature]</i> DIRECTOR - OFFICE OF HIGHWAY DEVELOPMENT
APPROVAL SHA REVISIONS	APPROVAL FEDERAL HIGHWAY ADMINISTRATION
APPROVAL 2-25-20	APPROVAL 2-24-20
REVISED 3-16-22	REVISED 2-24-22
REVISED	REVISED
REVISED	REVISED

MDOT MARYLAND DEPARTMENT OF TRANSPORTATION
STATE HIGHWAY ADMINISTRATION

**STANDARDS FOR HIGHWAYS AND INCIDENTAL STRUCTURES
TRAFFIC BARRIER THRIE-BEAM
ANCHORAGE TO VERTICAL FACE**

STANDARD NO. 605.41