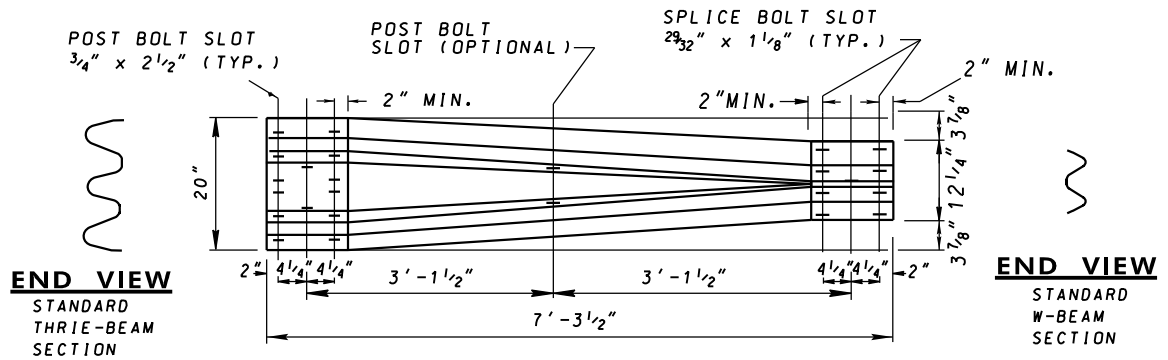


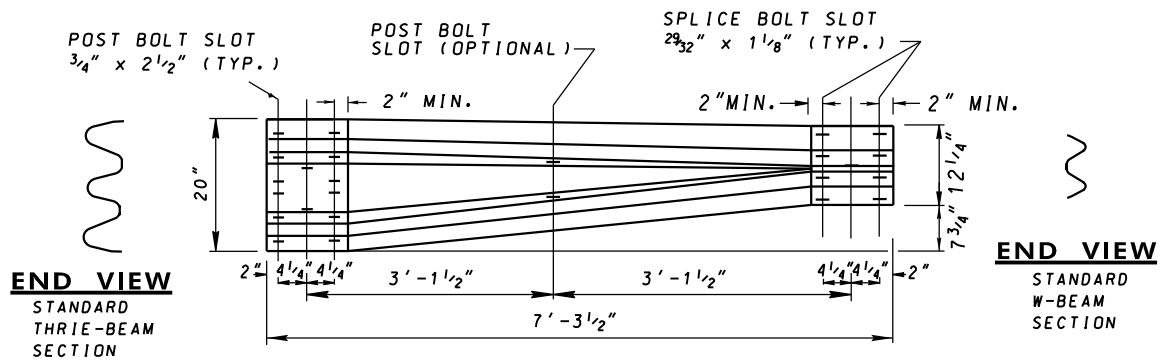
RECTANGULAR PLATE WASHER

THRIE-BEAM TERMINAL CONNECTOR



SYMMETRIC

W-BEAM - THRIE-BEAM TRANSITION SECTION



ASYMMETRIC

W-BEAM - THRIE-BEAM TRANSITION SECTION

NOTE

1. RECTANGULAR PLATE WASHERS SHALL BE MADE OF STEEL MEETING THE REQUIREMENTS OF ASTM A 36 AND SHALL BE GALVANIZED IN ACCORDANCE WITH THE REQUIREMENTS OF ASTM A 123. HOLE MAY BE PUNCHED OR DRILLED.

SPECIFICATION 605	CATEGORY CODE ITEMS	
APPROVED	<i>Cristina</i> DIRECTOR - OFFICE OF HIGHWAY DEVELOPMENT	
APPROVAL REVISIONS	APPROVAL FEDERAL HIGHWAY ADMINISTRATION	
APPROVAL 4-27-89	APPROVAL 5-5-89	
REVISED 8-16-12	REVISED 8-13-12	
REVISED 2-25-20	REVISED 2-24-20	
REVISED 3-16-22	REVISED 2-24-22	

MDOT MARYLAND DEPARTMENT OF TRANSPORTATION
STATE HIGHWAY ADMINISTRATION

**STANDARDS FOR HIGHWAYS AND INCIDENTAL STRUCTURES
TRAFFIC BARRIER TERMINAL CONNECTOR
AND W-BEAM TO THRIE-BEAM
TRANSITION SECTION**

STANDARD NO. MD 605.41-02