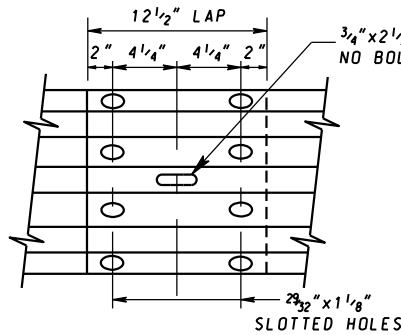
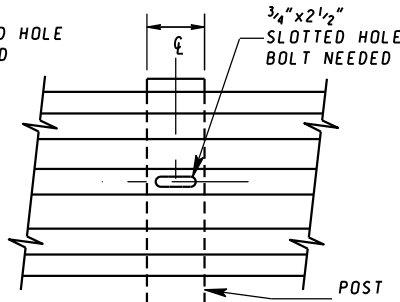


ELEVATION VIEW



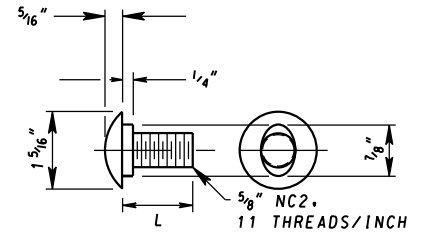
FRONT VIEW

SPLICE
(BOLTS NOT SHOWN)



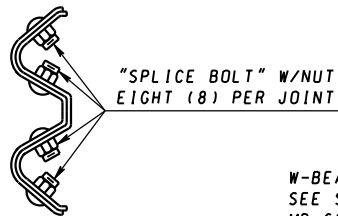
FRONT VIEW

POST WITH W-BEAM RAIL
(BOLT NOT SHOWN)



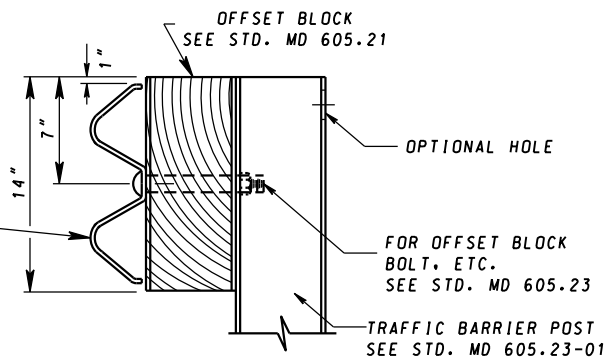
L=1 1/4" FOR SPLICE BOLT
(FULL LENGTH THREADS)
L=2" FOR SPLICE WITH
NESTED RAIL BOLT
(FULL LENGTH THREADS)
L=10" FOR STEEL POST WITH
8" BLOCKOUT BOLT
SEE NOTE
L=14" FOR STEEL POST WITH
12" BLOCKOUT BOLT

BOLT



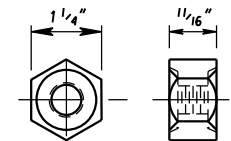
SIDE VIEW

SPLICE



SIDE VIEW

POST WITH W-BEAM RAIL

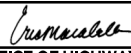


ALTERNATE-SINGLE
RECESS NUTS MAY
BE SUBSTITUTED
5/8" NC2, 11 THREADS/INCH
1 5/16" DIA. X 3/32"
DEEP RECESS TWO SIDES

NUT

NOTES

1. FOR COMPOSITE OFFSET BLOCKS SEE NOTE 3 ON STD. MD 605.21.
2. THE CONTRACTOR HAS THE OPTION TO USE SHORTER BOLTS WITH A MINIMUM OF 1/2" PROTRUSION BEYOND NUT.
3. WITH ENGINEER'S APPROVAL, ONE POST CAN BE OMITTED WITHOUT OTHER CHANGES. A MINIMUM OF EIGHT POSTS MUST BE INSTALLED BETWEEN OMITTED POSTS.

SPECIFICATION 605	CATEGORY CODE ITEMS
APPROVED	 DIRECTOR - OFFICE OF HIGHWAY DEVELOPMENT
APPROVAL SHA REVISIONS	APPROVAL FEDERAL HIGHWAY ADMINISTRATION
APPROVAL 5-6-76	APPROVAL 9-30-76
REVISED 1-9-20	REVISED 12-23-19
REVISED 2-25-20	REVISED 2-24-20
REVISED 3-16-22	REVISED 2-24-22

MOT MARYLAND DEPARTMENT OF TRANSPORTATION
STATE HIGHWAY ADMINISTRATION

**STANDARDS FOR HIGHWAYS AND INCIDENTAL STRUCTURES
TRAFFIC BARRIER W-BEAM,
W-BEAM SPLICES AND
OFFSET BLOCK**

STANDARD NO. MD 605.23