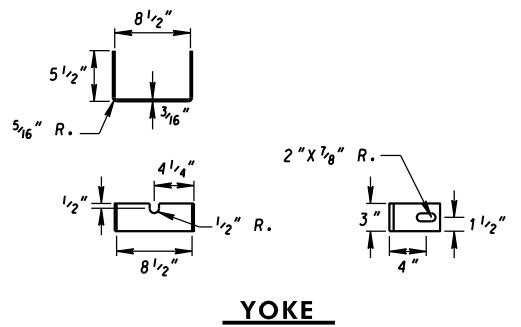
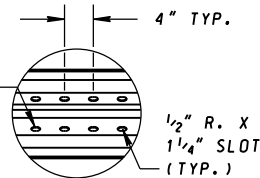


GROUND STRUT

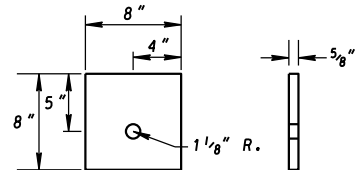


YOKE

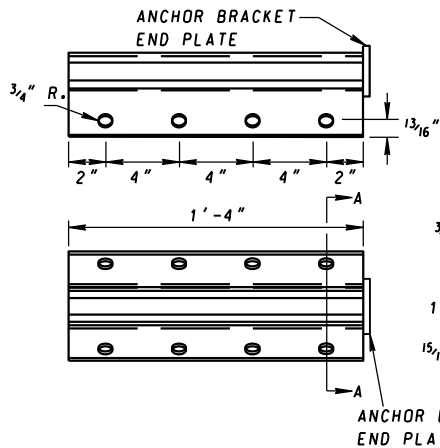
5/8" DIA. X 1 1/2" HEX HEAD BOLTS GRADE 5 AND 5/8" DIA. WASHERS TOTAL OF EIGHT (8)



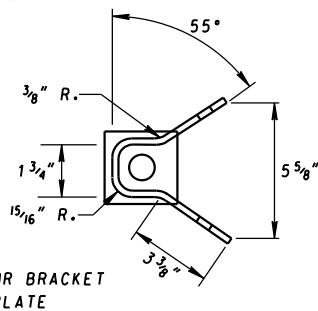
ANCHOR BRACKET SLOT



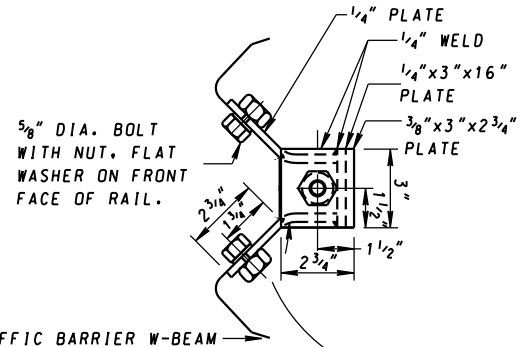
ANCHOR CABLE BEARING PLATE



ANCHOR BRACKET

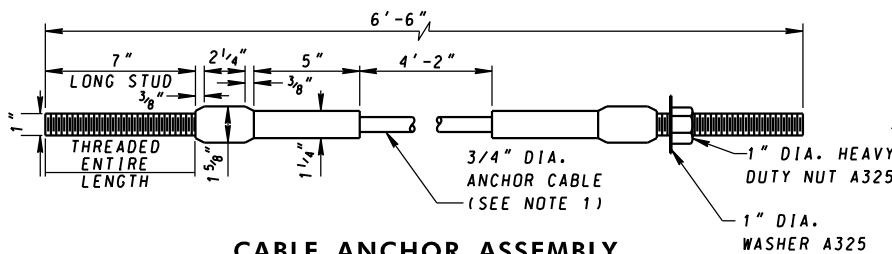


SECTION A-A

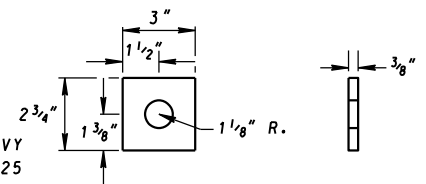


TRAFFIC BARRIER W-BEAM

EITHER FULL PENETRATION WELD OR BEND TO FIT



CABLE ANCHOR ASSEMBLY



ANCHOR BRACKET END PLATE

NOTES

1. BCT ANCHOR CABLE IS A 3/4" DIA. 6X19 IWRC IPS GALVANIZED WIRE ROPE. THE SWAGED FITTINGS AND STUD ARE REQUIRED. END FITTING SHALL BE MACHINED FROM HOT-ROLLED CARBON STEEL CONFORMING TO ASTM A576 GRADE 1035 AND GALVANIZED ACCORDING TO ASTM A123. THREADED STUD SHALL CONFORM TO ASTM A325 OR SAE GRADE 5. MINIMUM BREAKING STRENGTH OF WIRE ROPE IS 3,000 LB. WIRE ROPE IS TO BE TAUT.

SPECIFICATION 605	CATEGORY CODE ITEMS
APPROVED	<i>Cromarabala</i> DIRECTOR - OFFICE OF HIGHWAY DEVELOPMENT
APPROVAL SHA REVISIONS	APPROVAL FEDERAL HIGHWAY ADMINISTRATION
APPROVAL 11-10-99	APPROVAL 7-2-99
REVISED 4-17-06	REVISED 4-5-06
REVISED 1-9-20	REVISED 12-23-19
REVISED 3-16-22	REVISED 2-24-22

MDOT MARYLAND DEPARTMENT OF TRANSPORTATION
STATE HIGHWAY ADMINISTRATION

**STANDARDS FOR HIGHWAYS AND INCIDENTAL STRUCTURES
TRAFFIC BARRIER W-BEAM ONE-SIDED
DOWNSTREAM END TREATMENT (TYPE K)
DETAILS**

STANDARD NO. MD 605.10-01