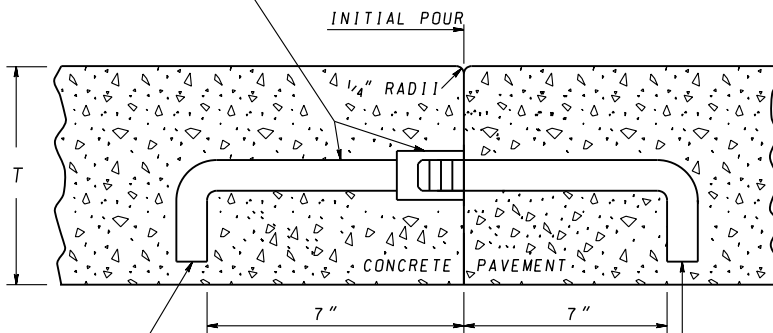


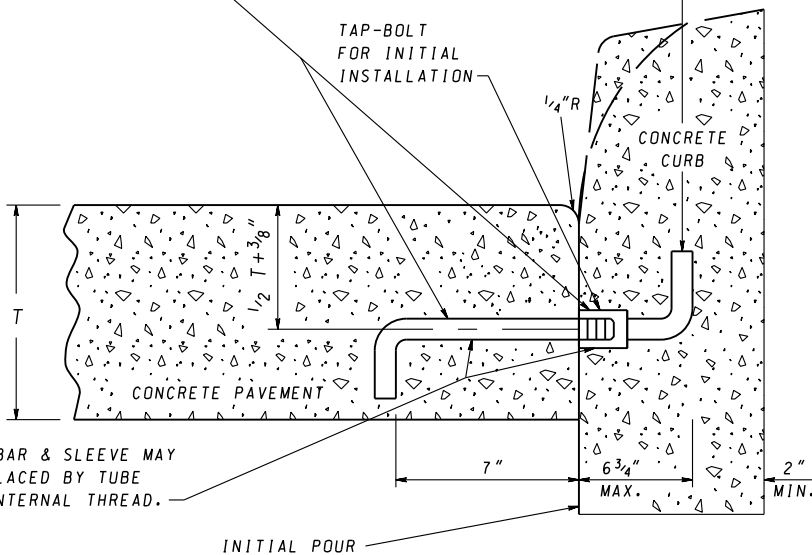
SOLID BAR & SLEEVE MAY BE REPLACED BY TUBE WITH INTERNAL THREAD.



LONGITUDINAL TIE DEVICE "J" BAR

NOTE: HOOK END OF BAR SHALL BE PLACED ALONG A DIAGONAL OF THE SQUARE CROSS SECTION.

NOTE: HOOK END OF BAR SHALL BE PLACED ALONG A DIAGONAL OF THE SQUARE CROSS SECTION.



SOLID BAR & SLEEVE MAY BE REPLACED BY TUBE WITH INTERNAL THREAD.

LONGITUDINAL TIE DEVICE - "J" BAR MODIFIED

T = PAVEMENT THICKNESS

FOR APPLICABLE NOTES REFER TO STANDARD 572.61-01

SPECIFICATION	CATEGORY CODE ITEMS
APPROVED	<i>[Signature]</i> DIRECTOR - OFFICE OF HIGHWAY DEVELOPMENT
	APPROVAL • SHA REVISIONS
	APPROVAL 6-15-64
	REVISED 2-25-16
	REVISED

Maryland Department of Transportation
STATE HIGHWAY ADMINISTRATION
 STANDARDS FOR HIGHWAYS AND INCIDENTAL STRUCTURES

CONCRETE PAVEMENT
LONGITUDINAL TIE DEVICES

STANDARD NO. MD 572.61