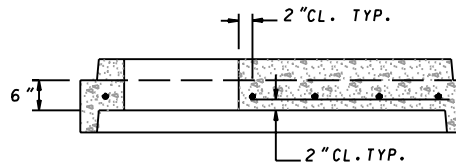


**PLAN**



**SECTION A-A  
DRIP STONE LANDING**

SEE STD. MD 384.15 FOR PRECAST COMBINATION FLATTOP REDUCER AND DRIP STONE LANDING FOR 60" TO 120" DIAMETER MANHOLES AND STD. MD 384.17 FOR PRECAST COMBINATION ECCENTRICAL CONE REDUCER AND DRIP STONE LANDING FOR 60" TO 72" DIAMETER MANHOLES. OTHERWISE USE 48" DIAMETER DRIP STONE LANDING ON THIS SHEET.

**METHOD OF PLACING DRIP STONE LANDINGS**

PRECAST MANHOLE DIAMETER	DRIP STONE DIMENSIONS		
	D	W	X
48"	4'-10"	8"	2'-5"
60"	6'-0"	8"	3'-7"
72"	7'-2"	8"	4'-9"
84"	8'-4"	8"	5'-11"
96"	9'-6"	9"	7'-0"
120"	11'-8"	10"	9'-1"

**NOTES**

1. THE DRIP STONE LANDING SHALL BE USED ONLY WHEN THERE ARE PIPES CONNECTED TO THE RISER UNITS.
2. CONCRETE SHALL BE MIX NO.6 (4500 PSI).
3. REINFORCEMENT SHALL MEET ASTM A 615 GRADE 60.
4. THE MANUFACTURER SHALL FORM MALE AND FEMALE ENDS OF JOINTS USING THEIR OWN DESIGN.
5. LIFT EYES SHALL BE PROVIDED FOR HANDLING.
6. COST FOR THE DRIP STONE LANDING IS INCIDENTAL TO THE COST OF THE MANHOLE.

SPECIFICATION	CATEGORY CODE ITEMS	
APPROVED	<i>Kirk G. McCall</i> DIRECTOR - OFFICE OF HIGHWAY DEVELOPMENT	
	APPROVAL • SHA REVISIONS	APPROVAL • FEDERAL HIGHWAY ADMINISTRATION
	APPROVAL 2-22-91	APPROVAL 1-2-91
	REVISED 10-1-01	REVISED
	REVISED	REVISED

**Maryland Department of Transportation  
STATE HIGHWAY ADMINISTRATION**  
STANDARDS FOR HIGHWAYS AND INCIDENTAL STRUCTURES  
**PRECAST DRIP STONE LANDING DETAILS  
FOR 48" TO 120" DIAMETER MANHOLES**

**STANDARD NO. MD 384.13**