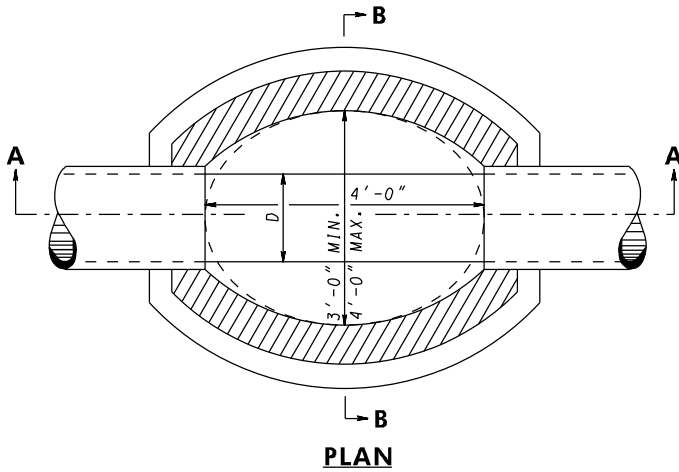


**GENERAL NOTES**

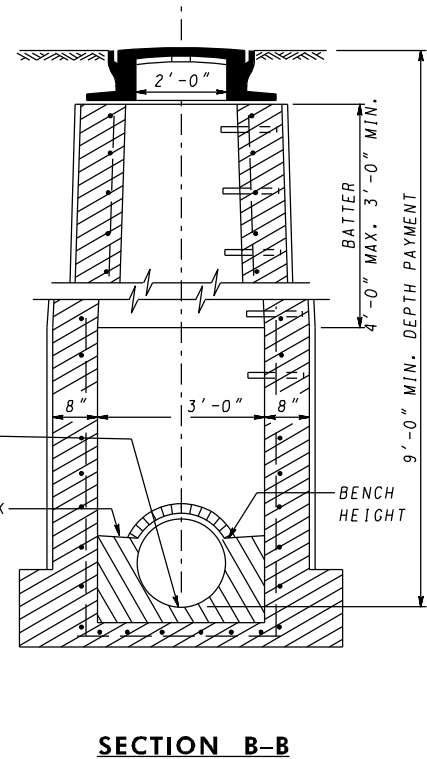
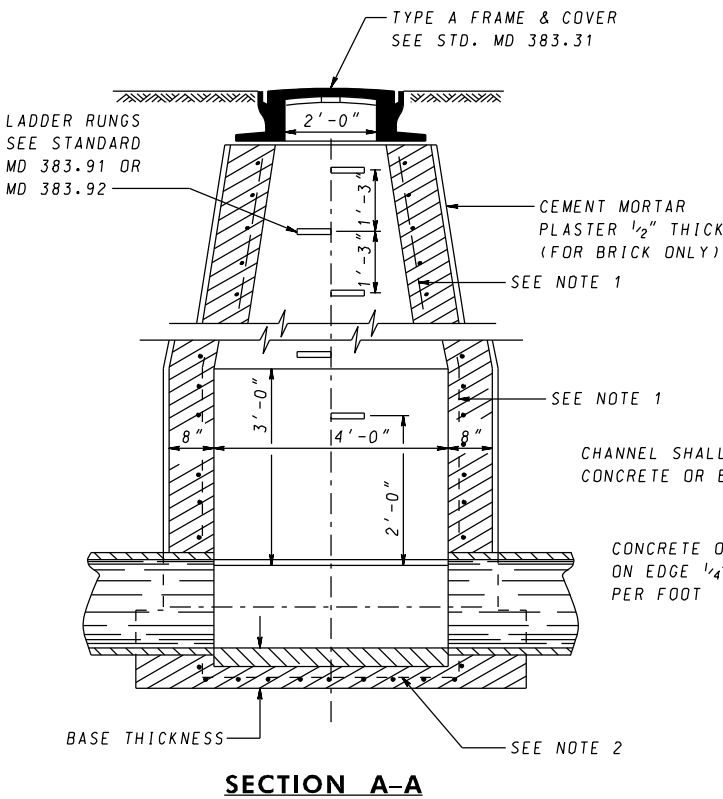
1. WALL REINFORCEMENT SHALL BE NO. 4 DEFORMED BARS @ 6" C/C, 2 WAYS, AND HAVE 3" COVER BELOW DEPTH OF 12'-0" AND 4" COVER TO DEPTH OF 24'-0".
2. BASE REINFORCEMENT SHALL BE NO. 4 DEFORMED BARS @ 6" C/C, 2 WAYS, AND HAVE 2" COVER FROM TOP OF BASE.
3. MANHOLE HAS BEEN DESIGNED FOR HS-25 LOADING, ACCORDING TO AASHTO LRFD BRIDGE DESIGN SPECIFICATIONS.
4. BRICK AND MORTAR MAY BE USED IN NON-TRAFFIC AREAS ONLY.



MANHOLE WALL THICKNESS  
 8" TO DEPTH OF 12'-0"  
 12" } BELOW DEPTH OF 12'-0"  
 TO DEPTH OF 24'-0"

MANHOLE BASE THICKNESS  
 8" WALL-USE 12" BASE  
 12" WALL-USE 15" BASE

BENCH HEIGHT ABOVE OUTGOING PIPE INVERT  
 STORM WATER 0.5 D  
 SANITARY 0.9 D



SPECIFICATION <b>305</b>	CATEGORY CODE ITEMS
APPROVED	DIRECTOR - OFFICE OF HIGHWAY DEVELOPMENT
	APPROVAL • SHA REVISIONS
	APPROVAL 2-7-51
	REVISED 10-1-01
	REVISED 10-7-14
	REVISED

**Maryland Department of Transportation**  
**STATE HIGHWAY ADMINISTRATION**  
 STANDARDS FOR HIGHWAYS AND INCIDENTAL STRUCTURES

**STANDARD MANHOLE**

**STANDARD NO. MD 383.01**

APPROVAL • FEDERAL HIGHWAY ADMINISTRATION
APPROVAL 3-25-56
REVISED 2-24-88
REVISED 9-29-14
REVISED