

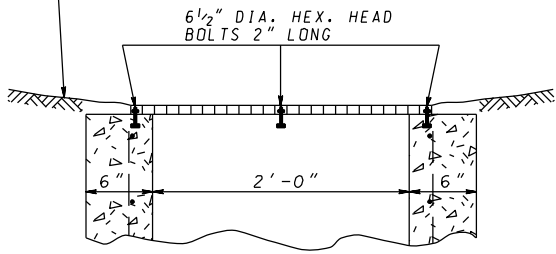
NOTES

1. GRATING TO BE GALVANIZED.
2. INLET TO BE CONSTRUCTED OF CONCRETE (MIX NO. 2) OR BRICK. WHEN INLET IS CONSTRUCTED OF CONCRETE ALL REINFORCING IS TO BE NO. 4 DEFORMED BARS 6" C/C.

NOTE EXPANSION ANCHORS MAY BE USED INSTEAD OF BOLTS.

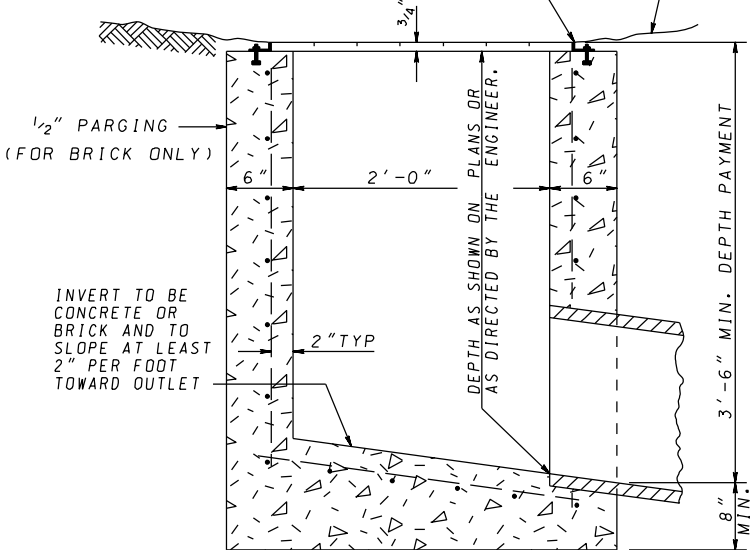
2-2"x1 1/4"x3/16"x2'-6" L (CENTERED ON GRATE)
 TRIM VERTICAL LEG OF ANGLE TO 3/4" IN HEIGHT
 WELD SECURELY TO GRATING AT EVERY 4TH BAR
 (WELDED AREAS TO BE TOUCHED UP WITH ZINC RICH PAINT AFTER WELDING.)

SLOPE GROUND TOWARD INLET



SECTION B-B

PIPE TYPE, SIZE,
 SLOPE & INVERT
 ELEVATION AS
 SHOWN ON THE PLANS



SECTION A-A

SPECIFICATION 305	CATEGORY CODE ITEMS
APPROVED	DIRECTOR - OFFICE OF HIGHWAY DEVELOPMENT
	APPROVAL • SHA REVISIONS
	APPROVAL • FEDERAL HIGHWAY ADMINISTRATION
	APPROVAL 8-7-72
	REVISD 10-1-01
	REVISD 10-7-14

**Maryland Department of Transportation
 STATE HIGHWAY ADMINISTRATION**
 STANDARDS FOR HIGHWAYS AND INCIDENTAL STRUCTURES

STANDARD YARD INLET

STANDARD NO. MD 381.01