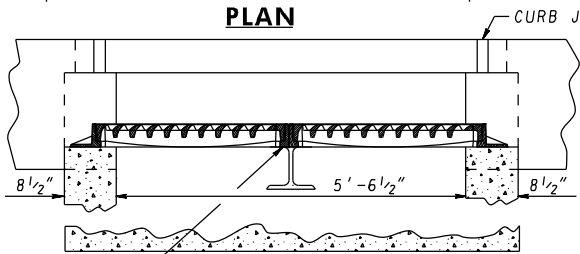


**METHOD OF ANCHORING SUPPORT BEAM
IF INLET IS CONSTRUCTED OF BRICK**
(THIS DETAIL TO BE USED FOR INLET REPAIR ONLY)

LEAVE 4"x4" OPENING
FOR SUBGRADE DRAINAGE
IF DIRECTED

STANDARD "S" COMB CAST IRON FRAME & GRATES
WITH CUT FLANGE SEE STANDARD MD 379.05-01

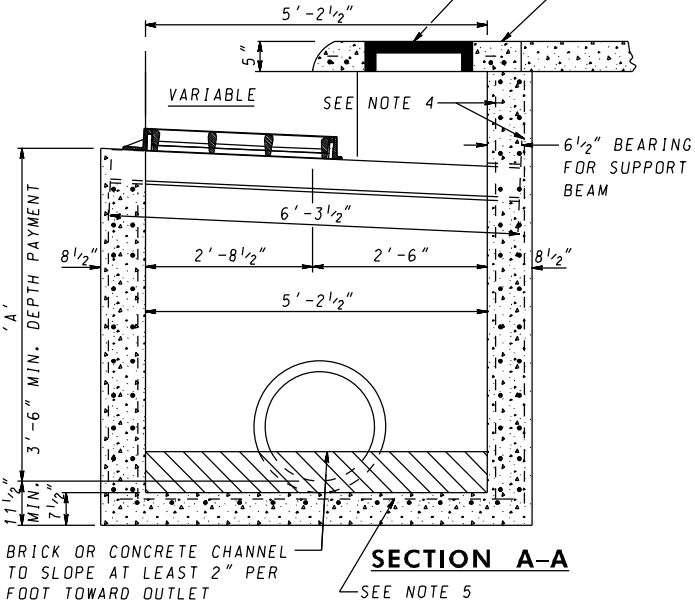


W8x31 (GALVANIZED) SUPPORT BEAM
STANDARD PRECAST CLASS "H" COMB. INLET HEAD (FOR DETAILS, SEE STANDARD MD-376.61)
STANDARD TYPE "D" MANHOLE FRAME & COVER SEE STANDARD MD-383.61

SEE STD MD 379.04
FOR THROUGH OPENING
DIMENSIONS

GENERAL NOTES

1. CONCRETE TO BE MIX NO. 2 (3,000 PSI).
2. SIZE, TYPE, AND DIRECTION OF INLET CONNECTION WILL VARY TO SUIT CONDITIONS.
3. SEE SHA LATEST SPECIFICATIONS FOR INLETS.
4. WHEN "A" IS LESS THAN 7'-0", WALL REINFORCEMENT SHALL BE ONE LAYER OF NO. 4 DEFORMED BARS @ 6" C/C, TWO WAYS, AND HAVE 4" COVER ON INSIDE. WHEN "A" IS GREATER THAN 7'-0" AND LESS THAN 15'-0", WALL REINFORCEMENT TO BE TWO LAYERS OF NO. 4 DEFORMED BARS @ 6" C/C, TWO WAYS, ON INSIDE AND OUTSIDE OF WALL WITH 2" COVER.
5. BASE REINFORCEMENT SHALL BE ONE LAYER OF NO. 4 DEFORMED BARS @ 6" C/C, TWO WAYS, WITH 2" COVER FROM TOP OF BASE.
6. PLACE 1/4" EXPANSION MATERIAL OF THE SAME TYPE APPROVED FOR PAYMENT IN BETWEEN THE FRAME AND ABUTTING RIGID PAVEMENT AND BETWEEN ENDS OF INLET CURB AND NORMAL CURB.
7. BRICK FOR MASONRY TO COMPLY WITH THE SHA SPECIFICATION.
8. FOR UNDEPRESSED INLETS USE NORMAL PAVEMENT SLOPE.
9. LADDER RUNGS SHALL BE IN ACCORDANCE WITH STD MD 383.91 AND MD 383.92 OR AS DIRECTED BY THE ENGINEER.
10. FROM THE CURB LINE/SIDEWALK, INLET HAS BEEN DESIGNED FOR HS-25 LOADING ACCORDING TO AASHTO LRFD BRIDGE DESIGN SPECIFICATIONS AND FOR A MAXIMUM DEPTH OF 15'-0".



SPECIFICATION 305	CATEGORY CODE ITEMS
APPROVED	DIRECTOR - OFFICE OF HIGHWAY DEVELOPMENT
	APPROVAL • SHA REVISIONS
	APPROVAL • FEDERAL HIGHWAY ADMINISTRATION
	APPROVAL 10-30-69
	APPROVAL 11-10-69
	APPROVAL 7-1-09
APPROVAL 10-7-14	
APPROVAL 7-26-10	
APPROVAL 9-29-14	
APPROVAL -	APPROVAL -

Maryland Department of Transportation
STATE HIGHWAY ADMINISTRATION
STANDARDS FOR HIGHWAYS AND INCIDENTAL STRUCTURES

STANDARD TYPE HS COMBINATION INLET

STANDARD NO. MD 380.01