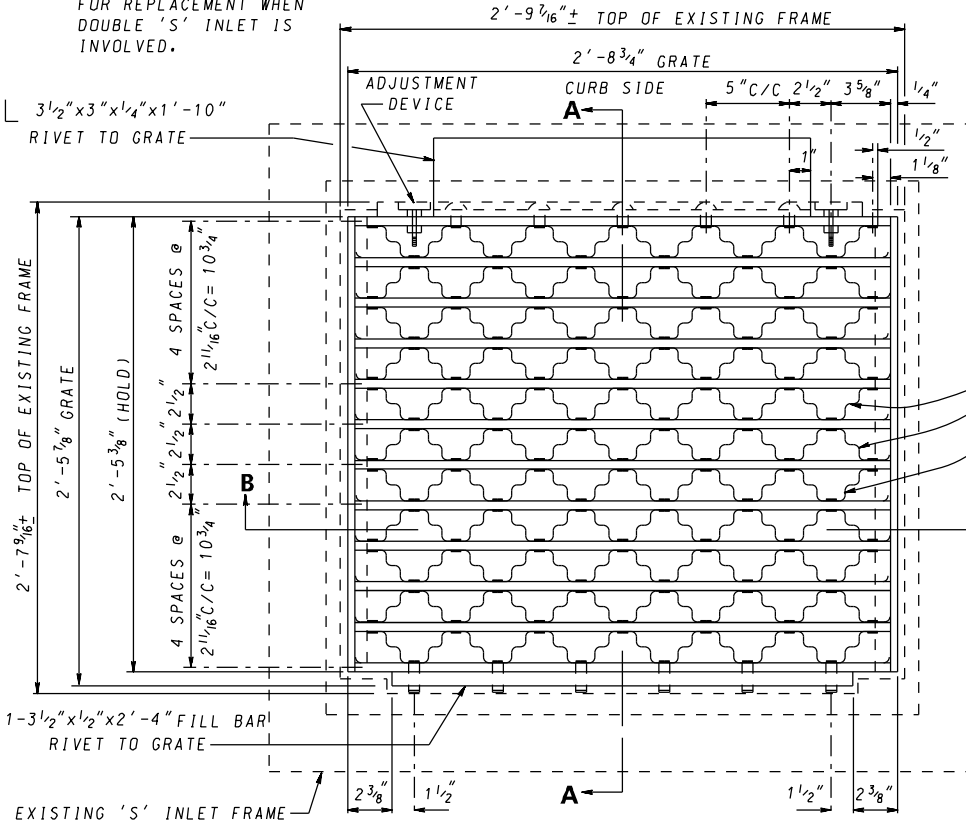


NOTE 2 GRATES ARE REQUIRED FOR REPLACEMENT WHEN DOUBLE 'S' INLET IS INVOLVED.

GENERAL NOTES

1. GRATES TO BE SQUARE FLAT & TRUE
2. STRUCTURAL STEEL SHALL BE ASTM DESIGNATION A-36.
3. GRATES TO BE GALVANIZED AFTER FABRICATION IN ACCORDANCE WITH ASTM DESIGNATION A-123.
4. SEE LATEST S.H.A. SPECIFICATIONS.
5. GRATE AND FRAME HAVE BEEN DESIGNED FOR HS-25 LOADING, ACCORDING TO AASHTO LRFD BRIDGE DESIGN SPECIFICATIONS.



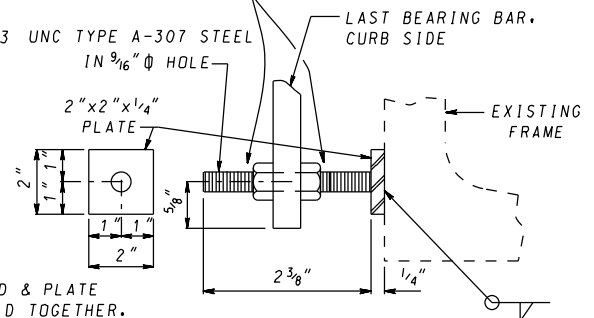
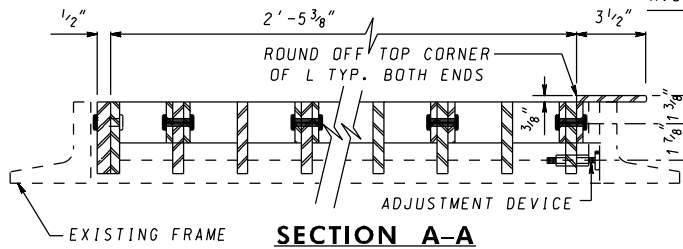
3-SPECIAL RETICULAR BARS

A "LOCKING DEVICE", TO BE DEVELOPED AND SUPPLIED BY THE CONTRACTOR, AND APPROVED BY THE S.H.A. ASSISTANT CHIEF ENGINEER-DESIGN FOR THE PURPOSE OF LOCKING THE GRATE IN-PLACE, IS REQUIRED PRIOR TO THE AWARD OF THE CONTRACT.

ANY DEVIATIONS FROM THE RETICULAR DESIGN AS SHOWN, MUST BE APPROVED BY THE S.H.A. ASSISTANT CHIEF ENGINEER-DESIGN.

PLAN

1/2-13 HEX THIN NUTS TYPE A-307 STEEL GALVANIZED AS PER A.S.T.M. A-153 & TAPPED OVERSIZE TO FIT 1/2" Ø GALVANIZED STUD

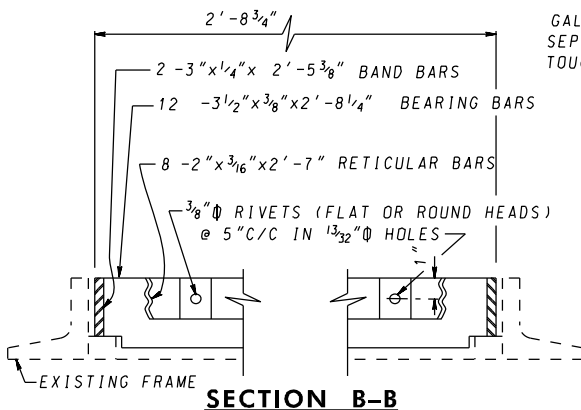


ADJUSTMENT DEVICE

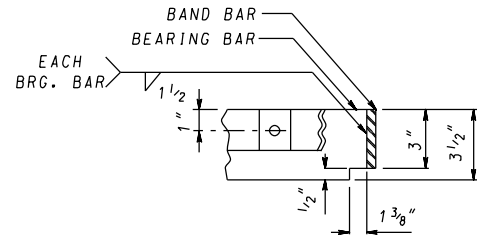
(TWO PER GRATE)

NOTE

GALV. THE STUD & PLATE SEPARATELY, WELD TOGETHER. TOUCH UP WITH ZINC RICH ZRC PAINT.



SECTION B-B



GRATING DETAIL

SPECIFICATION	CATEGORY CODE ITEMS
APPROVED	DIRECTOR - OFFICE OF HIGHWAY DEVELOPMENT
APPROVAL • SHA REVISIONS	APPROVAL • FEDERAL HIGHWAY ADMINISTRATION
APPROVAL 12-20-74	APPROVAL 1-14-75
REVISED 10-1-01	REVISED 2-8-83
REVISED 10-7-14	REVISED 9-29-14
REVISED	REVISED

Maryland Department of Transportation
STATE HIGHWAY ADMINISTRATION
 STANDARDS FOR HIGHWAYS AND INCIDENTAL STRUCTURES
STANDARD TYPE S INLET & COMBINATION
RETICULAR REPLACEMENT GRATE

STANDARD NO.

MD 379.08

