

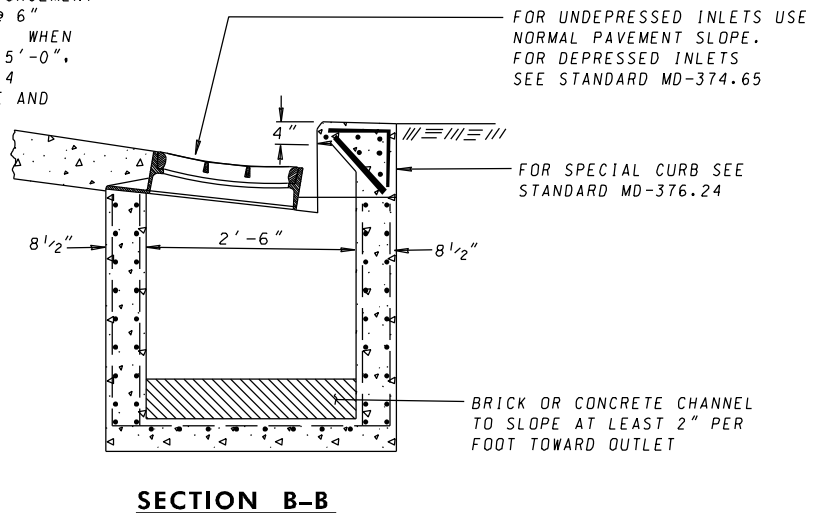
GENERAL NOTES

1. INLET SHALL BE CONSTRUCTED OF REINFORCED CONCRETE MIX NO. 2 (3,000 PSI).

2. WHEN DEPTH IS LESS THAN 7'-0", WALL REINFORCEMENT SHALL BE ONE LAYER OF NO. 4 DEFORMED BARS @ 6" C/C, TWO WAYS, AND HAVE 3" COVER ON INSIDE. WHEN DEPTH IS GREATER THAN 7'-0" AND LESS THAN 15'-0", WALL REINFORCEMENT TO BE TWO LAYERS OF NO. 4 DEFORMED BARS @ 6" C/C, TWO WAYS, ON INSIDE AND OUTSIDE OF WALL WITH 2" COVER.

3. BASE REINFORCEMENT SHALL BE ONE LAYER OF NO. 4 DEFORMED BARS @ 6" C/C, TWO WAYS, WITH 2" COVER FROM TOP OF BASE.

4. FROM CURBLINE, INLET HAS BEEN DESIGNED FOR HS-25 LOADING, ACCORDING TO AASHTO LRFD BRIDGE DESIGN SPECIFICATIONS AND FOR A MAXIMUM DEPTH OF 15'-0".



SPECIFICATION 305	CATEGORY CODE ITEMS
APPROVED	DIRECTOR - OFFICE OF HIGHWAY DEVELOPMENT
	APPROVAL • SHA REVISIONS
	APPROVAL • FEDERAL HIGHWAY ADMINISTRATION
	APPROVAL 12-15-87
	REVISSED 8-3-10
	REVISSED 10-7-14

Maryland Department of Transportation
STATE HIGHWAY ADMINISTRATION
 STANDARDS FOR HIGHWAYS AND INCIDENTAL STRUCTURES
STANDARD TYPE E COMBINATION INLET

STANDARD NO.

MD 376.21