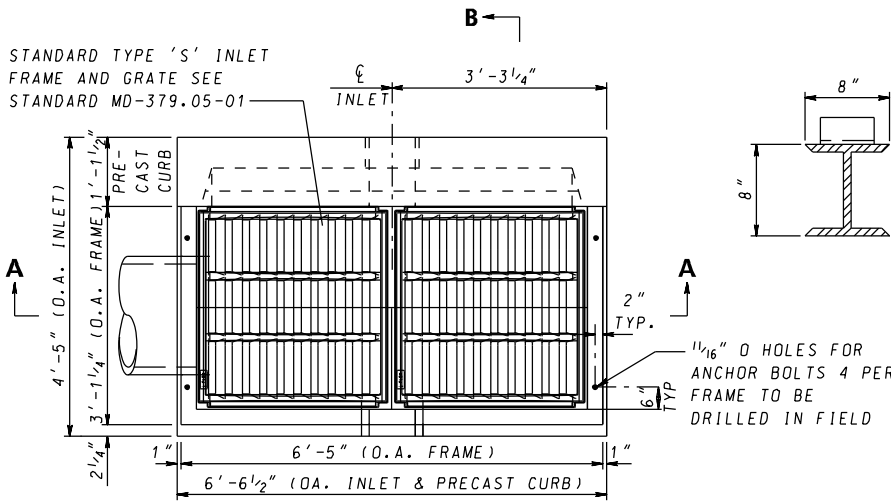


STANDARD TYPE 'S' INLET
FRAME AND GRATE SEE
STANDARD MD-379.05-01



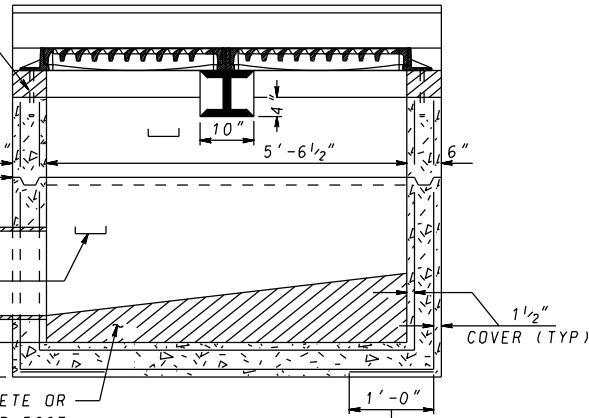
PLAN

5/8" Ø ANCHOR BOLT, 4 PER
FRAME (SEE DETAIL ON STD
MD 374.73 FRAME ANCHORAGE
DETAIL)

JOINT SEALER
AASHTO M 198
TYPE B (APPLIED
TO INSIDE
EDGE ONLY)

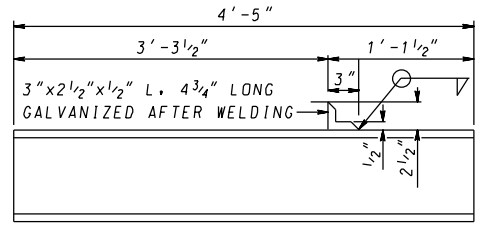
LADDER RUNGS
(IF REQUIRED)
SEE NOTE 7

INVERT TO BE CONCRETE OR
BRICK. SLOPE 2" PER FOOT
TOWARD OUTLET OR AS
DIRECTED (TO BE PROVIDED
IN FIELD)

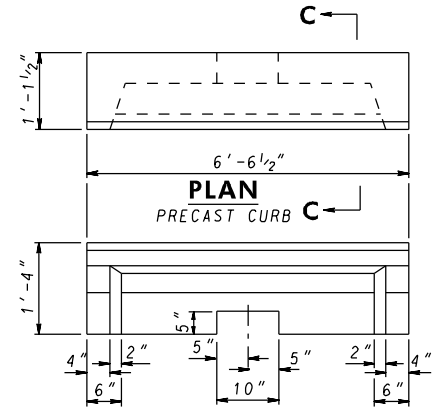


SECTION A-A

LAP SPLICE TO MAKE
REINFORCING CONTINUOUS
AROUND OUTSIDE CORNER.

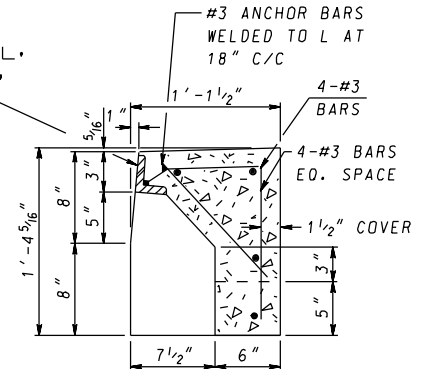


SUPPORT BEAM
WB X 31 (GALVANIZED)



FRONT ELEVATION
PRECAST CURB

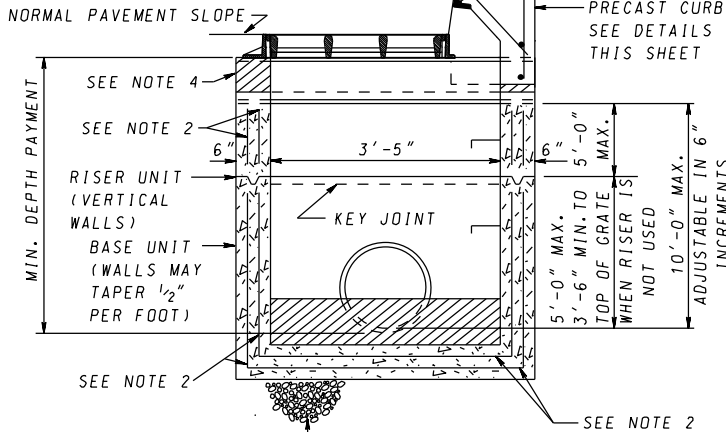
2 1/2" x 2 1/2" x 1/2" L,
6'-6 1/2" LONG,
GALVANIZED



SECTION C-C

GENERAL NOTES

1. CONCRETE TO BE MIX NO.6 (4500 PSI).
2. REINFORCING: WALLS - 2 LAYERS OF 4X4-W6.0 X W6.0 WELDED WIRE FABRIC; BASE - 2 LAYERS OF 4X4 - W10.5 X W10.5 WELDED WIRE FABRIC.
3. THREADED PLASTIC INSERTS TO BE PROVIDED FOR HANDLING.
4. GRADE AND SLOPE ADJUSTMENTS TO BE COMPLETED IN THE FIELD USING CONCRETE MIX NO.6.
5. PIPE OPENING TO BE PROVIDED AS REQUIRED. FOR SIZE, LOCATION AND INVERT ELEVATIONS REFER TO CONSTRUCTION PLANS.
6. PLACEMENT OF SUBGRADE DRAINAGE WILL BE AS DIRECTED BY THE ENGINEER OR AS NOTED ON THE CONSTRUCTION PLANS.
7. LADDER RUNGS SHALL BE IN ACCORDANCE WITH STANDARD MD 383.91 & MD 383.92 OR AS DIRECTED BY THE ENGINEER.
8. MINIMUM DEPTH PAYMENT PER "EACH" INCLUDES DEPTHS UP TO 3'-6". VERTICAL DEPTH PAYMENT PER LINEAR FOOT FOR DEPTHS IN EXCESS OF 3'-6".
9. FROM CURB LINE, INLET HAS BEEN DESIGNED FOR HS-25 LOADING, ACCORDING TO AASHTO LRFD BRIDGE DESIGN SPECIFICATIONS.



SECTION B-B

PROVIDED 6" MIN. BEDDING
OF NO. 57 AGGREGATE ON
FIRM SUBGRADE (BY OTHERS)

SPECIFICATION 305	CATEGORY CODE ITEMS
APPROVED	DIRECTOR - OFFICE OF HIGHWAY DEVELOPMENT
	APPROVAL • SHA REVISIONS
	APPROVAL • FEDERAL HIGHWAY ADMINISTRATION
	APPROVAL 4-15-87
	APPROVAL 6-23-87
	REVISD 8-3-10
REVISD 10-7-14	
REVISD -	REVISD 7-26-10
	REVISD 9-29-14
	REVISD -

Maryland Department of Transportation
STATE HIGHWAY ADMINISTRATION
STANDARDS FOR HIGHWAYS AND INCIDENTAL STRUCTURES
PRECAST STANDARD
TYPE S COMBINATION INLET
DOUBLE GRATE TANDEM
STANDARD NO. MD 374.71