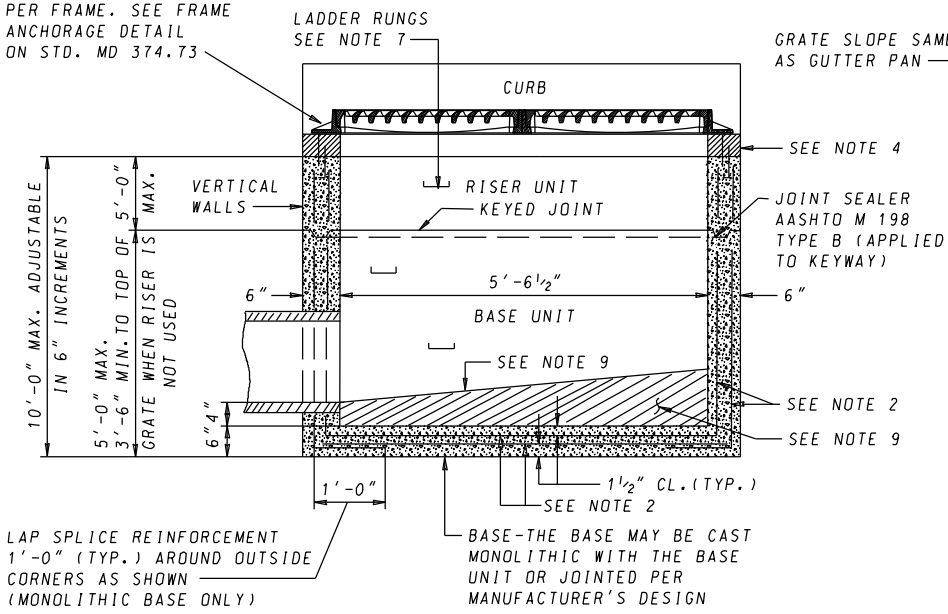


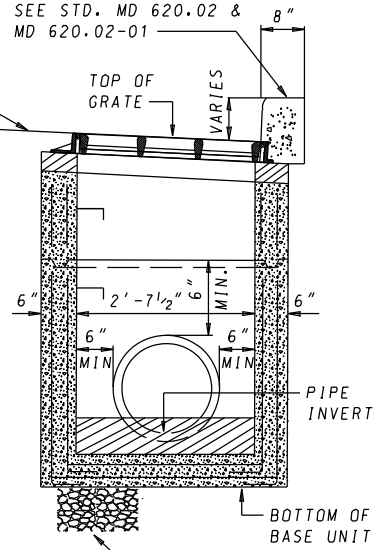
PLAN

5/8" Ø ANCHOR BOLT 4 PER FRAME. SEE FRAME ANCHORAGE DETAIL ON STD. MD 374.73



SECTION A-A

TYPE A, B OR C CURB PAID FOR SEPARATELY SEE STD. MD 620.02 & MD 620.02-01



SECTION B-B

NOTES

1. CONCRETE TO BE MIX NO. 6 (4500 PSI).
2. REINFORCING: WALLS - 2 LAYERS OF 4X4-W6.0 X W6.0 WELDED WIRE FABRIC; BASE - 2 LAYERS OF 4X4 - W7.0 X W7.0 WELDED WIRE FABRIC
3. THREADED PLASTIC INSERTS TO BE PROVIDED FOR HANDLING.
4. GRADE AND SLOPE ADJUSTMENTS MIN. 2", MAX. 9" SHALL BE COMPLETED IN THE FIELD USING CONCRETE MIX NO. 6.
5. PIPE OPENINGS TO BE PROVIDED AS REQUIRED. FOR SIZE, LOCATION AND INVERT ELEVATIONS REFER TO THE CONSTRUCTION PLANS.
6. PLACEMENT OF SUBGRADE DRAINAGE WILL BE AS DIRECTED BY THE ENGINEER OR AS NOTED ON THE CONSTRUCTION PLANS.
7. LADDER RUNGS SHALL BE IN ACCORDANCE WITH STANDARD MD 383.91 OR 383.92. RUNGS ARE INCIDENTAL TO THE COST OF THE INLET.
8. MINIMUM DEPTH PAYMENT PER EACH SHALL BE 3'-6" MEASURED FROM THE PIPE INVERT TO THE TOP OF THE GRATE AT ITS HIGHEST POINT. VERTICAL DEPTH PAYMENT PER LINEAR FOOT SHALL INCLUDE ALL DEPTHS IN EXCESS OF 3'-6" INCLUDING ALL APPURTENANCES.
9. CONCRETE OR BRICK INVERT TO BE PROVIDED IN THE FIELD AND SHALL SLOPE 2 IN./FT TOWARD OUTLET OR AS DIRECTED.
10. BASE WALLS UNIT MAY TAPER PER MANUFACTURER'S DESIGN.
11. FROM CURB LINE, INLET HAS BEEN DESIGNED FOR HS-25 LOADING, ACCORDING TO AASHTO LRFD BRIDGE DESIGN SPECIFICATIONS.

SPECIFICATION 305	CATEGORY CODE ITEMS
APPROVED	DIRECTOR - OFFICE OF HIGHWAY DEVELOPMENT
	APPROVAL • SHA REVISIONS
	APPROVAL • FEDERAL HIGHWAY ADMINISTRATION
	APPROVAL 2-22-91
	REVISIED 8-3-10
	REVISIED 10-7-14

Maryland Department of Transportation
STATE HIGHWAY ADMINISTRATION
 STANDARDS FOR HIGHWAYS AND INCIDENTAL STRUCTURES

**PRECAST STANDARD TYPE S INLET
 DOUBLE GRATE TANDEM**

STANDARD NO. MD 374.70