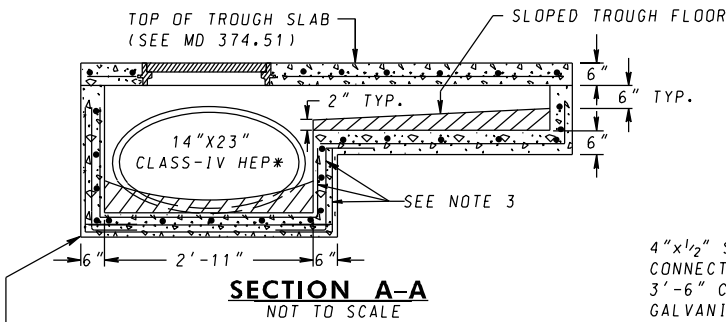
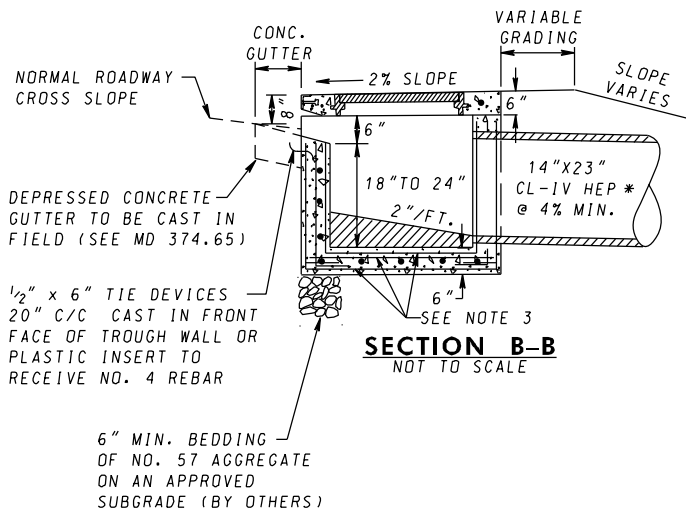
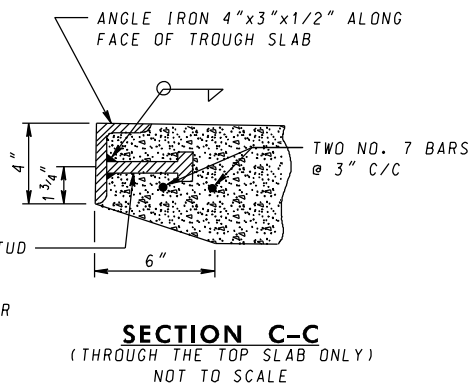


* EQUIVALENT PIPE(S) MAY BE SUBMITTED FOR APPROVAL. SUBMITTAL MUST INCLUDE HYDRAULIC COMPUTATIONS.



LAP SPLICE REINFORCEMENT 1'-0" (TYP) AROUND CORNERS AS SHOWN



GENERAL NOTES

1. SLOPED TROUGH FLOOR TO BE CAST IN THE FIELD AND USED ONLY WHEN ROAD GRADE IS 1.5% OR LESS. WHEN SLOPED TROUGH FLOOR IS USED, ROUGHEN PRECAST TROUGH FLOOR.
2. CONCRETE SHALL BE MIX NO. 6.
3. FOR CAST IN PLACE INLET, REINFORCEMENT SHALL BE NO. 4 BARS AT 6" C/C, TWO WAYS, PLACED AT THE CENTER OF BOTH WALLS AND BASE. FOR PRECAST INLET, REINFORCEMENT SHALL BE TWO LAYERS OF 4X4- W4.0 X W4.0 WELDED WIRE FABRIC WITH 1 1/2" COVER AT WALLS AND TWO LAYERS OF 4X4- W5.0 X W5.0 WELDED WIRE FABRIC WITH 1 1/2" COVER AT BASE.
4. FOR MANHOLE FRAME AND COVER SEE MD 383.61.
5. MINIMUM DEPTH PAYMENT SHALL BE 3'-6" MEASURED FROM THE BOTTOM OF THE BASE UNIT TO THE TOP OF THE TROUGH SLAB. VERTICAL DEPTH PAYMENT IN EXCESS OF 3'-6" IS NOT PERMITTED, USE OTHER STANDARDS IF ADDITIONAL VERTICAL DEPTH IS REQUIRED.
6. PIPE TO BE PAID FOR SEPARATELY
7. FROM CURB LINE/SIDEWALK, INLET HAS BEEN DESIGNED FOR HS-25 LOADING, ACCORDING TO AASHTO LRFD BRIDGE DESIGN SPECIFICATIONS.

SPECIFICATION 305	CATEGORY CODE ITEMS
APPROVED	DIRECTOR - OFFICE OF HIGHWAY DEVELOPMENT
	APPROVAL • SHA REVISIONS
	APPROVAL 12-3-97
	REVISD 10-7-14
	REVISD -
	REVISD -

Maryland Department of Transportation
STATE HIGHWAY ADMINISTRATION
 STANDARDS FOR HIGHWAYS AND INCIDENTAL STRUCTURES
PRECAST OR CAST IN PLACE
SHALLOW COG INLET
5' OR 10' TROUGH OPENING
STANDARD NO. MD 374.66