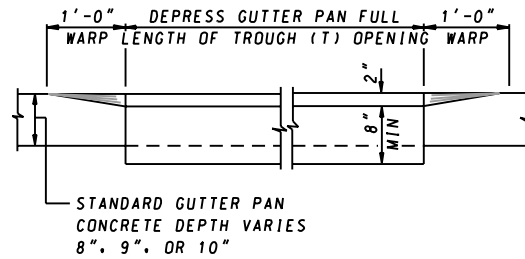
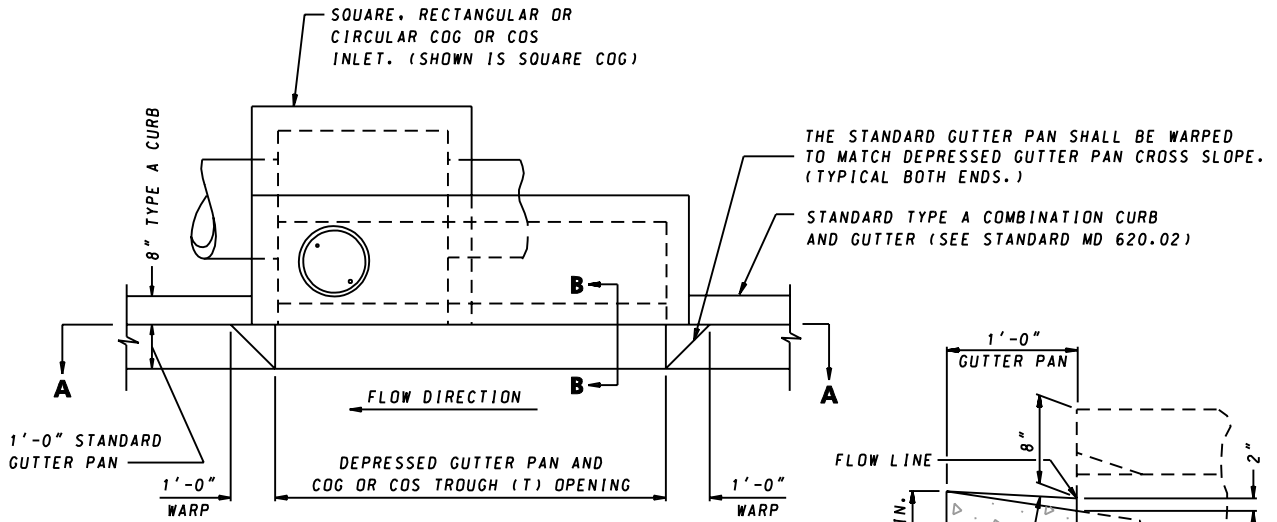


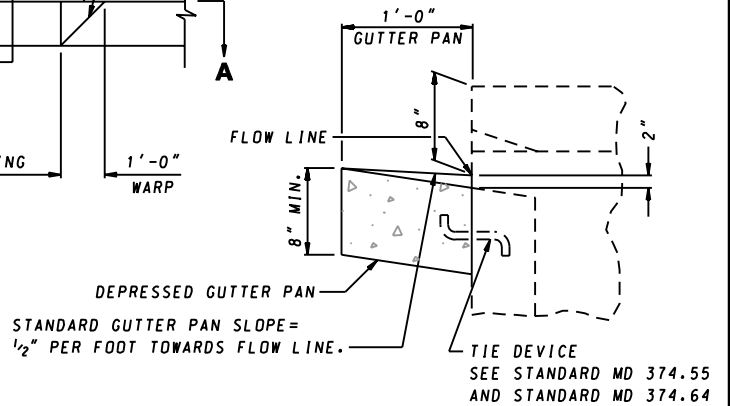
ISOMETRIC



SECTION A-A
(SHOWN LOOKING TOWARD ROADWAY)



PLAN




SECTION B-B

DETAILS FOR COG AND COS INLETS ARE SHOWN ON THE FOLLOWING STANDARDS

- MD 374.51 PRECAST OR CAST IN PLACE SQUARE AND RECTANGULAR COG INLETS 5', 10', 15', & 20'
- MD 374.55 PRECAST CONCRETE TROUGH INLET SLABS AND ADJUSTMENT COLLAR FOR COG AND COS INLETS
- MD 374.61 PRECAST OR CAST IN PLACE SQUARE AND RECTANGULAR COS INLETS 5', 10', 15', & 20'
- MD 374.62 PRECAST CIRCULAR COG INLETS 5', 10', 15', & 20'
- MD 374.63 PRECAST CIRCULAR COS INLETS 5', 10', 15', & 20'
- MD 374.64 ALTERNATE PRECAST TROUGHS FOR COG AND COS INLETS

NOTES

1. COST OF DEPRESSED CONCRETE GUTTER PAN IS INCIDENTAL TO THE COST OF THE INLET.
2. STANDARD TYPE A COMBINATION CURB AND GUTTER PAID FOR SEPARATELY.

SPECIFICATION	CATEGORY CODE ITEMS
APPROVED	<i>Kirk G. McCall</i> DIRECTOR - OFFICE OF HIGHWAY DEVELOPMENT
	APPROVAL • SHA REVISIONS
	APPROVAL 2-22-91
	REVISED 10-1-01
	REVISED
APPROVAL • FEDERAL HIGHWAY ADMINISTRATION	APPROVAL 1-2-91
REVISED	REVISED
REVISED	REVISED

Maryland Department of Transportation
STATE HIGHWAY ADMINISTRATION
STANDARDS FOR HIGHWAYS AND INCIDENTAL STRUCTURES

DEPRESSED CONCRETE GUTTER PAN FOR COG AND COS INLETS

STANDARD NO. MD 374.65