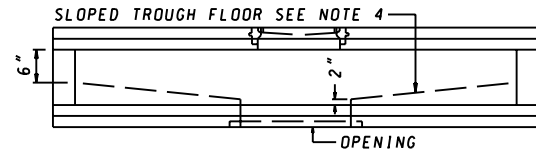
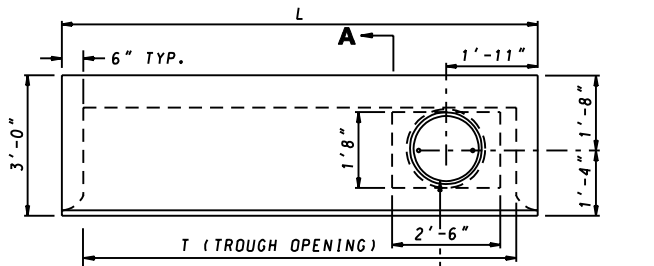


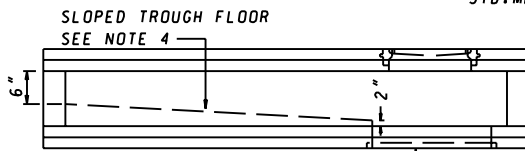
PLAN



ELEVATION
ALTERNATE COS TROUGH
(TROUGH FRONT NOT SHOWN)



PLAN

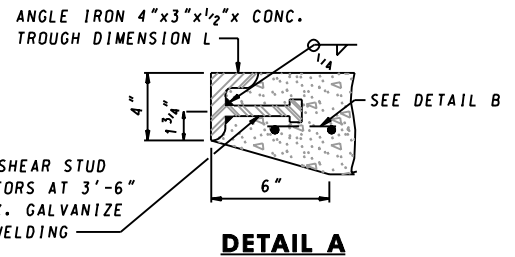


ELEVATION
ALTERNATE COG TROUGH
(TROUGH FRONT NOT SHOWN)

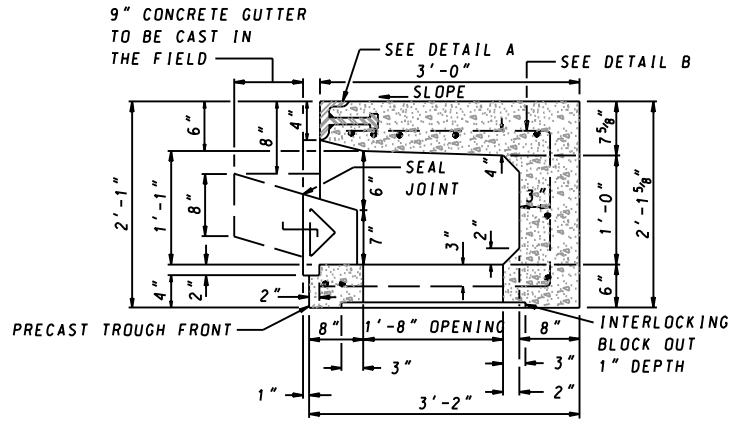
NOTES

1. CONCRETE TO BE MIX NO.6 (4500 PSI).
2. ASTM A 185 GRADE 65 STEEL.
3. THESE TROUGHS MAY BE USED AS ALTERNATES FOR THOSE SHOWN ON STANDARDS MD 374.51, MD 374.61, MD 374.62, & MD 374.63.
4. SLOPED TROUGH FLOOR TO BE CONSTRUCTED IN THE FIELD USING BRICK OR CONCRETE AND USED ONLY WHEN ROAD GRADE IS 1.5% OR LESS. WHEN SLOPED TROUGH FLOOR IS USED, ROUGHEN THE PRECAST TROUGH FLOOR.
5. ANGLE IRON AND SHEAR STUD CONNECTORS SHALL BE GALVANIZED AFTER WELDING IN ACCORDANCE WITH ASTM A 123.
6. WHEN USING THESE TROUGHS THE MINIMUM DEPTH PER EACH SHALL BE THE DEPTH SPECIFIED FOR THE RESPECTIVE INLET.

INLET TYPE	T	L
COG-5	5'-0"	6'-0"
COG-10	10'-0"	11'-0"
COG-15	15'-0"	16'-0"
COG-20	20'-0"	21'-0"
COS-5	5'-0"	6'-0"
COS-10	10'-0"	11'-0"
COS-15	15'-0"	16'-0"
COS-20	20'-0"	21'-0"

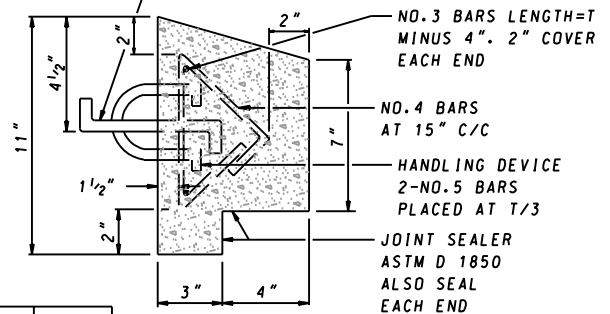


DETAIL A

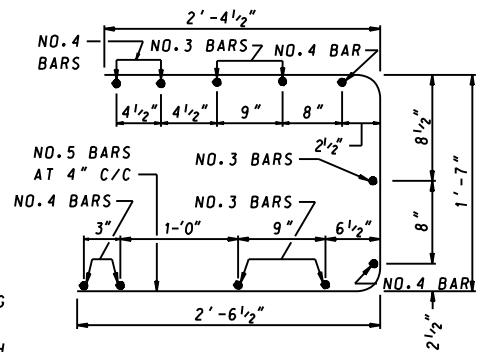


SECTION A-A
(TYPICAL COG & COS)

1/2"x6" TIE DEVICES AT 20" C/C



PRECAST TROUGH FRONT
(TYPICAL COG & COS LENGTH=T)



DETAIL B

SPECIFICATION 305	CATEGORY CODE ITEMS
-----------------------------	---------------------

APPROVED *Kirk G. McCall*
DIRECTOR - OFFICE OF HIGHWAY DEVELOPMENT



APPROVAL • SHA REVISIONS	APPROVAL • FEDERAL HIGHWAY ADMINISTRATION
APPROVAL 2-22-91	APPROVAL 1-2-91
REVISED 10-1-01	REVISED 9-4-91
REVISED	REVISED
REVISED	REVISED

Maryland Department of Transportation
STATE HIGHWAY ADMINISTRATION
STANDARDS FOR HIGHWAYS AND INCIDENTAL STRUCTURES

ALTERNATE PRECAST TROUGHS FOR COG & COS INLETS

STANDARD NO. MD 374.64