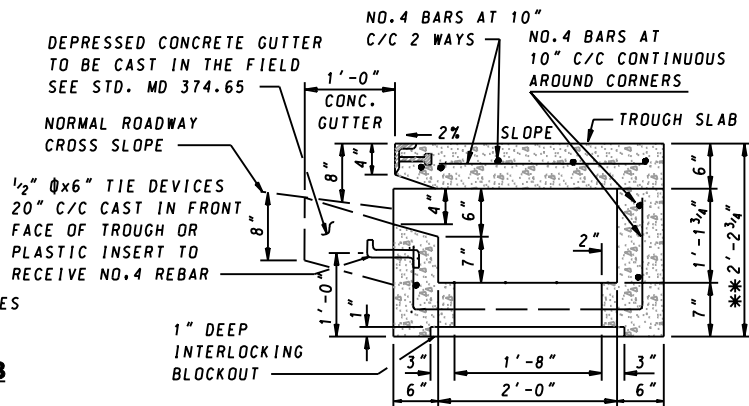
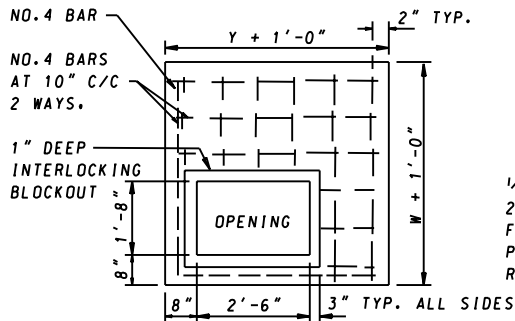


PRECAST CONCRETE INLET SLAB FOR CIRCULAR COG & COS INLETS

SECTION D-D
SEE STDS. MD 374.51, MD 374.61, MD 374.62 OR MD 374.63

* THIS DIMENSION FOR THE 96" AND THE 108" DIAMETER INLETS SHALL BE THE SAME AS THE WALL THICKNESS
SEE STD. MD 374.62 OR MD 374.63.

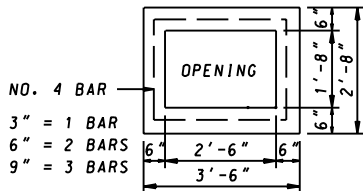


PRECAST CONCRETE INLET SLAB FOR SQUARE & RECTANGULAR COG & COS INLETS

SECTION C-C
SEE STDS. MD 374.51, MD 374.61, MD 374.62 OR MD 374.63

(6" THICK)
SEE STD. MD 374.51 OR 375.61

** HEIGHT OF THE BACK WALL IS 3/4" HIGHER THAN THE FRONT WALL DUE TO 2% SLOPE ON THE TOP TROUGH SLAB.



PRECAST CONCRETE ADJUSTMENT COLLAR FOR SQUARE, RECTANGULAR AND CIRCULAR INLETS

DETAILS FOR COG & COS INLETS ARE SHOWN ON THE FOLLOWING STANDARDS

- MD 374.51 PRECAST OR CAST IN PLACE SQUARE & RECTANGULAR COG INLETS 5', 10', 15', & 20'
- MD 374.61 PRECAST OR CAST IN PLACE SQUARE & RECTANGULAR COS INLETS 5', 10', 15', & 20'
- MD 374.62 PRECAST CIRCULAR COG INLETS 5', 10', 15', & 20'
- MD 374.63 PRECAST CIRCULAR COS INLETS 5', 10', 15', & 20'
- MD 374.64 ALTERNATE PRECAST TROUGHS FOR COG AND COS INLETS
- MD 374.65 DEPRESSED GUTTER PAN FOR COG & COS INLETS

(CAST IN 3", 6", & 9" THICKNESS)
SEE STD. MD 374.51 OR MD 374.61

NOTES

1. CONCRETE SHALL BE MIX NO. 6 (4500 PSI).
2. ANGLE IRON AND SHEAR STUD CONNECTORS SHALL BE GALVANIZED AFTER WELDING IN ACCORDANCE WITH ASTM A 123.

| | |
|---|---|
| SPECIFICATION 305 | CATEGORY CODE ITEMS |
| APPROVED <i>Kirk G. McCall</i> DIRECTOR - OFFICE OF HIGHWAY DEVELOPMENT | |
| | APPROVAL • SHA REVISIONS |
| | APPROVAL • FEDERAL HIGHWAY ADMINISTRATION |
| | APPROVAL 2-22-91 |
| | APPROVAL 1-2-91 |
| | REVISION 10-1-01 |
| REVISION | REVISION |
| REVISION | REVISION |

Maryland Department of Transportation
STATE HIGHWAY ADMINISTRATION
STANDARDS FOR HIGHWAYS AND INCIDENTAL STRUCTURES
PRECAST CONCRETE
INLET SLABS AND ADJUSTMENT COLLARS
FOR COG AND COS INLETS
STANDARD NO. MD 374.55