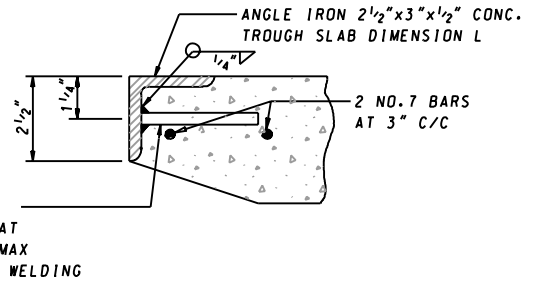


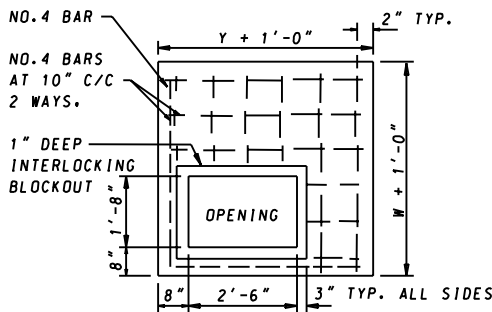
**PRECAST CONCRETE INLET SLAB
FOR CIRCULAR COG & COS INLETS**

* THIS DIMENSION FOR THE 96" AND THE 108" DIAMETER INLETS SHALL BE THE SAME AS THE WALL THICKNESS
SEE STD. MD 374.62 OR MD 374.63.



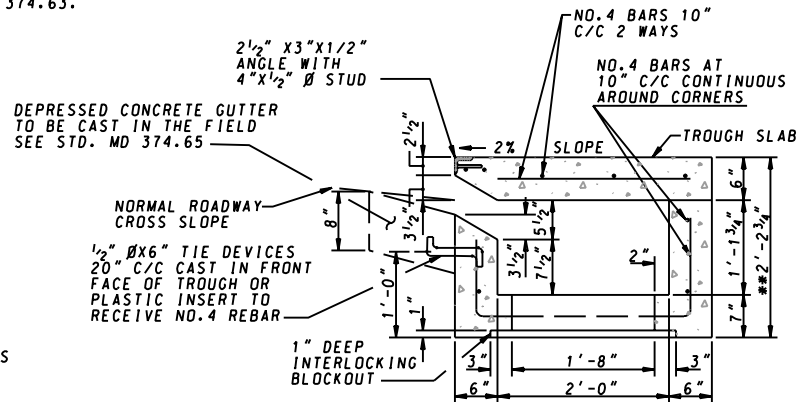
SECTION D-D

SEE STDS. MD 374.51, MD 374.61,
MD 374.62 OR MD 374.63



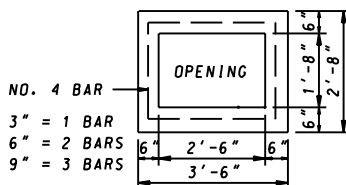
**PRECAST CONCRETE INLET SLAB
FOR SQUARE & RECTANGULAR
COG & COS INLETS
(6" THICK)**

SEE STD. MD 374.51 OR 375.61



SECTION C-C

SEE STDS. MD 374.51, MD 374.61,
MD 374.62 OR MD 374.63



**PRECAST CONCRETE
ADJUSTMENT COLLAR
FOR SQUARE, RECTANGULAR
AND CIRCULAR INLETS
(CAST IN 3", 6", & 9" THICKNESS)**

SEE STD. MD 374.51 OR MD 374.61

DETAILS FOR COG & COS INLETS ARE SHOWN ON THE FOLLOWING STANDARDS

- MD 374.51 PRECAST OR CAST IN PLACE SQUARE & RECTANGULAR COG INLETS 5', 10', 15', & 20'
- MD 374.61 PRECAST OR CAST IN PLACE SQUARE & RECTANGULAR COS INLETS 5', 10', 15', & 20'
- MD 374.62 PRECAST OR CAST IN PLACE CIRCULAR COG INLETS 5', 10', 15', & 20'
- MD 374.63 PRECAST OR CAST IN PLACE CIRCULAR COS INLETS 5', 10', 15', & 20'
- MD 374.64 ALTERNATE PRECAST TROUGHS FOR COG AND COS INLETS
- MD 374.65 DEPRESSED CONCRETE GUTTER PAN FOR COG & COS INLETS

** HEIGHT OF THE BACK WALL IS 3/4" HIGHER THAN THE FRONT WALL DUE TO 2% SLOPE ON THE TOP TROUGH SLAB.

NOTES

1. CONCRETE SHALL BE MIX NO.6 (4500 PSI).
2. ANGLE IRON AND SHEAR STUD CONNECTORS SHALL BE GALVANIZED AFTER WELDING IN ACCORDANCE WITH ASTM A 123.

SPECIFICATION 305	CATEGORY CODE ITEMS
APPROVED <i>Kirk G. McCall</i> DIRECTOR - OFFICE OF HIGHWAY DEVELOPMENT	
	APPROVAL • SHA REVISIONS
	APPROVAL • FEDERAL HIGHWAY ADMINISTRATION
	APPROVAL 3-25-03
	APPROVAL 5-5-03
REVISION	REVISION
REVISION	REVISION
REVISION	REVISION

**Maryland Department of Transportation
STATE HIGHWAY ADMINISTRATION**
STANDARDS FOR HIGHWAYS AND INCIDENTAL STRUCTURES
**PRECAST CONCRETE
INLET SLABS AND ADJUSTMENT COLLARS FOR
COG/COS INLETS TO ACCOMODATE 6" CURB**

STANDARD NO. MD 374.55-01