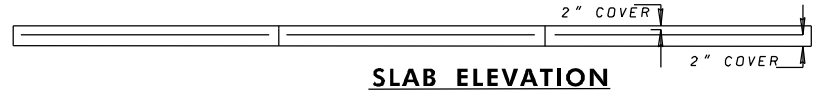
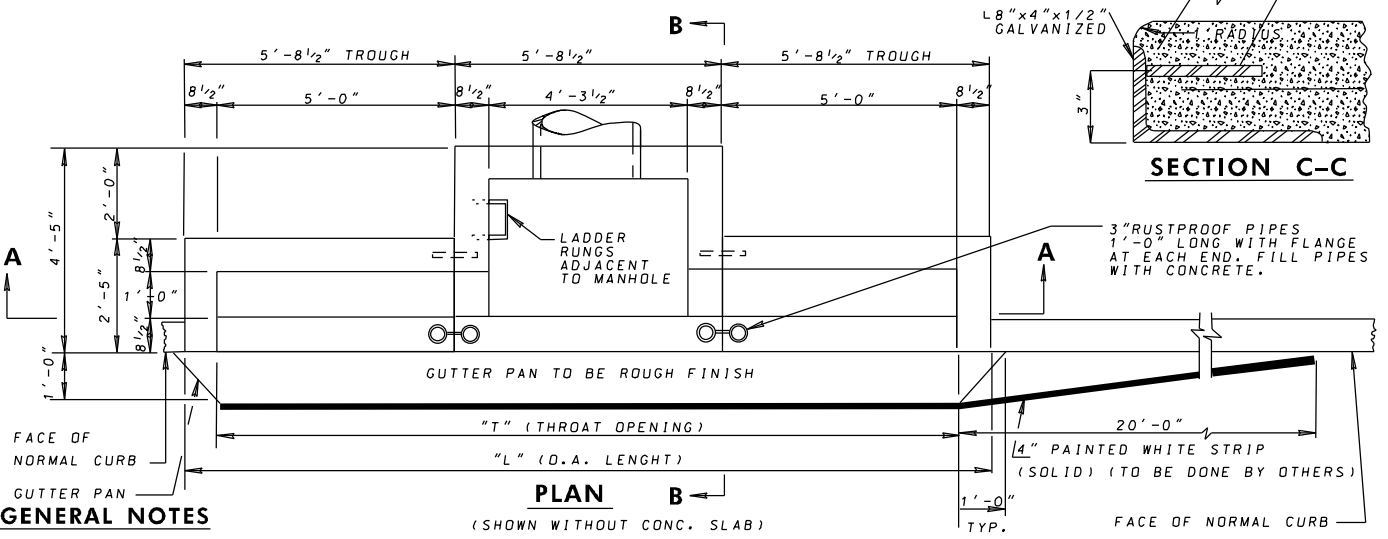


STANDARD TYPE 'D' FRAME & COVER SEE STANDARD MD-383.61

ALL REINFORCEMENT TO BE #4 DIAMETER DEFORMED BARS @ 6" C/C 2 WAYS 2" COVER EXCEPT AS NOTED.



5" x 1/2" ANCHOR BOLTS, SPACED @ 3'-6" MAX. GALVANIZED AFTER WELDING



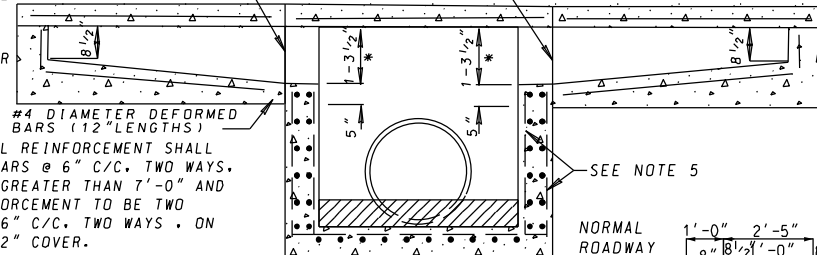
SECTION C-C

3" RUSTPROOF PIPES 1'-0" LONG WITH FLANGE AT EACH END. FILL PIPES WITH CONCRETE.

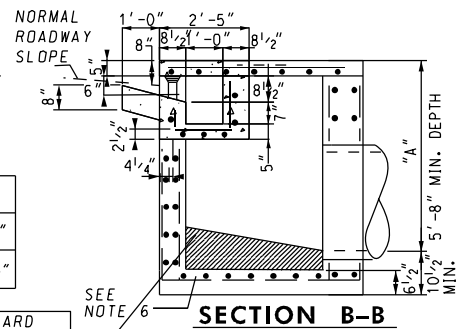
GENERAL NOTES

1. CONCRETE TO BE MIX NO. 2 (3,000 PSI).
2. SIZE, TYPE, AND DIRECTION OF INLET CONNECTION WILL VARY TO SUIT CONDITIONS.
3. SEE SHA LATEST SPECIFICATIONS FOR INLETS.
4. CURB OPENING SHOULD NOT ENCRoACH ON CROSSWALK AREAS
5. WHEN "A" IS LESS THAN 7'-0", WALL REINFORCEMENT SHALL BE ONE LAYER OF NO. 4 DEFORMED BARS @ 6" C/C, TWO WAYS, AND HAVE 3" COVER. WHEN "A" IS GREATER THAN 7'-0" AND LESS THAN THE 15'-0", WALL REINFORCEMENT TO BE TWO LAYERS OF NO. 4 DEFORMED BARS @ 6" C/C, TWO WAYS, ON INSIDE AND OUTSIDE OF WALL WITH 2" COVER.
6. BASE REINFORCEMENT SHALL BE ONE LAYER OF NO. 4 DEFORMED BARS @ 6" C/C, TWO WAYS, WITH 2" COVER FROM TOP OF BASE.
7. PLACE EXPANSION MATERIAL (SAME TYPE APPROVED FOR PAYMENT) AS INDICATED
8. ANGLES AND ANCHOR BOLTS TO BE GALVANIZED IN ACCORDANCE WITH ASTM A123 AFTER WELDING
9. INLET DEPTH MUST BE INCREASED WHEN PIPES LARGER THAN 18" AND USED UNDER THE TROUGH SECTION
10. LADDER RUNGS SHALL BE IN ACCORDANCE WITH STD MD 383.91 AND MD 383.92 OR AS DIRECTED BY THE ENGINEER.
11. FROM THE CURB LINE, INLET HAS BEEN DESIGNED FOR HS-25 LOADING ACCORDING TO AASHTO LRFD BRIDGE DESIGN SPECIFICATIONS FOR A MAXIMUM DEPTH OF 15'-0"

JOINT FILLER SHALL BE A CORK MATERIAL MEETING REQUIREMENTS OF AASHTO M-153 TYPE II



	INLET	"T"	"L"
COS - 5		4'-3 1/2"	5'-8 1/2"
COS - 15		15'-8 1/2"	17'-1 1/2"



THIS STANDARD TO BE USED WITH TYPE A CURB ONLY

INVERT TO SLOPE 2" PER FOOT TOWARD OUTLET OR AS DIRECTED.

* THIS DIMENSION TO BE MAINTAINED FOR ALL STANDARD COS INLETS.

SPECIFICATION 305	CATEGORY CODE ITEMS
APPROVED	DIRECTOR - OFFICE OF HIGHWAY DEVELOPMENT
	APPROVAL • SHA REVISIONS
	APPROVAL • FEDERAL HIGHWAY ADMINISTRATION
	APPROVAL 2-27-81
	APPROVAL 6-4-81
	REVISD 11-18-04
REVISD 10-7-14	
REVISD 9-29-14	
REVISD	REVISD

Maryland Department of Transportation
STATE HIGHWAY ADMINISTRATION
 STANDARDS FOR HIGHWAYS AND INCIDENTAL STRUCTURES

STANDARD C O S INLETS
5' & 15'

STANDARD NO. MD 374.41