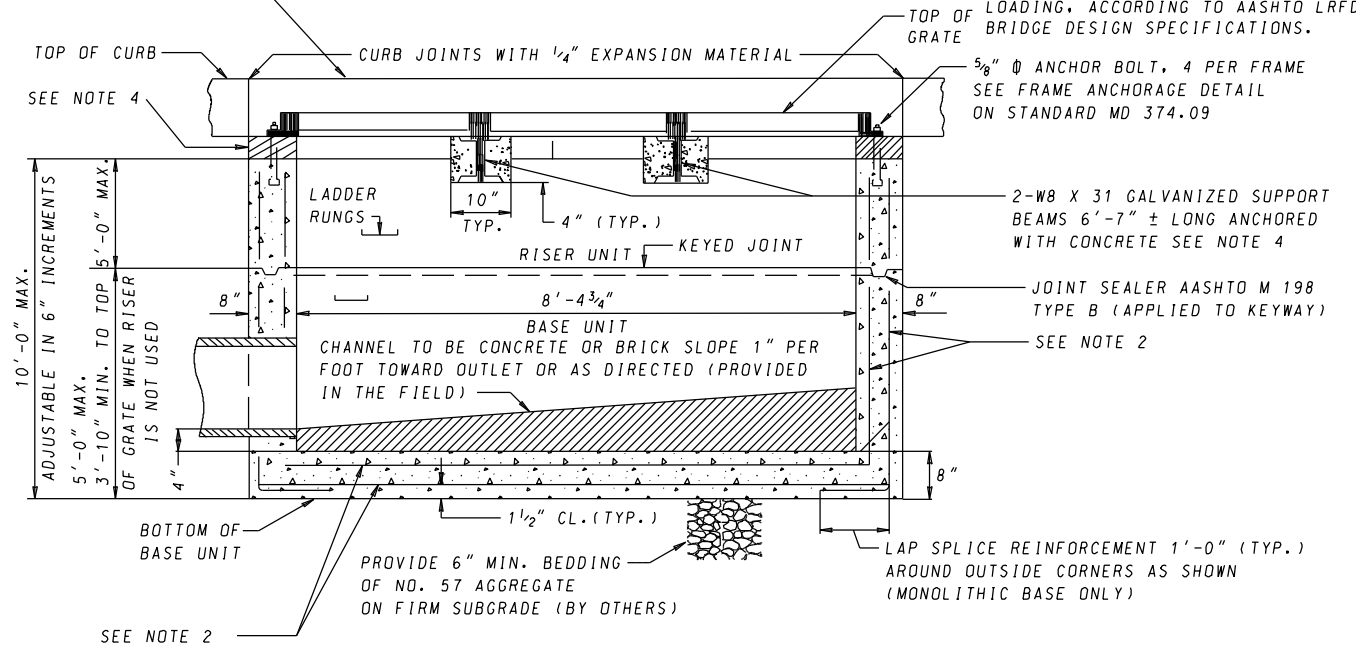


PLAN

FOR SECTION B-B SEE
STD. MD 374.27-01

SEE STD. MD
374.27-01 FOR DETAILS



SECTION A-A

NOTES

1. CONCRETE TO BE MIX NO. 6 (4500 PSI).
2. REINFORCING: WALLS - 2 LAYERS OF 4X4-W8.5 X W8.5 WELDED WIRE FABRIC; BASE - 2 LAYERS OF 4X4 - W11.0 X W11.0 WELDED WIRE FABRIC.
3. THREADED PLASTIC INSERTS TO BE PROVIDED FOR HANDLING.
4. GRADE AND SLOPE ADJUSTMENTS AND SUPPORT BEAM ANCHORAGES SHALL BE COMPLETED IN THE FIELD USING CONCRETE MIX NO.6 GRADE AND SLOPE ADJUSTMENTS SHALL BE MIN. 2", MAX 9".
5. PIPE OPENINGS SHALL BE PROVIDED AS REQUIRED. FOR SIZE, LOCATION AND INVERT ELEVATIONS REFER TO THE CONSTRUCTION PLANS.
6. PLACEMENT OF SUBGRADE DRAINAGE WILL BE AS DIRECTED BY THE ENGINEER OR AS NOTED ON THE CONSTRUCTION PLANS.
7. LADDER RUNGS SHALL BE IN ACCORDANCE WITH STDS. MD 383.91 OR MD 383.92. RUNGS ARE INCIDENTAL TO THE COST OF THE INLET.
8. MINIMUM DEPTH PAYMENT PER EACH SHALL BE 3'-10" MEASURED FROM THE PIPE INVERT TO THE TOP OF THE GRATE AT ITS HIGHEST POINT. VERTICAL DEPTH PAYMENT PER LINEAR FOOT SHALL INCLUDE ALL DEPTHS IN EXCESS OF 3'-10" INCLUDING ALL APPURTENANCES.
9. BASE UNIT WALLS MAY TAPER PER MANUFACTURER'S DESIGN.
10. FROM CURB LINE/SIDEWALK, INLET HAS BEEN DESIGNED FOR HS-25 LOADING, ACCORDING TO AASHTO LRFD BRIDGE DESIGN SPECIFICATIONS.

SPECIFICATION 305	CATEGORY CODE ITEMS	
APPROVED	DIRECTOR - OFFICE OF HIGHWAY DEVELOPMENT	
	APPROVAL • SHA REVISIONS	APPROVAL • FEDERAL HIGHWAY ADMINISTRATION
	APPROVAL 2-22-91	APPROVAL 1-2-91
	REVISED 10-7-14	REVISED 9-29-14
	REVISED	REVISED
	REVISED	REVISED

Maryland Department of Transportation
STATE HIGHWAY ADMINISTRATION
 STANDARDS FOR HIGHWAYS AND INCIDENTAL STRUCTURES

PRECAST TRIPLE WRM INLET

STANDARD NO. MD 374.27