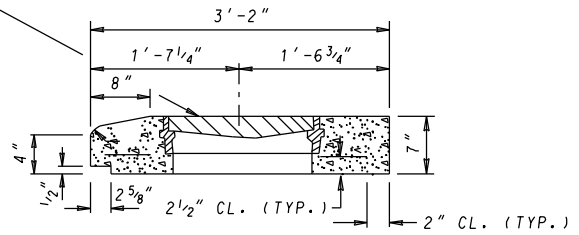


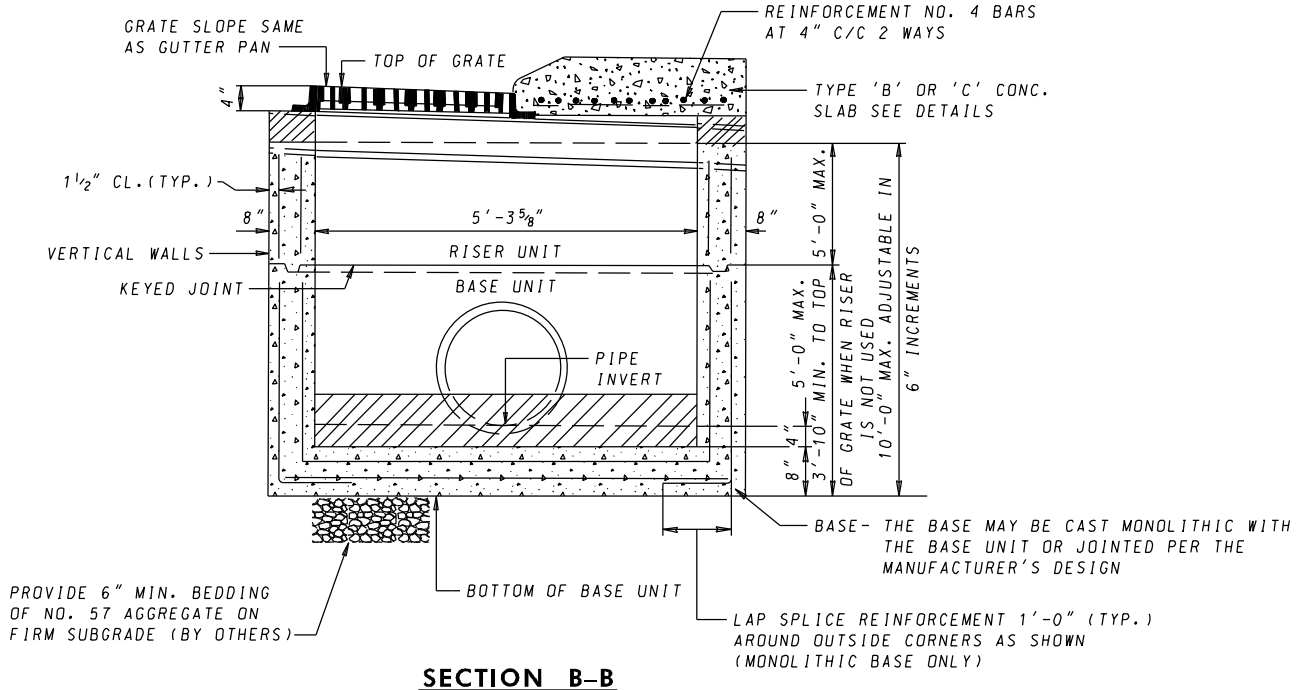
TYPE B PRECAST CONCRETE SLAB
(CONC. MIX NO. 2)



TYPE C PRECAST CONCRETE SLAB
(CONC. MIX NO. 2)

NOTE

TYPE 'B' SLAB SHALL BE USED WITH STD. TYPE 'B' CONC CURB
TYPE 'C' SLAB SHALL BE USED WITH STD. TYPE 'C' CONC CURB
FOR STANDARD CURB DETAILS SEE STD. MD 620.02.



SECTION B-B

SPECIFICATION 305	CATEGORY CODE ITEMS
APPROVED	DIRECTOR - OFFICE OF HIGHWAY DEVELOPMENT
	APPROVAL • SHA REVISIONS
	APPROVAL 2-22-91
	REVISED 10-7-14
	REVISED -
	REVISED -

Maryland Department of Transportation
STATE HIGHWAY ADMINISTRATION
STANDARDS FOR HIGHWAYS AND INCIDENTAL STRUCTURES

PRECAST TRIPLE WRM INLET

STANDARD NO. MD 374.27-01