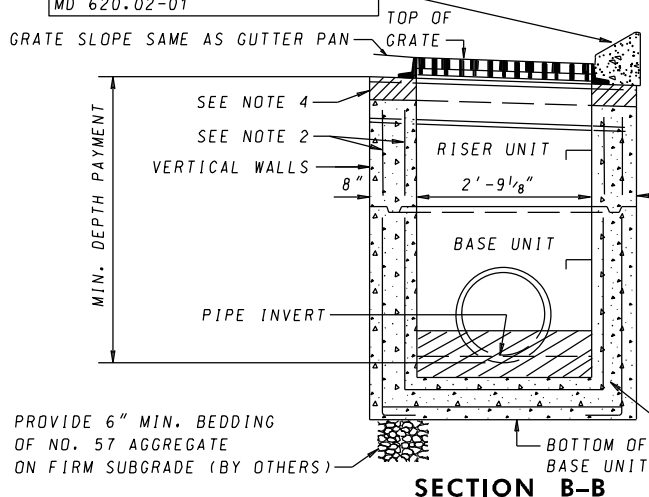


SECTION A-A NOTES

1. CONCRETE TO BE MIX NO. 6 (4500 PSI).
2. REINFORCING: WALLS - 2 LAYERS OF 4X4-W8.5 X W8.5 WELDED WIRE FABRIC; BASE - 2 LAYERS OF 4X4 - W7.0 X W7.0 WELDED WIRE FABRIC.
3. THREADED PLASTIC INSERTS TO BE PROVIDED FOR HANDLING.
4. GRADE AND SLOPE ADJUSTMENTS AND SUPPORT BEAM ANCHORAGE SHALL BE COMPLETED IN THE FIELD USING CONCRETE MIX NO.6 GRADE AND SLOPE ADJUSTMENTS SHALL BE MIN.2", MAX. 9".
5. PIPE OPENINGS TO BE PROVIDED AS REQUIRED. FOR SIZE, LOCATION AND ELEVATIONS REFER TO THE CONSTRUCTION PLANS.
6. PLACEMENT OF SUBGRADE DRAINAGE WILL BE AS DIRECTED BY THE ENGINEER OR AS NOTED ON THE CONSTRUCTION PLANS.
7. LADDER RUNGS SHALL BE IN ACCORDANCE WITH STD MD 383.91 OR 383.92. RUNGS ARE INCIDENTAL TO THE COST OF THE INLET.
8. MINIMUM DEPTH PAYMENT PER EACH INLET INCLUDES DEPTHS UP TO 3'-6". VERTICAL DEPTH PAYMENT PER LINEAR FOOT SHALL INCLUDE ALL DEPTHS IN EXCESS OF 3'-6" INCLUDING ALL APPURTENANCES.
9. BASE UNIT WALLS MAY TAPER PER MANUFACTURER'S DESIGN.
10. FROM CURB LINE, INLET HAS BEEN DESIGNED FOR HS-25 LOADING, ACCORDING TO AASHTO LRFD BRIDGE DESIGN SPECIFICATIONS.

THIS INLET TO BE USED WITH TYPE B OR C CURB. CURB PAID FOR SEPARATELY. FOR CURB DETAILS SEE STD. MD 620.02 & MD 620.02-01



PROVIDE 6" MIN. BEDDING OF NO. 57 AGGREGATE ON FIRM SUBGRADE (BY OTHERS)

SPECIFICATION 305	CATEGORY CODE ITEMS
APPROVED	DIRECTOR - OFFICE OF HIGHWAY DEVELOPMENT
	APPROVAL • SHA REVISIONS
	APPROVAL • FEDERAL HIGHWAY ADMINISTRATION
	APPROVAL 2-22-91
	APPROVAL 1-2-91
	REVISD 10-7-14
REVISD 9-29-14	
REVISD -	REVISD
REVISD	REVISD

Maryland Department of Transportation
STATE HIGHWAY ADMINISTRATION
 STANDARDS FOR HIGHWAYS AND INCIDENTAL STRUCTURES

PRECAST TRIPLE WR INLET

STANDARD NO. MD 374.26