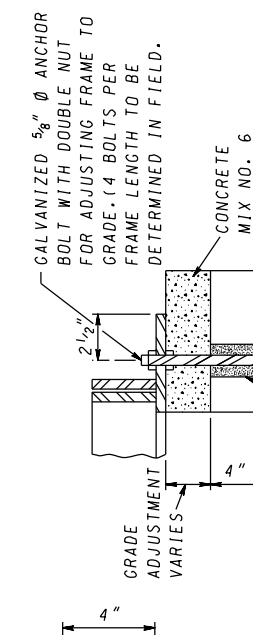
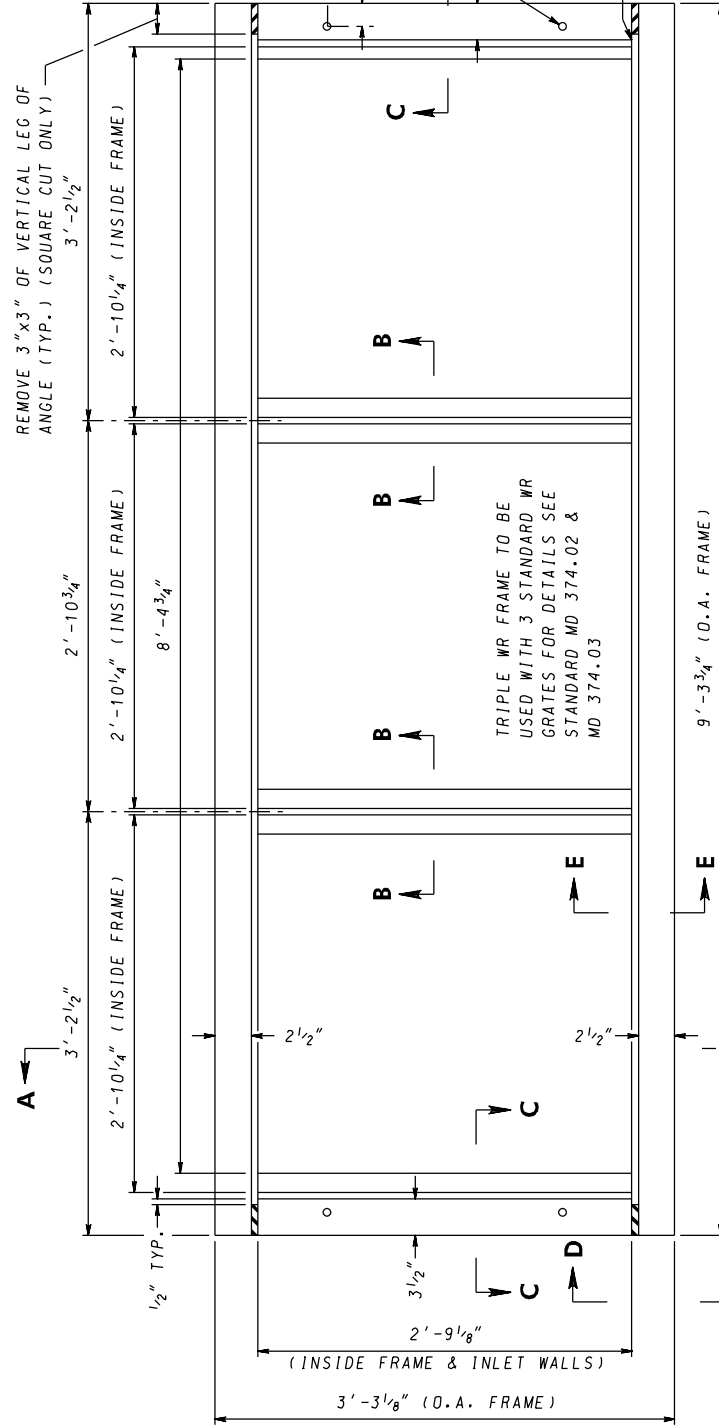


**NOTE**

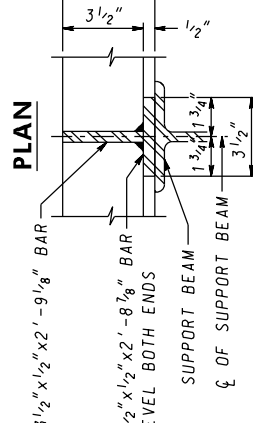
REMOVE 3"x3" OF VERTICAL LEG OF ANGLE (TYP.) (SQUARE CUT ONLY) 3'-2 1/2"

MANUFACTURER TO VERIFY THAT FRAME IS DESIGNED FOR HS-25 LOADING.

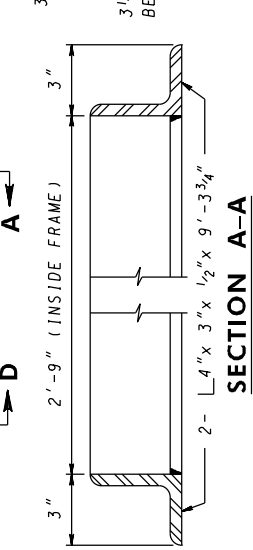


INSIDE INLET WALL  
 DRILL, SET AND GROUT IN FIELD AS DIRECTED BY THE ENGINEER.

**FRAME ANCHORAGE DETAIL**

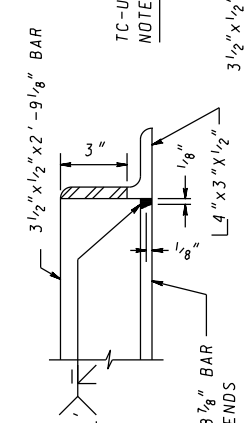


**SECTION B-B**

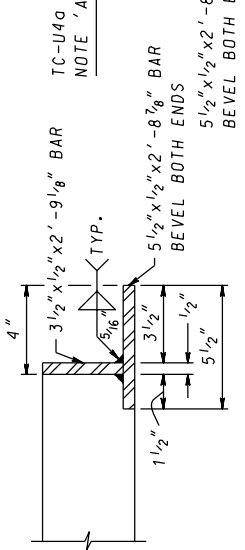


**SECTION A-A**

NOTE 'A' - WELD 5 1/2" x 1/2" BAR TO 4" x 3" x 1/2" L BEFORE WELDING 3 1/2" x 1/2" BAR



**SECTION D-D**



**SECTION C-C**

NOTE: MANUFACTURER TO VERIFY THAT FRAME IS DESIGNED FOR HS-25 LOADING

SPECIFICATION	CATEGORY CODE ITEMS
APPROVED	DIRECTOR - OFFICE OF HIGHWAY DEVELOPMENT
APPROVAL • SHA REVISIONS	APPROVAL • FEDERAL HIGHWAY ADMINISTRATION
APPROVAL 8-9-82	APPROVAL 9-13-82
REVISED 10-1-01	REVISED 8-1-84
REVISED 10-7-14	REVISED 9-29-14
REVISED	REVISED

**Maryland Department of Transportation**  
**STATE HIGHWAY ADMINISTRATION**  
 STANDARDS FOR HIGHWAYS AND INCIDENTAL STRUCTURES

**TRIPLE WR FRAME**

**STANDARD NO. MD 374.09**

