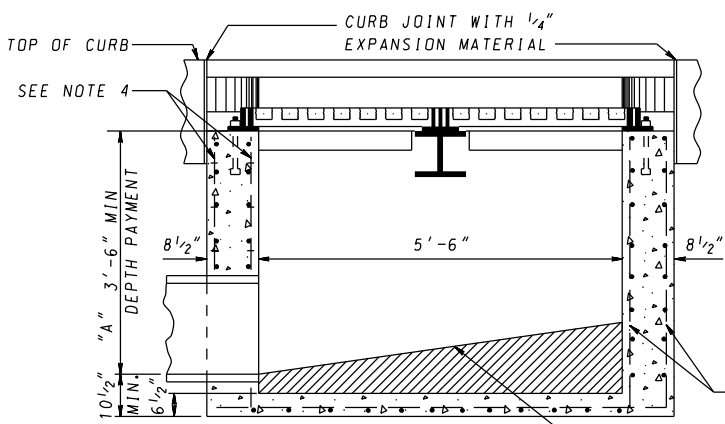


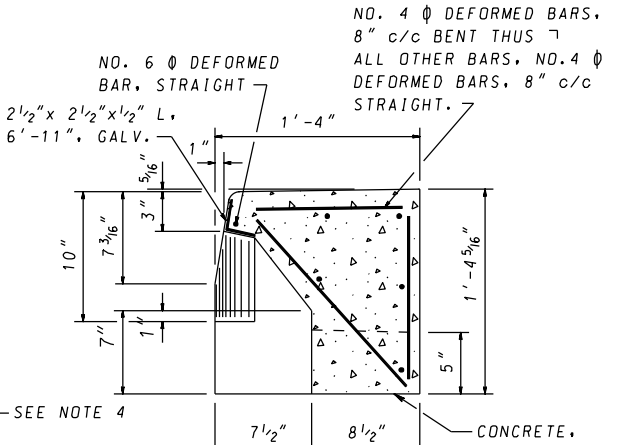
LEAVE 4"x4" OPENINGS FOR SUBGRADE DRAINAGE IF DIRECTED

PLAN

FRONT ELEVATION
PRECAST CURB

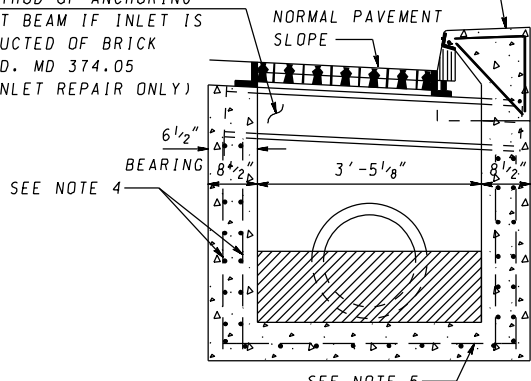


SECTION A-A



DETAIL B-B
PRECAST CURB

W8x31 (GALVANIZED) SUPPORT BEAM 4'-6 1/8" LONG FOR DETAILS SEE STD. MD 374.03 FOR METHOD OF ANCHORING SUPPORT BEAM IF INLET IS CONSTRUCTED OF BRICK SEE STD. MD 374.05 (FOR INLET REPAIR ONLY)



SECTION B-B

GENERAL NOTES

1. CONCRETE TO BE MIX NO. 2 (3,000 PSI).
2. SIZE, TYPE, AND DIRECTION OF INLET CONNECTION WILL VARY TO SUIT CONDITIONS.
3. SEE SHA LATEST SPECIFICATIONS FOR INLETS.
4. WHEN "A" IS LESS THAN 7'-0", WALL REINFORCEMENT SHALL BE ONE LAYER OF NO. 4 DEFORMED BARS @ 6" C/C, TWO WAYS, AND HAVE 3.5" COVER. WHEN "A" IS GREATER THAN 7'-0" AND LESS THAN THE 15'-0", WALL REINFORCEMENT TO BE TWO LAYERS OF NO. 4 DEFORMED BARS @ 6" C/C, TWO WAYS, ON INSIDE AND OUTSIDE OF WALL WITH 2" COVER.
5. BASE REINFORCEMENT SHALL BE ONE LAYER OF NO. 4 DEFORMED BARS @ 6" C/C, TWO WAYS, WITH 2" COVER FROM TOP OF BASE.
6. PLACE 1/4" EXPANSION MATERIAL OF THE SAME TYPE APPROVED FOR PAYMENT IN BETWEEN THE FRAME AND ABUTTING RIGID PAVEMENT AND BETWEEN ENDS OF INLET CURB AND NORMAL CURB.
7. BRICK FOR MASONRY TO COMPLY WITH THE SHA SPECIFICATION.
8. FOR UNDEPRESSED INLETS USE NORMAL PAVEMENT SLOPE..
9. LADDER RUNGS SHALL BE IN ACCORDANCE WITH STD MD 383.91 AND MD 383.92 OR AS DIRECTED BY THE ENGINEER.
10. FROM THE CURB LINE, INLET HAS BEEN DESIGNED FOR HS-25 LOADING ACCORDING TO AASHTO LRFD BRIDGE DESIGN SPECIFICATIONS AND TO A MAXIMUM DEPTH OF 15'-0".

SPECIFICATION 305	CATEGORY CODE ITEMS
APPROVED	DIRECTOR - OFFICE OF HIGHWAY DEVELOPMENT
	APPROVAL • SHA REVISIONS
	APPROVAL • FEDERAL HIGHWAY ADMINISTRATION
	APPROVAL 2-28-75
	APPROVAL 5-12-75
	REVISD 10-1-01
REVISD 2-24-88	
REVISD 10-7-14	
REVISD 9-29-14	
REVISD	REVISD

Maryland Department of Transportation
STATE HIGHWAY ADMINISTRATION
STANDARDS FOR HIGHWAYS AND INCIDENTAL STRUCTURES

STANDARD WR INLET

STANDARD NO. MD 374.04