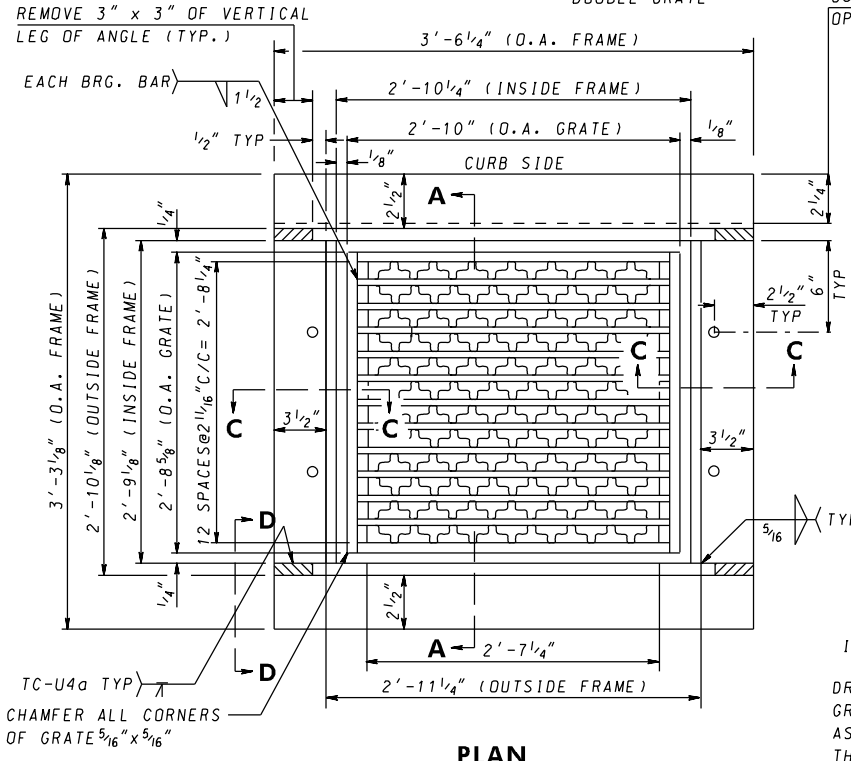


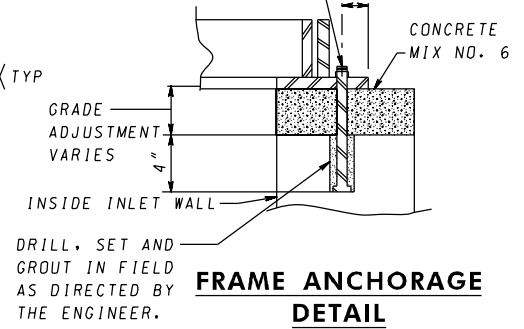
**PLAN**  
DOUBLE GRATE



**PLAN**  
SINGLE GRATE

USE 4"x1/2" FLAT BAR WHEN OPEN FACED CURB IS USED  
**GENERAL NOTES**

1. FRAMES & GRATES TO BE SQUARE, FLAT AND TRUE.
2. STRUCTURAL STEEL SHALL BE A.S.T.M. A-36.
3. FRAMES AND GRATES TO BE GALVANIZED AFTER FABRICATION IN ACCORDANCE WITH A.S.T.M. A-123.
4. GRADE AND SLOPE ADJUSTMENTS COMPLETED IN THE FIELD USING CONCRETE MIX # 6.
5. MANUFACTURER TO VERIFY THAT GRATE AND FRAME HAVE BEEN DESIGNED FOR HS-25 LOADING, ACCORDING TO AASHTO LRFD BRIDGE DESIGN SPECIFICATIONS.



SPECIFICATION <b>305</b>	CATEGORY CODE ITEMS
APPROVED	DIRECTOR - OFFICE OF HIGHWAY DEVELOPMENT
	APPROVAL • SHA REVISIONS
	APPROVAL • FEDERAL HIGHWAY ADMINISTRATION
	APPROVAL <b>8-30-82</b>
	REVISD <b>10-1-01</b>
	REVISD <b>10-7-14</b>

**Maryland Department of Transportation**  
**STATE HIGHWAY ADMINISTRATION**  
 STANDARDS FOR HIGHWAYS AND INCIDENTAL STRUCTURES  
**STANDARD WR & WRM INLET**  
**FRAME & GRATE**  
**STANDARD NO. MD 374.02**