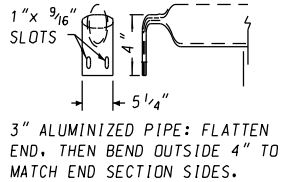
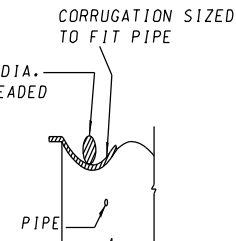
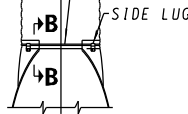


**TYPE #1 CONNECTOR
DETAIL**



**END TREATMENT OF
SAFETY BARS
DETAIL**

1/2" DIA. THREADED ROD
OVER TOP OF END SECTION.
SIDE LUGS TO BE BOLTED
TO END SECTION



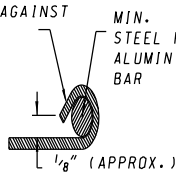
SECTION B-B

**CROSS DRAINAGE
BAR
DETAIL**

**TYPE #2 CONNECTOR
DETAILS**

30" MAX. SPAN FOR CROSS DRAINAGE STRUCTURE
24" MAX. SPAN FOR PARALLEL DRAINAGE STRUCTURE

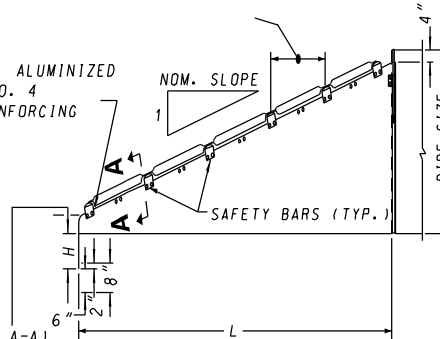
EDGE OF SIDEWALL SHEET
ROLLED SNUGLY AGAINST
STEEL ROD



SECTION A-A

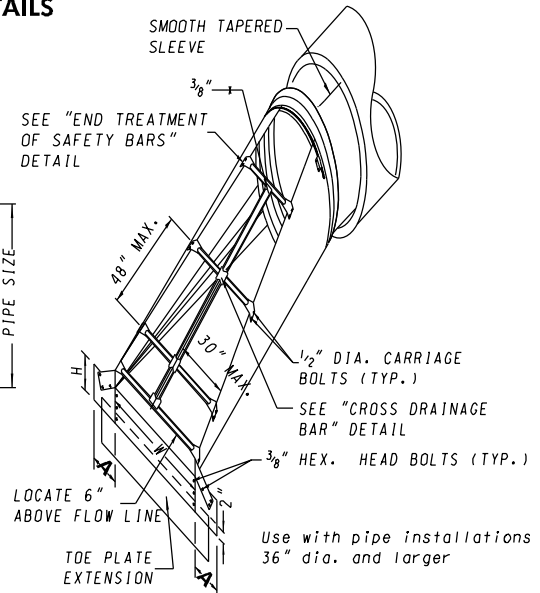
REINFORCED EDGE FULL
LENGTH OF END SECTION (SEE SECTION A-A)

MIN. 7/16" DIA. ALUMINIZED
STEEL ROD OR NO. 4
ALUMINIZED REINFORCING
BAR



SIDE VIEW

*NUMBER OF BARS REQUIRED WILL
VARY DEPENDING ON THE LENGTH
OF THE END SECTION.



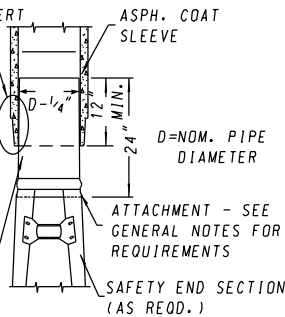
CROSS DRAINAGE STRUCTURE

Use with pipe installations
36" dia. and larger

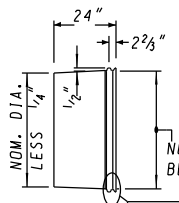
INSERT "A"

(ALT. VIEW FOR FEMALE END)
SEE SMOOTH TAPERED
SLEEVE DETAIL

FOR ALT.
VIEW,
SEE INSERT
"A"



ATTACHMENT - SEE
GENERAL NOTES FOR
REQUIREMENTS
SAFETY END SECTION
(AS REQD.)



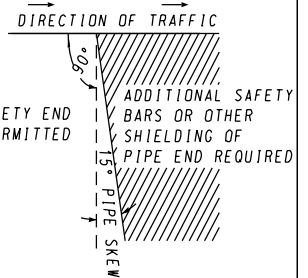
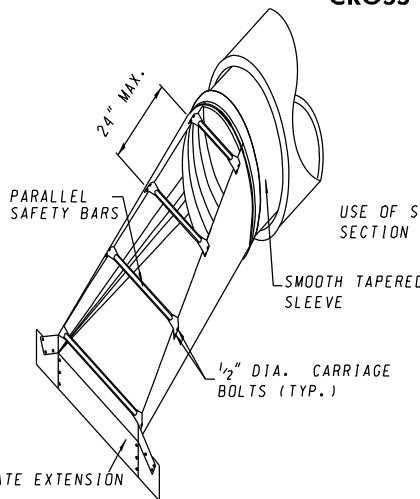
**SMOOTH TAPERED SLEEVE FOR ATTACHING
SAFETY END SECTIONS TO SMOOTH PIPE**

NOTE:
METAL TO BE SMOOTH ALUMINIZED STEEL IN
ACCORDANCE WITH AASHTO M218
0.079 IN. (14 GA.) MIN. THKN. UP TO 18" DIA.
0.109 IN. (12 GA.) MIN. THKN. OVER 18" DIA.
NOM. DIA. + 1/8"
BEFORE CORRUGATING

FORM 1/2" X 2" CORRUGATIONS.
MAINTAIN INSIDE DIAMETER OF SLEEVE.

PARALLEL DRAINAGE STRUCTURE

USE WITH SINGLE PIPE INSTALLATIONS 30" DIA. OR LARGER
USE WITH MULTIPLE PIPE INSTALLATIONS 15" DIA. OR LARGER



LOCATION DIAGRAM

SPECIFICATION 305	CATEGORY CODE ITEMS
APPROVED	DIRECTOR - OFFICE OF HIGHWAY DEVELOPMENT
	APPROVAL • SHA REVISIONS
	APPROVAL • FEDERAL HIGHWAY ADMINISTRATION
	APPROVAL 10-7-14
	APPROVAL 9-29-14
	REVISED

**Maryland Department of Transportation
STATE HIGHWAY ADMINISTRATION**
STANDARDS FOR HIGHWAYS AND INCIDENTAL STRUCTURES
**SAFETY END SECTION FOR CONCRETE,
PLASTIC PIPE**

STANDARD NO.

MD-373.00