

TEMPORARY TRAFFIC CONTROL TYPICAL APPLICATION

NOTES

- REFER TO GENERAL NOTES 19.1 AND 19.2 FOR THE USE OF TPRS.
- REFER TO "RECOMMENDED TPRS SPACING IN ARRAY" TABLE FOR SPACING BETWEEN RUMBLE STRIPS IN ARRAY.

RECOMMENDED TPRS SPACING IN ARRAY

SPEED LIMIT (MPH)	TPRS SPACING (CENTER-TO-CENTER, FT)
≤40	10
41-55	15
≥56	20


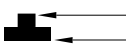

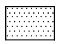

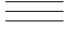

- REFER TO "SPACING BETWEEN TPRS AND SIGNS" TABLE TO DETERMINE THE CORRESPONDING SPACING. GEOMETRY OF THE ROADWAY MAY DICTATE THE LOCATION OF THE RUMBLE STRIPS. CHANGES SHALL BE APPROVED BY THE ENGINEER.

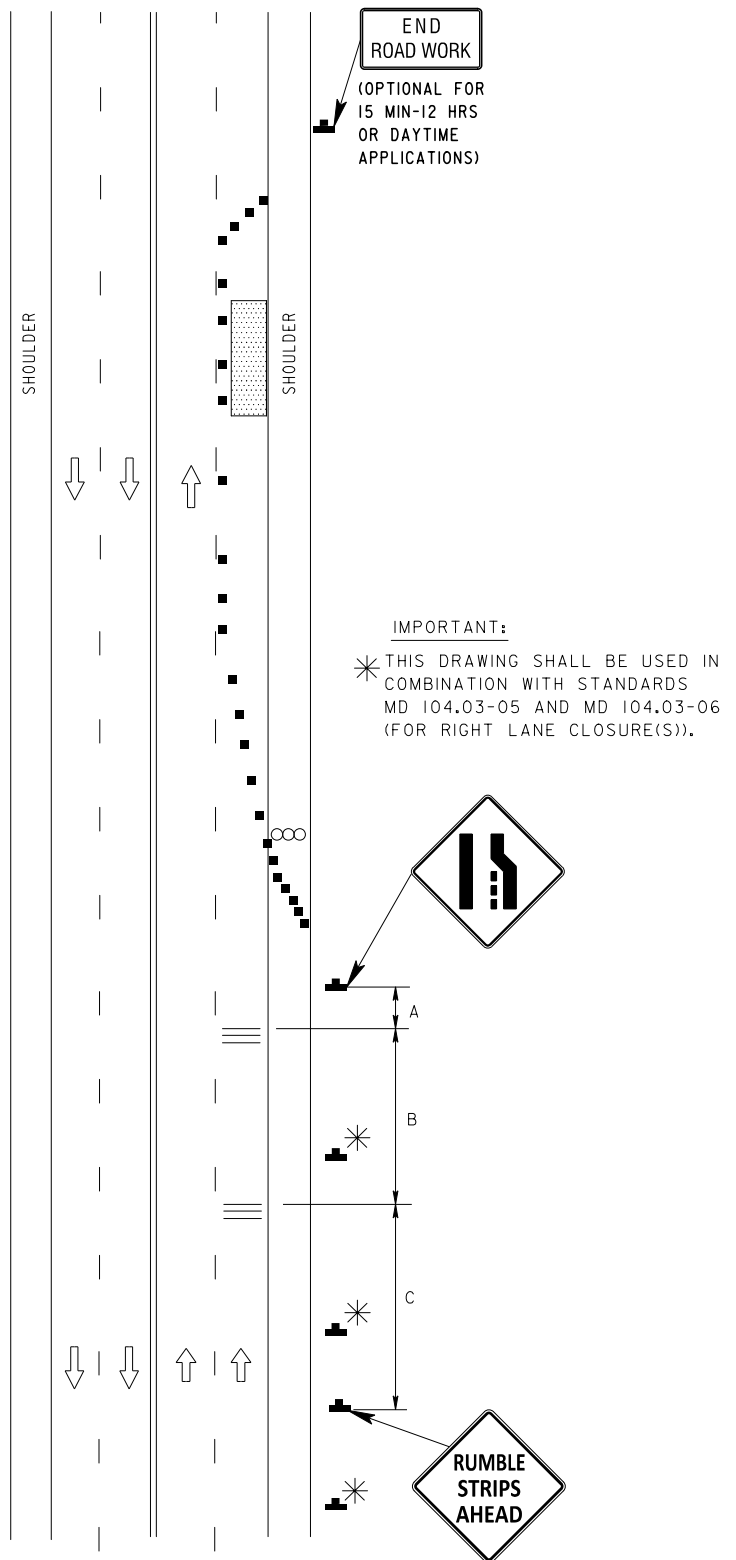
SPACING BETWEEN TPRS AND SIGNS

DURATION	SPEED LIMIT (MPH)	DISTANCE (FT)		
		A	B	C
15 MIN- 12 HRS OR DAYTIME	≤40	150	500	700
	>40	200	700	1300
OVER 12 HRS OR NIGHTTIME	≤40	150	500	900
	>40	200	700	1400

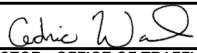
- SIMILAR PLACEMENT FOR TPRS AND "RUMBLE STRIPS AHEAD" SIGN SHALL BE USED WITH STANDARD DETAILS MD 104.03-03 AND MD 104.03-04 (FOR LEFT LANE CLOSURE(S)).

KEY:

-  CHANNELIZING DEVICES
-  SIGN SUPPORT
FACE OF SIGN
-  DIRECTION OF TRAFFIC
-  WORK SITE
-  ARROW PANEL
-  TEMPORARY PORTABLE RUMBLE STRIPS ARRAY (TPRS ARRAY)
-  ADVANCE WARNING SIGNS REPRESENTED



IMPORTANT:
 * THIS DRAWING SHALL BE USED IN COMBINATION WITH STANDARDS MD 104.03-05 AND MD 104.03-06 (FOR RIGHT LANE CLOSURE(S)).

SPECIFICATION 104	CATEGORY CODE ITEMS
APPROVED  DIRECTOR - OFFICE OF TRAFFIC AND SAFETY	
APPROVAL SHA REVISIONS	APPROVAL FEDERAL HIGHWAY ADMINISTRATION
APPROVAL 2-19-24	APPROVAL 12-06-23
REVISED	REVISED
REVISED	REVISED
REVISED	REVISED

MOT MARYLAND DEPARTMENT OF TRANSPORTATION
 STATE HIGHWAY ADMINISTRATION

**STANDARDS FOR HIGHWAYS AND INCIDENTAL STRUCTURES
 LANE CLOSURE(S) ON
 MULTILANE UNDIVIDED
 W/ TEMPORARY PORTABLE RUMBLE STRIPS
 STANDARD NO. MD 104.06-29**