

## TEMPORARY TRAFFIC CONTROL TYPICAL APPLICATION

### NOTES

1. REFER TO GENERAL NOTES 19.1 AND 19.2 FOR THE USE OF TPRS.
2. REFER TO "RECOMMENDED TPRS SPACING IN ARRAY" TABLE FOR SPACING BETWEEN RUMBLE STRIPS IN ARRAY.

#### RECOMMENDED TPRS SPACING IN ARRAY

SPEED LIMIT (MPH)	TPRS SPACING (CENTER-TO-CENTER, FT)
≤40	10
41-55	15
≥56	20

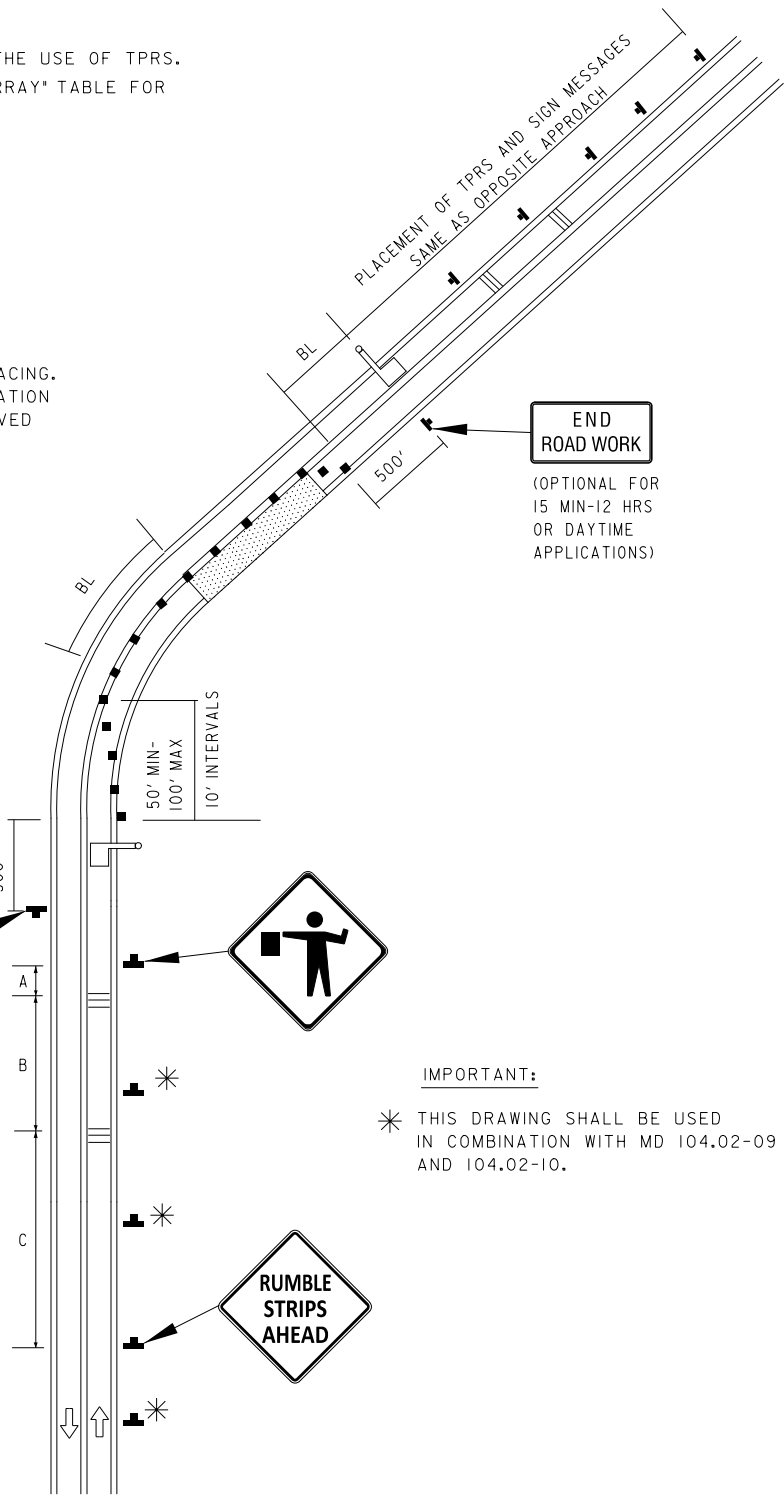
3. REFER TO "SPACING BETWEEN TPRS AND SIGNS" TABLES TO DETERMINE THE CORRESPONDING SPACING. GEOMETRY OF ROADWAY MAY DICTATE THE LOCATION OF RUMBLE STRIPS. CHANGES SHALL BE APPROVED BY THE ENGINEER.

#### SPACING BETWEEN TPRS AND SIGNS

DURATION	SPEED LIMIT (MPH)	DISTANCE (FT)		
		A	B	C
15 MIN.-12 HRS OR DAYTIME	≤40	150	700	300
	>40	200	700	500
OVER 12 HRS OR NIGHTTIME	≤40	150	500	850
	>40	200	700	1400

### KEY:

- CHANNELIZING DEVICES
- SIGN SUPPORT
- FACE OF SIGN
- DIRECTION OF TRAFFIC
- WORK SITE
- FLAGGER
- TEMPORARY PORTABLE RUMBLE STRIPS ARRAY (TPRS ARRAY)
- ADVANCE WARNING SIGNS REPRESENTED



**IMPORTANT:**  
 \* THIS DRAWING SHALL BE USED IN COMBINATION WITH MD 104.02-09 AND 104.02-10.

<b>SPECIFICATION</b> 104	<b>CATEGORY CODE ITEMS</b>	<b>MARYLAND DEPARTMENT OF TRANSPORTATION</b> STATE HIGHWAY ADMINISTRATION  <b>STANDARDS FOR HIGHWAYS AND INCIDENTAL STRUCTURES</b> <b>FLAGGING OPERATION/2-LANE, 2-WAY</b> <b>W/TEMPORARY PORTABLE RUMBLE STRIPS</b>
<b>APPROVED</b> DIRECTOR - OFFICE OF TRAFFIC AND SAFETY		
<b>APPROVAL SHA REVISIONS</b>	<b>APPROVAL FEDERAL ADMINISTRATION</b>	
<b>APPROVAL</b> 2-19-24	<b>APPROVAL</b> 12-06-23	
<b>REVISED</b>	<b>REVISED</b>	
<b>REVISED</b>	<b>REVISED</b>	
<b>STANDARD NO.</b>		<b>MD 104.06-28</b>