

TEMPORARY TRAFFIC CONTROL TYPICAL APPLICATION

NOTE:

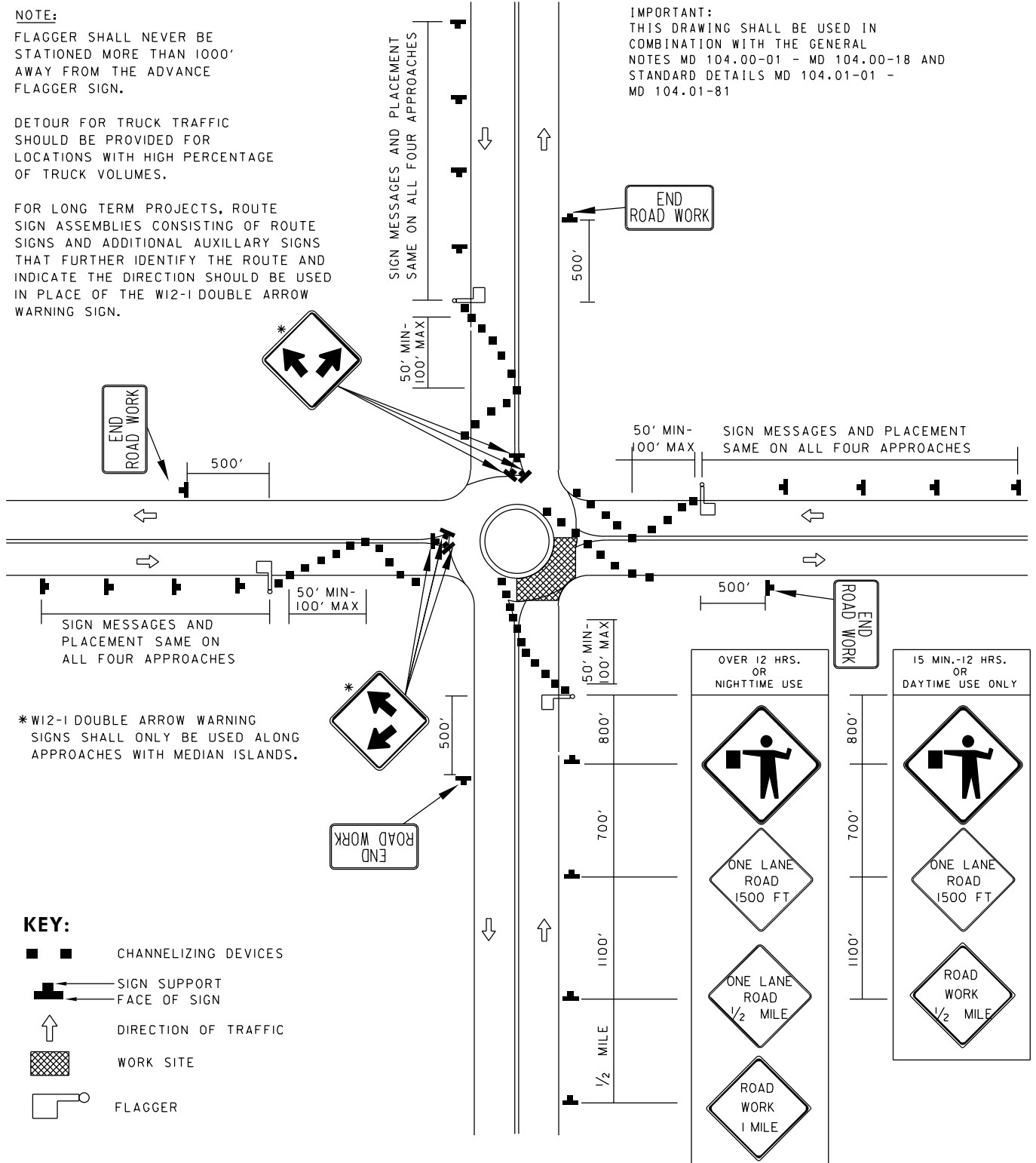
FLAGGER SHALL NEVER BE STATIONED MORE THAN 1000' AWAY FROM THE ADVANCE FLAGGER SIGN.

DETOUR FOR TRUCK TRAFFIC SHOULD BE PROVIDED FOR LOCATIONS WITH HIGH PERCENTAGE OF TRUCK VOLUMES.

FOR LONG TERM PROJECTS, ROUTE SIGN ASSEMBLIES CONSISTING OF ROUTE SIGNS AND ADDITIONAL AUXILIARY SIGNS THAT FURTHER IDENTIFY THE ROUTE AND INDICATE THE DIRECTION SHOULD BE USED IN PLACE OF THE W12-1 DOUBLE ARROW WARNING SIGN.

IMPORTANT:

THIS DRAWING SHALL BE USED IN COMBINATION WITH THE GENERAL NOTES MD 104.00-01 - MD 104.00-18 AND STANDARD DETAILS MD 104.01-01 - MD 104.01-81



SPECIFICATION	CATEGORY CODE ITEMS
APPROVED	<i>Adrian W. [Signature]</i> DIRECTOR - OFFICE OF TRAFFIC AND SAFETY
 SHA <small>State Highway Administration</small>	APPROVAL • SHA REVISIONS
	APPROVAL • FEDERAL HIGHWAY ADMINISTRATION
	APPROVAL 03-08-14
	APPROVAL 02-04-14
REVISIONS	REVISIONS
REVISIONS	REVISIONS
REVISIONS	REVISIONS

Maryland Department of Transportation
STATE HIGHWAY ADMINISTRATION
 STANDARDS FOR HIGHWAYS AND INCIDENTAL STRUCTURES

ROUNDBOUT FLAGGING OPERATION
2-LANE, 2-WAY ALL SPEEDS

STANDARD NO. MD-104.06-27