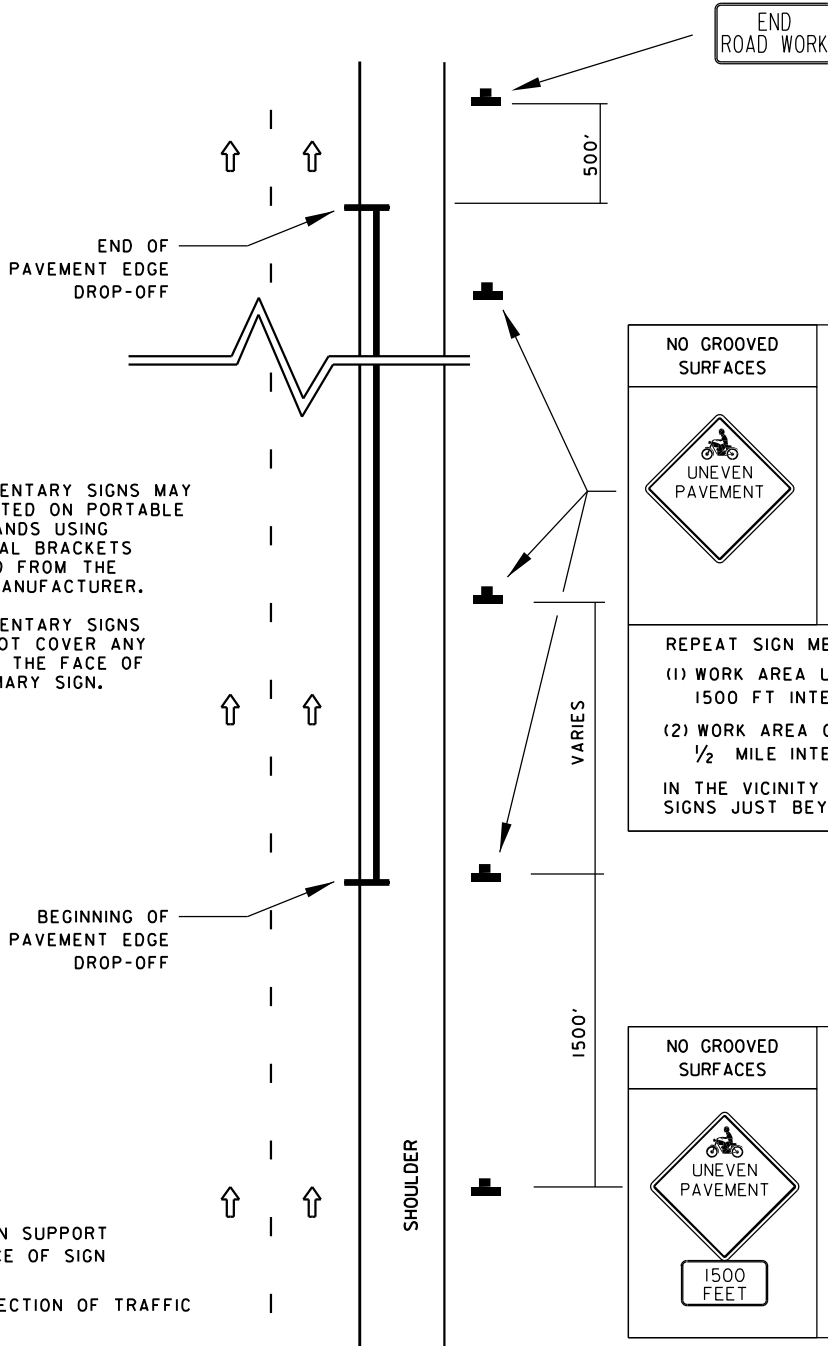


# TEMPORARY TRAFFIC CONTROL TYPICAL APPLICATION

**IMPORTANT:**  
 THIS DRAWING SHALL BE USED IN  
 COMBINATION WITH THE GENERAL  
 NOTES MD 104.00-01 - MD 104.00-18 AND  
 STANDARDS MD 104.01-01 - MD 104.01-81



SUPPLEMENTARY SIGNS MAY  
 BE MOUNTED ON PORTABLE  
 SIGN STANDS USING  
 ADDITIONAL BRACKETS  
 OBTAINED FROM THE  
 STAND MANUFACTURER.

SUPPLEMENTARY SIGNS  
 SHALL NOT COVER ANY  
 PART OF THE FACE OF  
 THE PRIMARY SIGN.

NO GROOVED SURFACES	GROOVED SURFACES PRESENT	
REPEAT SIGN MESSAGE: (1) WORK AREA UP TO 1 MILE; SPACE SIGNS AT 1500 FT INTERVALS. (2) WORK AREA OVER 1 MILE; SPACE SIGNS AT 1/2 MILE INTERVALS. IN THE VICINITY OF ENTRANCE RAMP, INSTALL SIGNS JUST BEYOND THESE RAMP.		

NO GROOVED SURFACES	GROOVED SURFACES PRESENT

**KEY**

- SIGN SUPPORT
- FACE OF SIGN
- DIRECTION OF TRAFFIC

<b>SPECIFICATION</b> 104,504,508,509	<b>CATEGORY CODE ITEMS</b>
<b>APPROVED</b>	<i>Cedric Wald</i> DIRECTOR - OFFICE OF TRAFFIC AND SAFETY
<b>APPROVAL</b>	<b>APPROVAL</b>
<b>REVISIONS</b>	<b>FEDERAL HIGHWAY ADMINISTRATION</b>
APPROVAL 8-20-03	APPROVAL 9-23-03
REVISED 8-11-10	REVISED 7-29-10
REVISED 1-3-19	REVISED 9-18-17
REVISED	REVISED

**MDOT** MARYLAND DEPARTMENT OF TRANSPORTATION  
 STATE HIGHWAY ADMINISTRATION

**STANDARDS FOR HIGHWAYS AND INCIDENTAL STRUCTURES**

**PAVEMENT EDGE DROP-OFF 2.5 INCHES OR LESS  
 (BETWEEN TRAFFIC LANES AND SHOULDER)**

**STANDARD NO. MD 104.06-16**