

TEMPORARY TRAFFIC CONTROL TYPICAL APPLICATION






IMPORTANT:
THIS DRAWING SHALL BE USED IN COMBINATION WITH THE GENERAL NOTES MD 104.00-01 - MD 104.00-18 AND STANDARD DETAILS MD 104.01-01 - MD 104.01-81

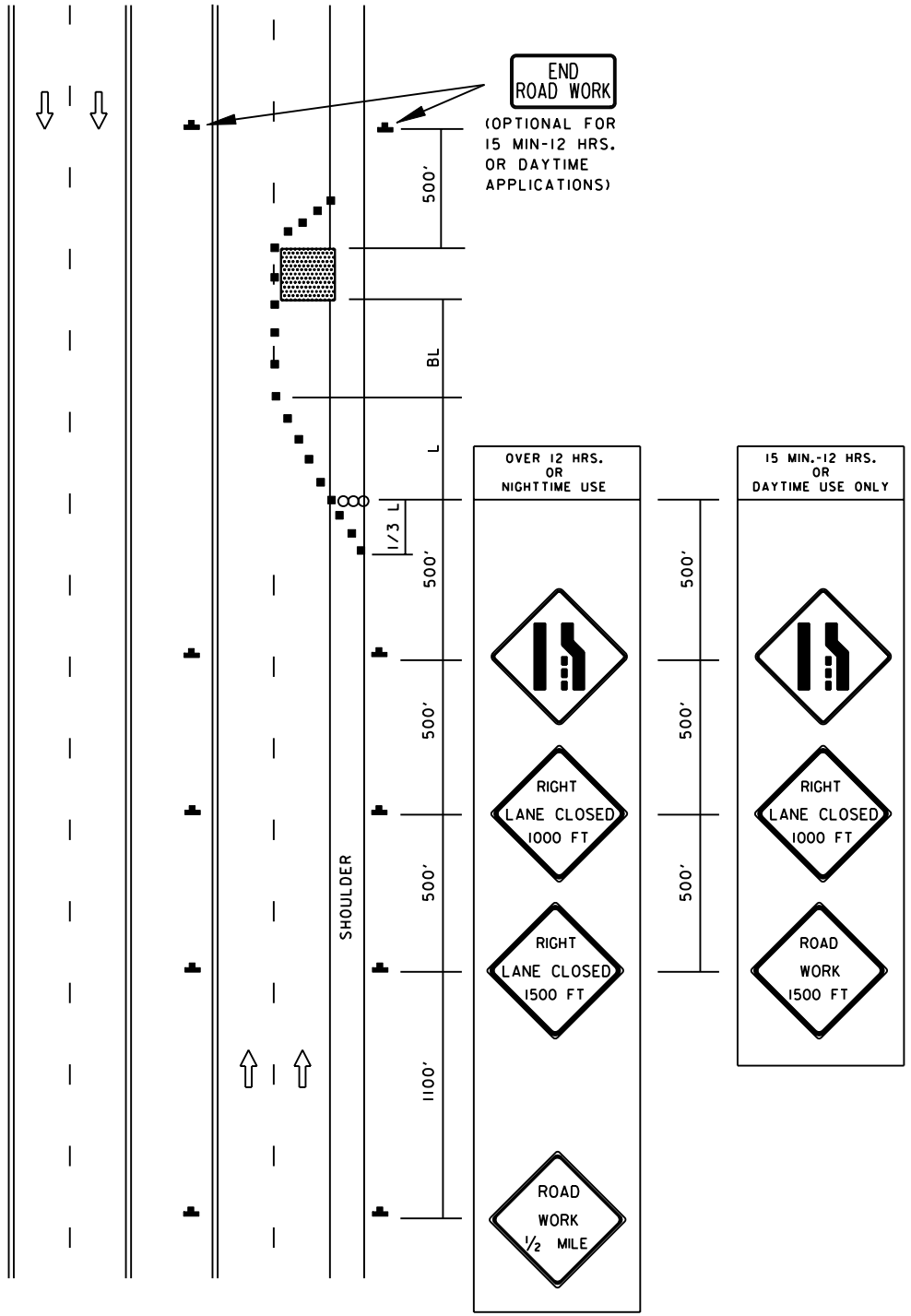
NOTE:

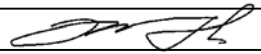

THERE SHALL BE A MINIMUM OF SEVEN CHANNELIZING DEVICES IN THE SHOULDER TAPER.

THE ENGINEER SHOULD CONSIDER ADDITIONAL, ADJACENT LANE CLOSURES WHEN THE POSSIBILITY OF UNPLANNED TRAVELWAY ENCROACHMENTS EXISTS.

KEY:

-  CHANNELIZING DEVICES
-  SIGN SUPPORT
FACE OF SIGN
-  DIRECTION OF TRAFFIC
-  WORK SITE
-  ARROW PANEL



SPECIFICATION 104	CATEGORY CODE ITEMS	
APPROVED	 DIRECTOR - OFFICE OF TRAFFIC AND SAFETY	
 SHA State Highway Administration	APPROVAL • SHA REVISIONS	APPROVAL • FEDERAL HIGHWAY ADMINISTRATION
	APPROVAL 8-20-03	APPROVAL 9-23-03
	REVISED 8-11-10	REVISED 7-29-10
	REVISED	REVISED
	REVISED	REVISED

Maryland Department of Transportation
STATE HIGHWAY ADMINISTRATION
STANDARDS FOR HIGHWAYS AND INCIDENTAL STRUCTURES

RIGHT LANE CLOSURE / DIVIDED UNCON.
EQ/LESS THAN 40 MPH

STANDARD NO. MD 104.04-06