

TEMPORARY TRAFFIC CONTROL TYPICAL APPLICATION

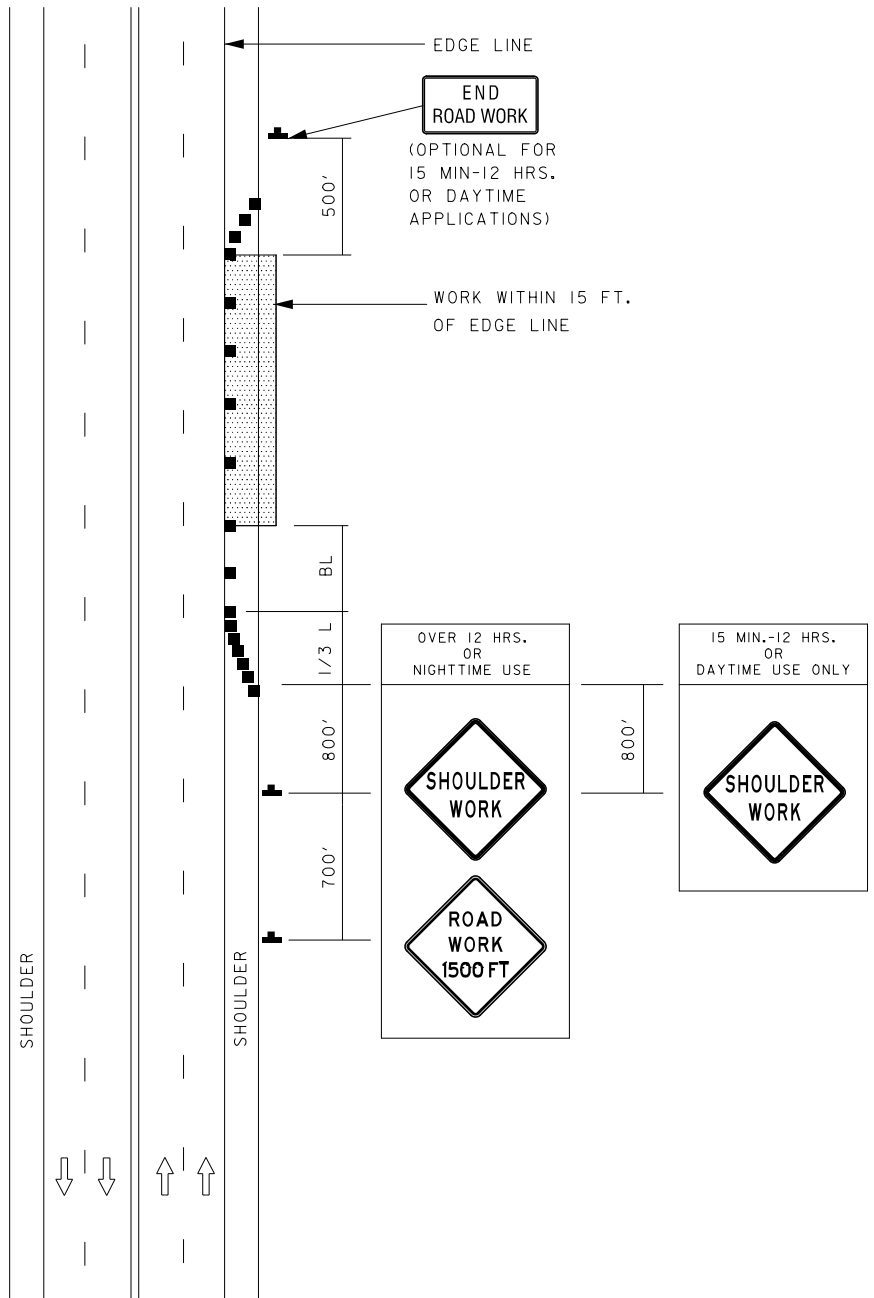
IMPORTANT:
THIS DRAWING SHALL BE USED IN COMBINATION WITH THE GENERAL NOTES MD 104.00-01 - MD 104.00-18 AND STANDARD DETAILS MD 104.01-01 - MD 104.01-81

NOTES:

1. SHOULDER CLOSED SIGNS ARE REQUIRED IN PLACE OF SHOULDER WORK SIGNS WHEN THE SHOULDER IS CLOSED BY POSITIVE PROTECTION (TEMPORARY CONCRETE BARRIER OR SIMILAR DEVICE). REFER TO STANDARD NO. MD 104.06-18.
2. WHEN WORK INVOLVES A PAVEMENT EDGE DROP-OFF, REFER TO STANDARD NOS. MD 104.06-15 TO MD 104.06-19.
3. THERE SHALL BE A MINIMUM OF SEVEN CHANNELIZING DEVICES IN THE SHOULDER TAPER.
4. THE ENGINEER SHOULD CONSIDER ADDITIONAL, ADJACENT LANE CLOSURES WHEN THE POSSIBILITY OF UNPLANNED TRAVELWAY ENCROACHMENTS EXISTS.
5. FOR SAFETY, A MINIMUM OF 2 FEET LATERAL CLEARANCE SHALL BE MAINTAINED BETWEEN ANY VEHICLE AND/OR EQUIPMENT POSITIONED ON THE SHOULDER AND THE ADJACENT OPEN TRAVEL LANE. THE ENGINEER SHOULD CONSIDER ADDITIONAL SAFETY MEASURES.
6. REFER TO MD 104.01-11A FOR THE USE OF A PV.
7. REFER TO MD 104.01-30B FOR THE POSITIONING OF A PV.

KEY:

- ■ CHANNELIZING DEVICES
- ▬ ← SIGN SUPPORT
- ▬ ← FACE OF SIGN
- ↑ DIRECTION OF TRAFFIC
- ▨ WORK SITE



SPECIFICATION 104	CATEGORY CODE ITEMS		
APPROVED	<i>Cedric Wald</i> DIRECTOR - OFFICE OF TRAFFIC AND SAFETY		
APPROVAL SHA REVISIONS	APPROVAL FEDERAL HIGHWAY ADMINISTRATION		
APPROVAL	8-20-03	APPROVAL	9-23-03
REVISED	8-11-10	REVISED	10-5-10
REVISED	2-19-24	REVISED	11-16-23
REVISED		REVISED	

MOT MARYLAND DEPARTMENT OF TRANSPORTATION
STATE HIGHWAY ADMINISTRATION

STANDARDS FOR HIGHWAYS AND INCIDENTAL STRUCTURES
SHOULDER WORK/MULTILANE UNDIVIDED
EQ/LESS THAN 40 MPH

STANDARD NO.

MD 104.03-02