

TEMPORARY TRAFFIC CONTROL TYPICAL APPLICATION

IMPORTANT:
THIS DRAWING SHALL BE USED IN COMBINATION WITH THE GENERAL NOTES MD 104.00-01 - MD 104.00-18 AND STANDARD DETAILS MD 104.01-01 - MD 104.01-81

NOTES:
IF THE LEAD WORK VEHICLE IS TRAVELING AT THE POSTED SPEED LIMIT OR WITHIN 15 MPH OF IT, THEN NO BACK UP VEHICLE IS NECESSARY.


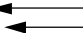
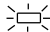


IN URBAN AREAS THE DISTANCE MAINTAINED BETWEEN VEHICLES MAY BE DECREASED AS NEEDED.

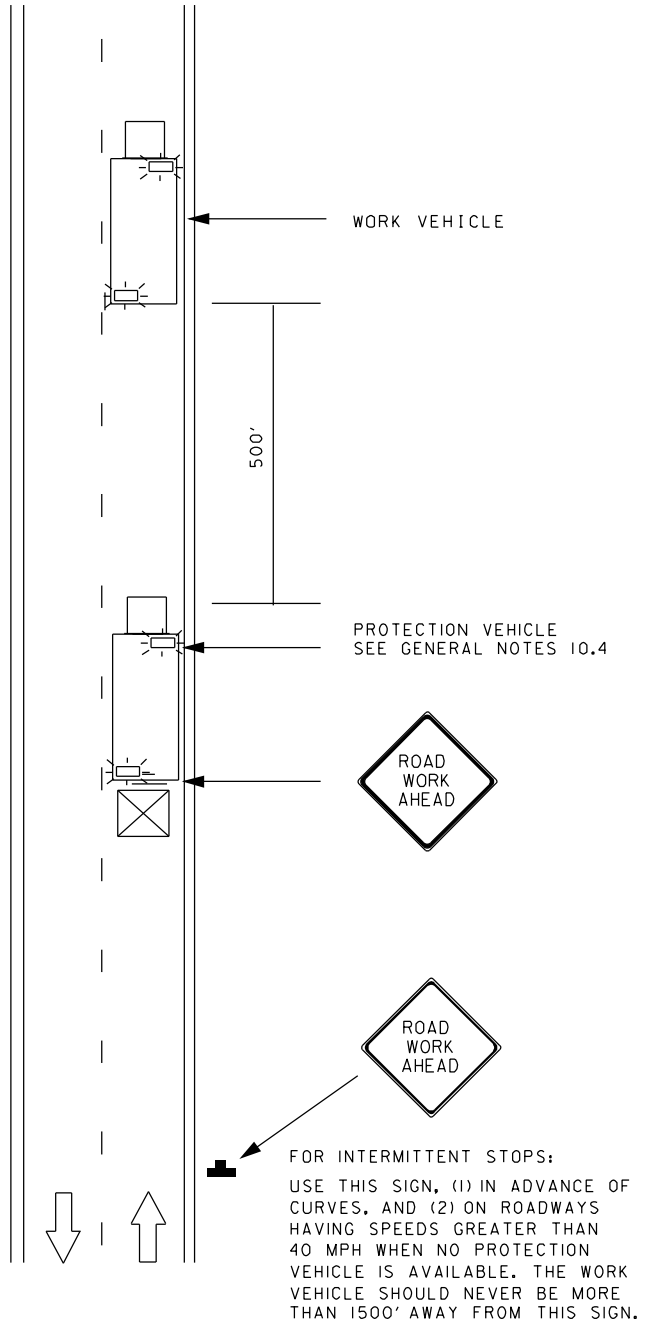
VEHICLES SHALL DISPLAY FLASHING HAZARD/PARKING LIGHTS IN FRONT AND REAR AS PER MD 104.01-18B.

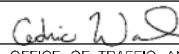

VEHICLES THAT STOP INTERMITTENTLY SHOULD BE DRIVEN, OR PARKED, OFF THE TRAVELED LANE WHENEVER POSSIBLE.

WHEN USED, THE PROTECTION VEHICLE MAY BE USED AS A SUBSTITUTE FOR THE WORK VEHICLE WHERE DIRECTED BY THE ENGINEER.

KEY:

-  SIGN SUPPORT
-  FACE OF SIGN
-  APPROVED VEHICLE SAFETY LIGHT
-  DIRECTION OF TRAFFIC
-  TRUCK OR TRAILER-TRUCK MOUNTED ATTENUATOR (TMA/TTMA)



SPECIFICATION 104	CATEGORY CODE ITEMS
APPROVED  DIRECTOR - OFFICE OF TRAFFIC AND SAFETY	
	APPROVAL • SHA REVISIONS
	APPROVAL • FEDERAL HIGHWAY ADMINISTRATION
	APPROVAL 8-20-03
	APPROVAL 9-23-03
REVISION 8-11-10	REVISION 7-29-10
REVISION 8-20-14	REVISION 8-11-14
REVISION	REVISION

Maryland Department of Transportation
STATE HIGHWAY ADMINISTRATION
STANDARDS FOR HIGHWAYS AND INCIDENTAL STRUCTURES

MOBILE OPERATION/2-LANE, 2-WAY
ALL SPEEDS/0-15 MIN., AND MOVING SLOW

STANDARD NO.

MD 104.02-15