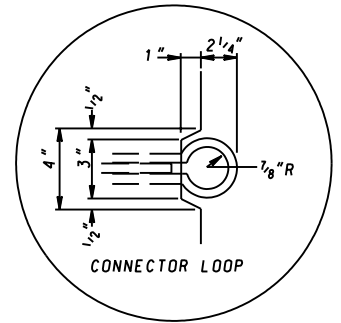
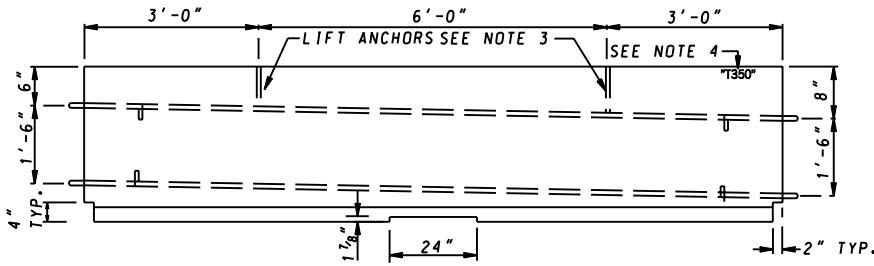


REINFORCEMENT SEE
DETAIL AND NOTE 1 A & B

PLAN



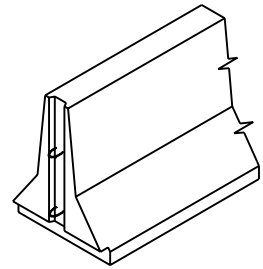
DETAIL A



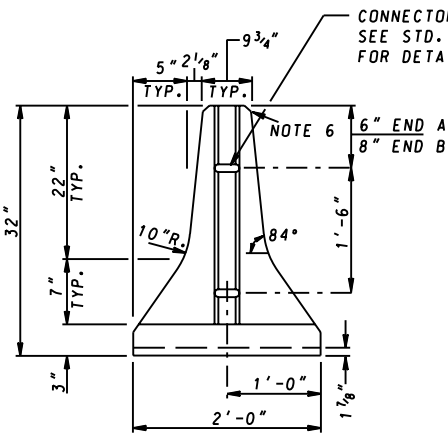
END A

ELEVATION

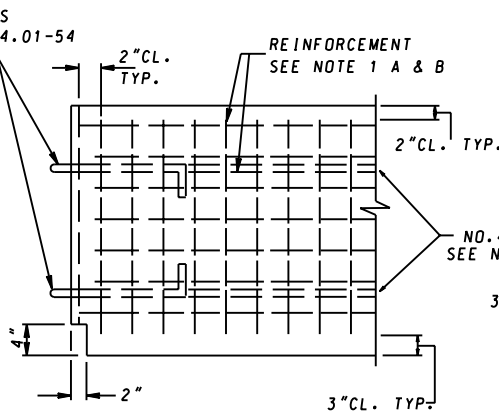
END B



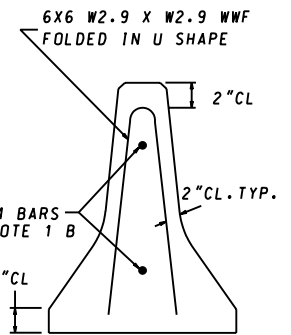
ISOMETRIC END VIEW



END VIEW



REINFORCEMENT DETAILS



NOTES

1. REINFORCEMENT: A) 6X6 W2.9 X W2.9 WELDED WIRE FABRIC FOLDED IN U SHAPE. B) 2- NO.4 1/2" Ø REINFORCEMENT BARS - GRADE 60 - EACH 11'-4" LONG.
2. CONCRETE SHALL BE MIX NO. 6 (4500 PSI).
3. 2 -SC52 - 2 TON LIFTING ANCHORS.
4. ALL BARRIERS SHALL HAVE "T350" IMPRINTED ON TOP END OF BARRIER.
5. 24" WIDE X 1 1/8" HIGH DRAIN PAN.
6. 3/4" CHAMFER ALONG TOP EDGES.
7. CONNECTOR LOOP - 3/4" Ø ROD ASTM 709 GRADE 36 PLAIN SHALL CONFORM TO ASTM A 153.

SPECIFICATION 104	CATEGORY CODE ITEMS
-----------------------------	---------------------

APPROVED *Kirk G. McCall*
DIRECTOR - OFFICE OF HIGHWAY DEVELOPMENT

	APPROVAL • SHA REVISIONS	APPROVAL • FEDERAL HIGHWAY ADMINISTRATION
	APPROVAL 2-10-04	APPROVAL 3-31-04
	REVISED 9-30-04	REVISED
	REVISED	REVISED

Maryland Department of Transportation
STATE HIGHWAY ADMINISTRATION
STANDARDS FOR HIGHWAYS AND INCIDENTAL STRUCTURES
PRECAST TEMPORARY 32 INCH
F SHAPE CONCRETE TRAFFIC BARRIER
(PIN AND LOOP JOINT)

STANDARD NO. MD 104.01-53