

SQUARE PLATE WASHER

WASHERS SHALL BE STEEL MEETING REQUIREMENTS OF ASTM A709 GR 36 AND GALVANIZED IN ACCORDANCE WITH ASTM A 153

W BEAM TERMINAL CONNECTOR
10 GAUGE

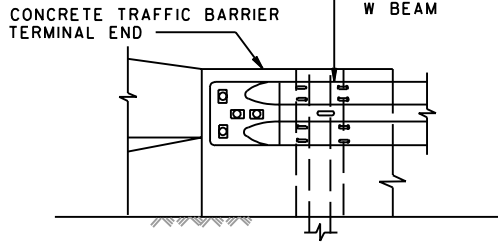
PRECAST TEMPORARY F SHAPE CONCRETE TRAFFIC BARRIER TERMINAL END RIGHT SIDE APPROACH SEE STD. MD 104.01-49

W BEAM TERMINAL CONNECTOR SPLICE BOLTED TO EXISTING W BEAM AND ANCHORED TO TRAFFIC BARRIER TERMINAL END

ISOMETRIC

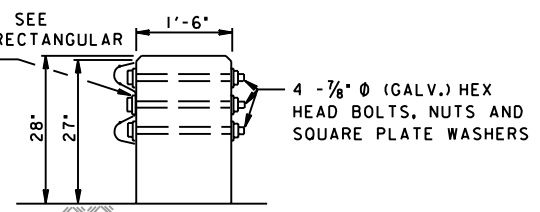
SEE STD. MD 104.01-47 FOR POST LAYOUT (1) THRU (5) & (A) THRU (D)

PLAN



ELEVATION

4 RECTANGULAR WASHERS SEE STD. MD 605.41-02 FOR RECTANGULAR WASHER DETAILS



SECTION A-A

NOTE

ANCHORAGE DETAILS

FOR PIN AND LOOP JOINT CONNECTOR SEE STD. MD 104.01-53 AND 104.01-54

SPECIFICATION 104	CATEGORY CODE ITEMS
APPROVED <i>Kirk G. McCall</i> DIRECTOR - OFFICE OF HIGHWAY DEVELOPMENT	
	APPROVAL • SHA REVISIONS APPROVAL 8-20-03
	APPROVAL • FEDERAL HIGHWAY ADMINISTRATION APPROVAL 9-23-03
	REVISED
	REVISED

Maryland Department of Transportation
STATE HIGHWAY ADMINISTRATION
STANDARDS FOR HIGHWAYS AND INCIDENTAL STRUCTURES
PRECAST TEMPORARY 32 INCH F SHAPE
CONCRETE TRAFFIC BARRIER TERMINAL END-
RIGHT SIDE APPROACH DETAILS

STANDARD NO. MD 104.01-48