

TEMPORARY TRAFFIC CONTROL TYPICAL APPLICATION

IMPORTANT:
THIS DRAWING SHALL BE USED IN COMBINATION WITH THE
GENERAL NOTES MD 104.00-01 - MD 104.00-18 AND STANDARD
DETAILS MD 104.01-01 - MD 104.01-81.

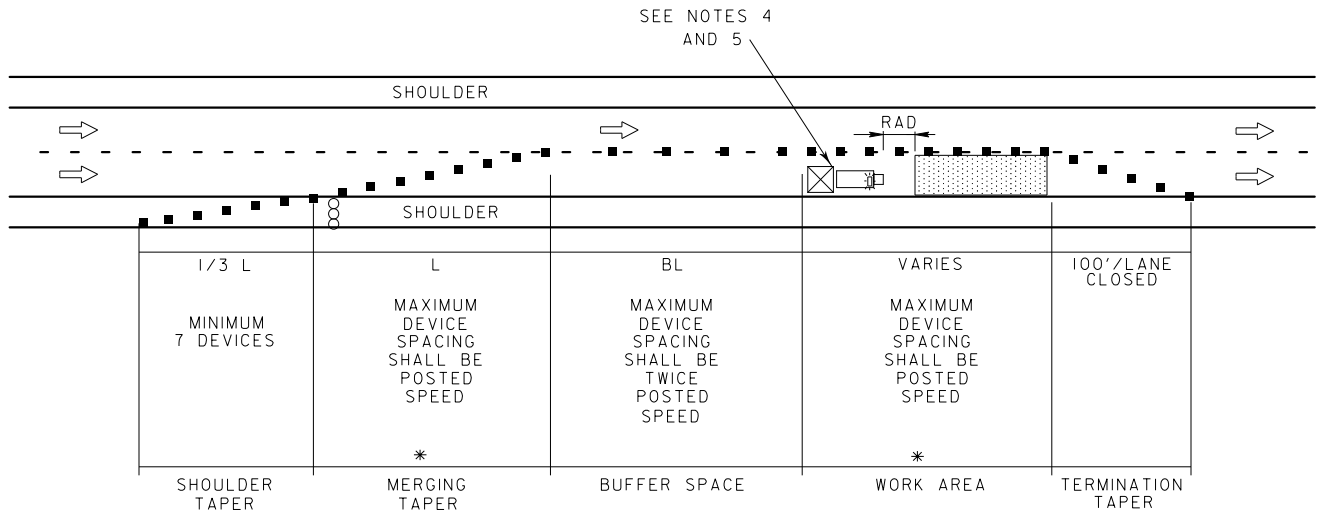
TALL WEIGHTED CONES ARE 42" TALL CONES WITH A WEIGHTED
BASE. SEE STANDARD SPECIFICATION 104.14.

NOTES

1. REFER TO GENERAL NOTE 7.8 FOR GUIDANCE ON USING CHANNELIZING DEVICES TO DELINEATE THE EDGE OF THE ROADWAY.
2. DRUMS, 36" CONES OR TALL WEIGHTED CONES SHALL BE USED IN THE MERGING TAPER.
3. DRUMS, 36" CONES OR TALL WEIGHTED CONES SHALL BE USED ADJACENT TO THE WORK AREA.
4. REFER TO GENERAL NOTE 10.4 AND MD 104.01-11A FOR GUIDANCE ON USING A PROTECTION VEHICLE (PV).
5. IF A PV IS USED TO PROTECT THE WORK AREA, IT SHOULD BE PLACED IN THE WORK AREA AS SHOWN IN THE FIGURE WHILE ALLOWING FOR THE ROLL AHEAD DISTANCE (RAD) ANTICIPATED WITH IMPACT. A PV MAY BE DEPLOYED IN THE BUFFER SPACE, PROVIDED IT IS IN PROXIMITY TO THE ACTIVE WORK AREA AND THE BUFFER LENGTH IS ADJUSTED TO INCLUDE THE LENGTH OF THE PV AND THE ANTICIPATED RAD.
6. REFER TO STANDARD MD 104.01-81 TO DETERMINE THE BUFFER LENGTH.
7. THIS TYPICAL APPLICATION DOES NOT APPLY TO PAVING OPERATIONS, BUT CAN BE USED AT THE DISCRETION OF THE ENGINEER.

KEY:

- ■ CHANNELIZING DEVICES
- ➔ DIRECTION OF TRAFFIC
- ▨ WORK AREA
- ∞ ARROW PANEL
- ☒ PROTECTION VEHICLE WITH TMA/TTMA



* DRUMS, 36" CONES OR TALL WEIGHTED CONES SHALL BE USED.

SPECIFICATION 104	CATEGORY CODE ITEMS	MARYLAND DEPARTMENT OF TRANSPORTATION STATE HIGHWAY ADMINISTRATION STANDARDS FOR HIGHWAYS AND INCIDENTAL STRUCTURES CHANNELIZATION DEVICE SPACING EQL/LESS THAN 40 MPH
APPROVED _____ DIRECTOR - OFFICE OF TRAFFIC AND SAFETY		
APPROVAL SHA REVISIONS	APPROVAL FEDERAL HIGHWAY ADMINISTRATION	
APPROVAL 7-1-09	APPROVAL 7-27-09	
REVISED 8-11-10	REVISED 7-29-10	
REVISED 2-19-24	REVISED 11-16-23	
REVISED	REVISED	STANDARD NO. MD 104.01-30 B