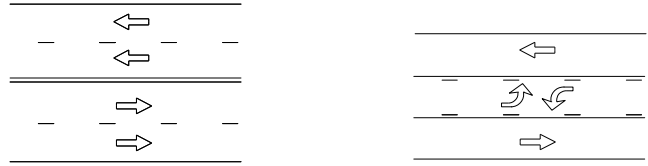


TEMPORARY TRAFFIC CONTROL TYPICAL APPLICATION TEMPORARY TRAFFIC CONTROL DEVICE SELECTION CHART



MULTILANE UNDIVIDED

LOCATION OF WORK	SPEED	DURATION	STANDARD TRAFFIC CONTROL DEVICES																	
			FLAGGER	VEHICLE LGTS	MARKINGS	ARROW PANEL	CHAN. DEVICES	PORTABLE VMS	SIGN LOCATIONS											
									NEXT_MILES	2 MILES	1 MILE	1/2 MILE	1500 FT	1000 FT	800 FT	500 FT	AHEAD **	BOTH SIDES		
ON ROAD	> 40 MPH	> 12 HRS/NIGHTTIME ○				×	×						×	×	×		×			
		15 MIN-12 HRS/DAYTIME □				×	×							×	×					
		< 15 MIN/LOCATION △		×		×													×	
		MOVING SLOW MOBILE *		×		×														×
		MOVING NORMAL MOBILE		×																
	≤ 40 MPH	> 12 HRS/NIGHTTIME ○					×	×						×	×	×		×		
		15 MIN-12 HRS/DAYTIME □					×	×						×	×			×		
		< 15 MIN/LOCATION △		×		/													×	
		MOVING SLOW MOBILE *		×		/													×	
		MOVING NORMAL MOBILE		×																
ADJACENT TO ROAD ***	> 40 MPH	> 12 HRS/NIGHTTIME ○					×						×	×			×			
		15 MIN-12 HRS/DAYTIME □					×							×	×					
	< 15 MIN/LOCATION △		×																×	
	≤ 40 MPH	> 12 HRS/NIGHTTIME ○					×							×	×			×		
		15 MIN-12 HRS/DAYTIME □					×								×	×				
		< 15 MIN/LOCATION △		×															×	

KEY : X -REQUIRED, / -OPTIONAL ○ -LONG TERM STATIONARY □ -SHORT TERM STATIONARY △ -SHORT DURATION ACTIVITY

* MOVING SLOW MEANS TRAVELING BELOW THE POSTED SPEED BY MORE THAN 15 MPH

** FOR MOVING OPERATIONS THE APPROPRIATE ADVANCE WARNING SIGNS MAY BE VEHICLE MOUNTED.

*** ADJACENT TO THE ROAD MEANS WITHIN 15 FEET OF THE EDGE LINE OR WITHIN 2 FEET FROM THE FACE OF CURB

NOTES

- REFER TO TEMPORARY TRAFFIC CONTROL DEVICE SELECTION CHART 104.01-11A FOR PROTECTION VEHICLE REQUIREMENTS.
- STANDARD TRAFFIC CONTROL DEVICES MOST COMMONLY REQUIRED IN WORK ZONE ARE SHOWN WITHIN THESE TEMPORARY TRAFFIC CONTROL SELECTION CHARTS. TYPICAL APPLICATIONS SHOULD BE ALTERED, WHEN NECESSARY, TO FIT UNIQUE WORK ZONE CONDITIONS. REFER TO THE GENERAL NOTES.

SPECIFICATION 104	CATEGORY CODE ITEMS		
APPROVED	<i>Cedric Wald</i> DIRECTOR - OFFICE OF TRAFFIC AND SAFETY		
APPROVAL SHA REVISIONS	APPROVAL FEDERAL HIGHWAY ADMINISTRATION		
APPROVAL	8-20-03	APPROVAL	9-23-03
REVISED	8-11-10	REVISED	7-29-10
REVISED	8-20-14	REVISED	8-11-14
REVISED	2-19-24	REVISED	11-16-23

MOT MARYLAND DEPARTMENT OF TRANSPORTATION
STATE HIGHWAY ADMINISTRATION

STANDARDS FOR HIGHWAYS AND INCIDENTAL STRUCTURES TEMPORARY TRAFFIC CONTROL DEVICE SELECTION CHART

STANDARD NO.

MD 104.01-09