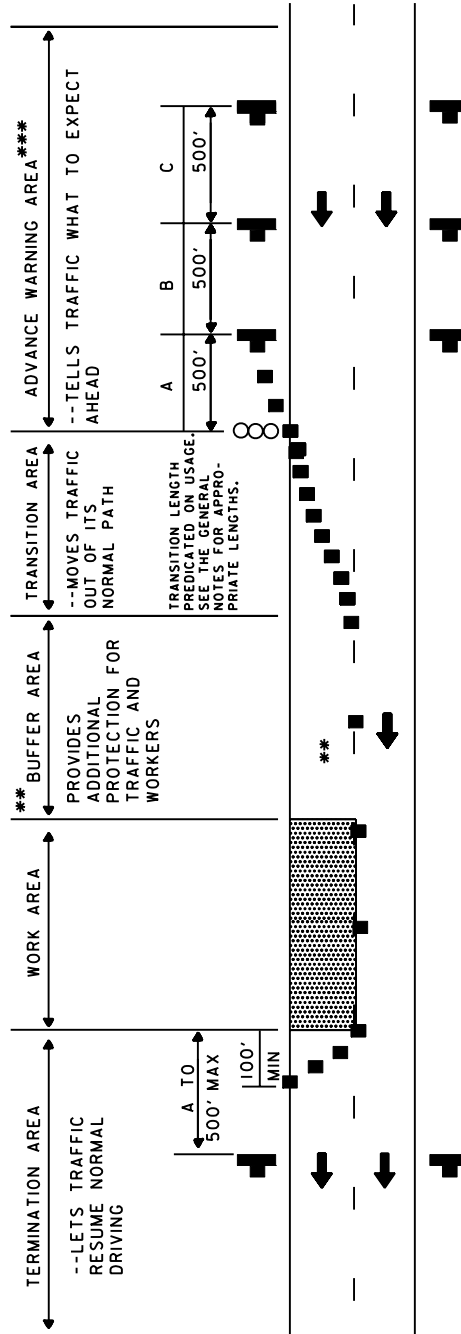


# TEMPORARY TRAFFIC CONTROL TYPICAL APPLICATION SIGN SPACING CHART STANDARD TEMPORARY TRAFFIC CONTROL OPERATIONS

* SPEED (MPH)	MINIMUM DISTANCE FROM TAPER TO FIRST SIGN & FOR SIDE STREET SIGN DISTANCE	ADDITIONAL SIGNS IN SERIES TO BE SPACED AT A MINIMUM			MINIMUM COMBINED ADVANCED WARNING
	A	B	C	D	
≤ 25	200'	200'	200'	-	600'
26 - 35	300'	300'	300'	-	900'
36 - 40	500'	500'	500'	-	1500'
41 - 65	800'	700'	1100'	2600' (1/2 MILE)	5200' (1 MILE)
EXPRESSWAY/FREEWAY	1000'	500'	1100'	2600' (1/2 MILE)	5200' (1 MILE)

\* SPEED LIMIT OR PREVAILING TRAVEL SPEED, WHICHEVER IS HIGHER.

BELOW EXAMPLE TWO LANES, ONE-WAY ROADWAY / SPEED LIMIT IS 35 MPH / PREVAILING SPEED IS 38 MPH (USE 40 MPH)



\*\*\* REFER TO STANDARD NO. MD 104.01-81 (TYPICAL APPLICATION NOTES) FOR BUFFER LENGTHS.

\*\*\* THERE SHALL BE A MINIMUM OF SEVEN CHANNELIZING DEVICES IN THE SHOULDER TAPER.

SPECIFICATION	CATEGORY CODE ITEMS
APPROVED	 DIRECTOR - OFFICE OF TRAFFIC AND SAFETY
	APPROVAL • SHA REVISIONS
	APPROVAL • FEDERAL HIGHWAY ADMINISTRATION
	APPROVAL 8-20-03
	APPROVAL 9-23-03
REVISED 8-11-10	REVISED 7-29-10
REVISED	REVISED
REVISED	REVISED

**Maryland Department of Transportation**  
**STATE HIGHWAY ADMINISTRATION**  
STANDARDS FOR HIGHWAYS AND INCIDENTAL STRUCTURES  
**SIGN SPACING CHART**

STANDARD NO.

MD 104.01-02