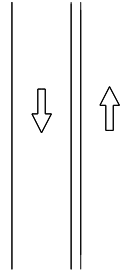


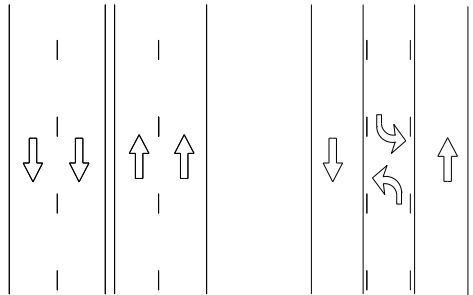
TEMPORARY TRAFFIC CONTROL TYPICAL APPLICATION ROADWAY/HIGHWAY TYPES

REFER TO MD 104.00 GENERAL NOTES FOR DEFINITIONS OF ROADWAY TYPES

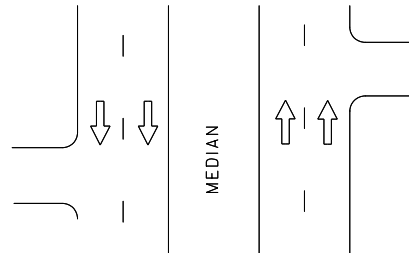
TWO-LANE, TWO-WAY



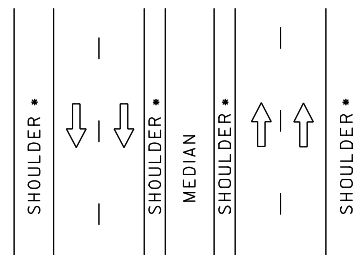
MULTI-LANE UNDIVIDED



**MULTI-LANE DIVIDED
UNCONTROLLED ACCESS**



**MULTI-LANE DIVIDED
CONTROLLED ACCESS
(EXPRESSWAY/FREEWAY)**



* SHOULDER IS NOT PRESENT ON ALL EXPRESSWAYS/FREEWAYS

SPECIFICATION	CATEGORY CODE ITEMS		
APPROVED	 DIRECTOR - OFFICE OF TRAFFIC AND SAFETY		
APPROVAL REVISIONS	SHA	APPROVAL	FEDERAL HIGHWAY ADMINISTRATION
APPROVAL	8-20-03	APPROVAL	9-23-03
REVISED	2-19-24	REVISED	11-16-23
REVISED		REVISED	
REVISED		REVISED	

MOT MARYLAND DEPARTMENT OF TRANSPORTATION
STATE HIGHWAY ADMINISTRATION

STANDARDS FOR HIGHWAYS AND INCIDENTAL STRUCTURES ROADWAY/HIGHWAY TYPES

STANDARD NO.

MD 104.01-01