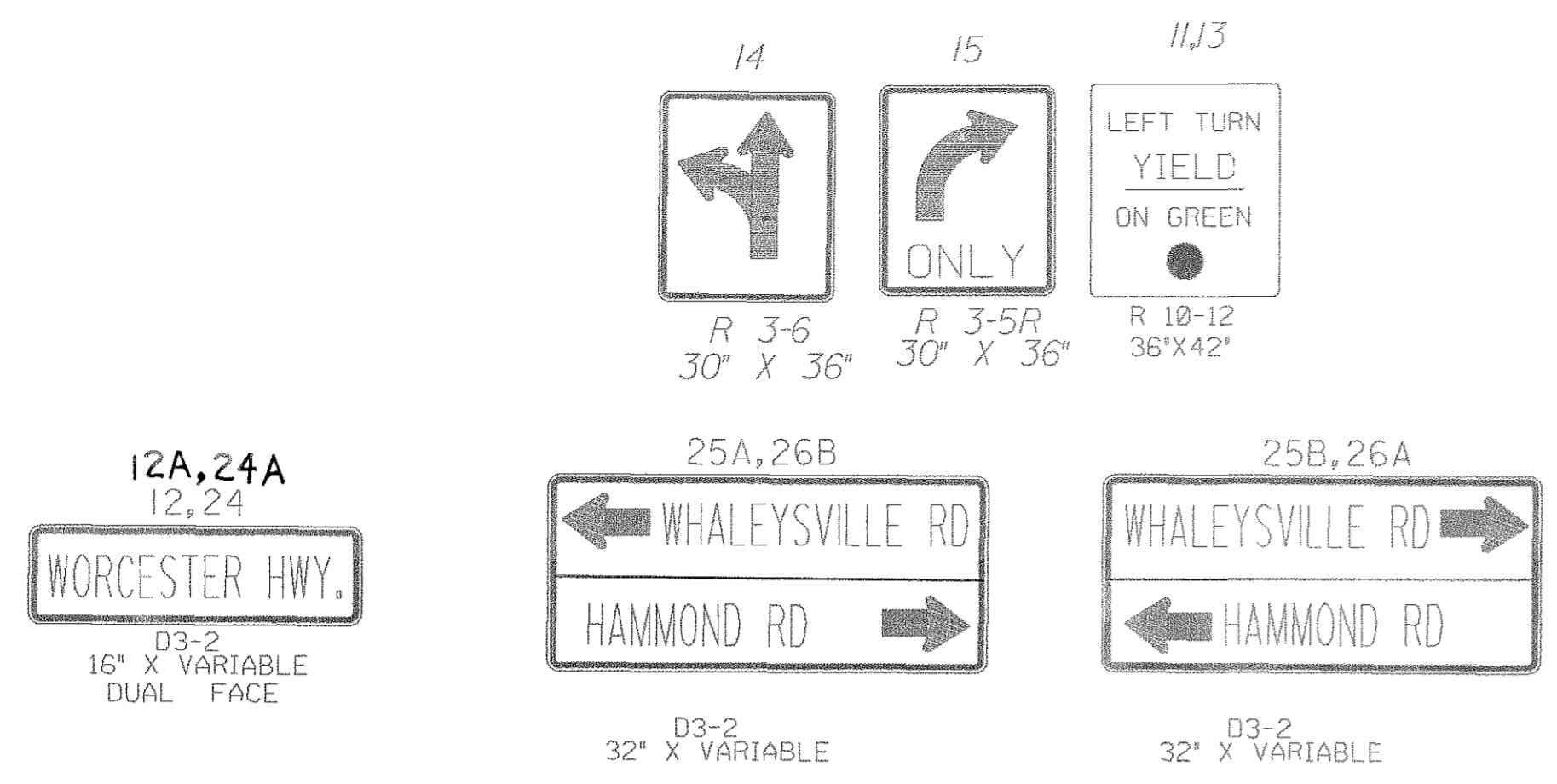
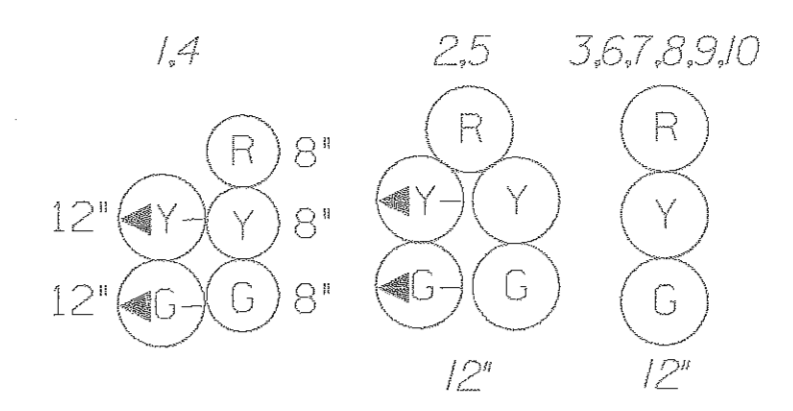


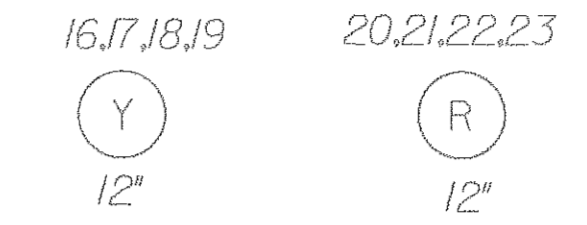
SIGNS



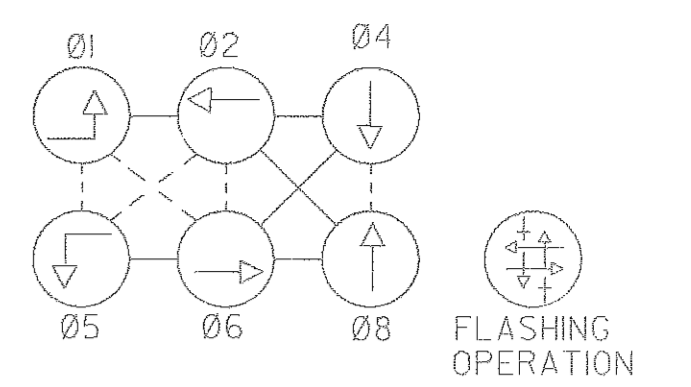
PROPOSED SIGNALS



EXISTING SIGNALS

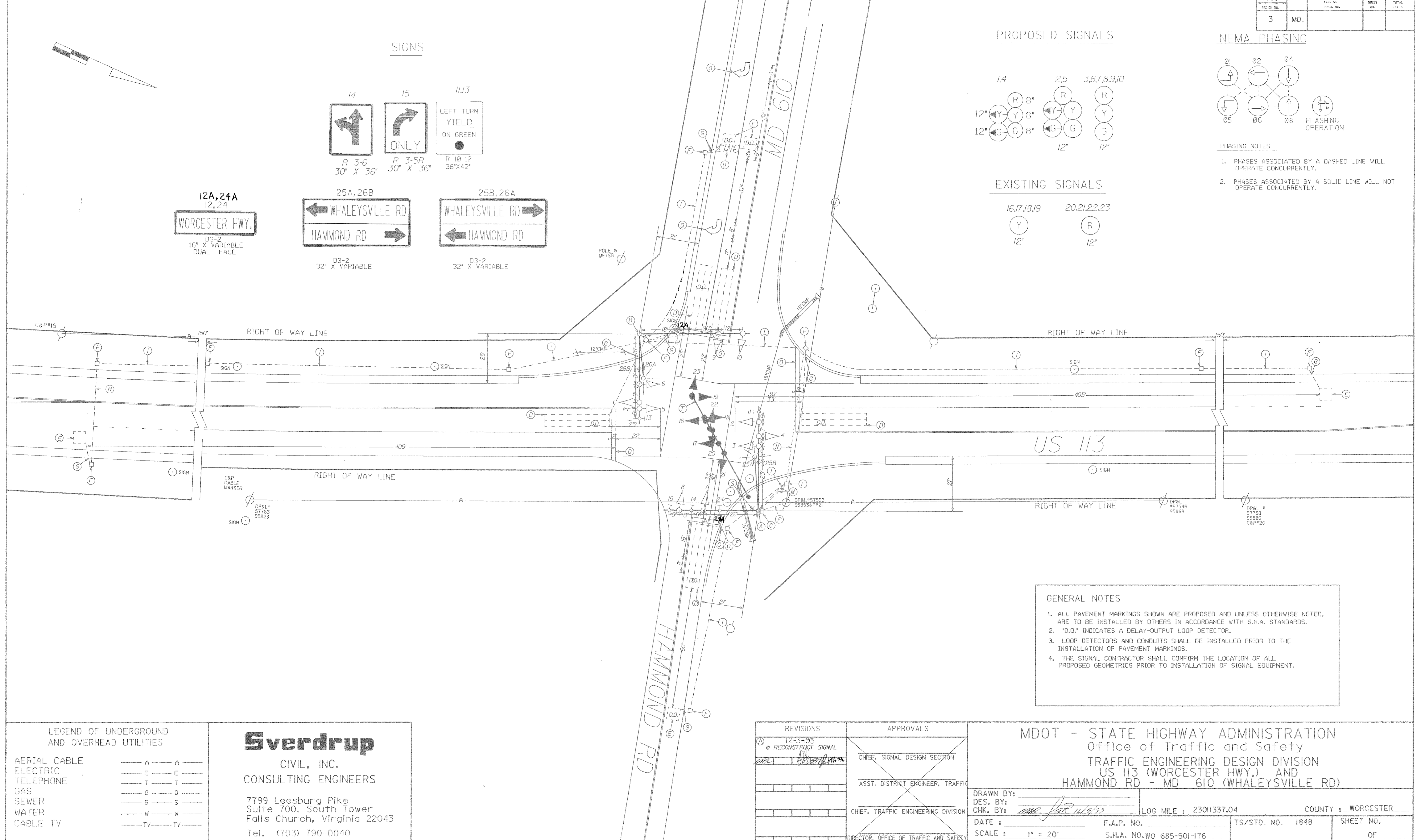


NEMA PHASING



PHASING NOTES

1. PHASES ASSOCIATED BY A DASHED LINE WILL OPERATE CONCURRENTLY.
2. PHASES ASSOCIATED BY A SOLID LINE WILL NOT OPERATE CONCURRENTLY.



GENERAL NOTES

1. ALL PAVEMENT MARKINGS SHOWN ARE PROPOSED AND UNLESS OTHERWISE NOTED, ARE TO BE INSTALLED BY OTHERS IN ACCORDANCE WITH S.H.A. STANDARDS.
2. "D.O." INDICATES A DELAY-OUTPUT LOOP DETECTOR.
3. LOOP DETECTORS AND CONDUITS SHALL BE INSTALLED PRIOR TO THE INSTALLATION OF PAVEMENT MARKINGS.
4. THE SIGNAL CONTRACTOR SHALL CONFIRM THE LOCATION OF ALL PROPOSED GEOMETRICS PRIOR TO INSTALLATION OF SIGNAL EQUIPMENT.

LEGEND OF UNDERGROUND AND OVERHEAD UTILITIES

AERIAL CABLE	— A — A —
ELECTRIC	— E — E —
TELEPHONE	— T — T —
GAS	— G — G —
SEWER	— S — S —
WATER	— W — W —
CABLE TV	— TV — TV —

Sverdrup
CIVIL, INC.
CONSULTING ENGINEERS

7799 Leesburg Pike
Suite 700, South Tower
Falls Church, Virginia 22043
Tel. (703) 790-0040

REVISIONS	APPROVALS
12-3-93 RECONSTRUCT SIGNAL	CHIEF, SIGNAL DESIGN SECTION
	ASST. DISTRICT ENGINEER, TRAFFIC
	CHIEF, TRAFFIC ENGINEERING DIVISION
	DIRECTOR, OFFICE OF TRAFFIC AND SAFETY

MDOT - STATE HIGHWAY ADMINISTRATION
Office of Traffic and Safety
TRAFFIC ENGINEERING DESIGN DIVISION
US 113 (WORCESTER HWY.) AND
HAMMOND RD - MD 610 (WHALEYSVILLE RD)

DRAWN BY: _____
DES. BY: _____
CHK. BY: *ONE JAR 12/6/93*

DATE: _____ F.A.P. NO. _____ TS/STD. NO. 1848 SHEET NO. _____
SCALE: 1" = 20' S.H.A. NO. WO 685-501-176 COUNTY: WORCESTER

LOG MILE: 23011337.04