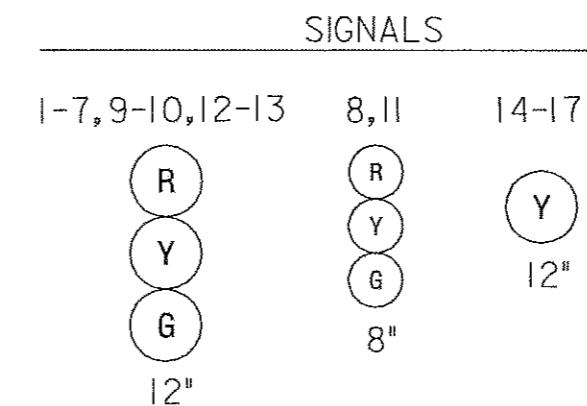
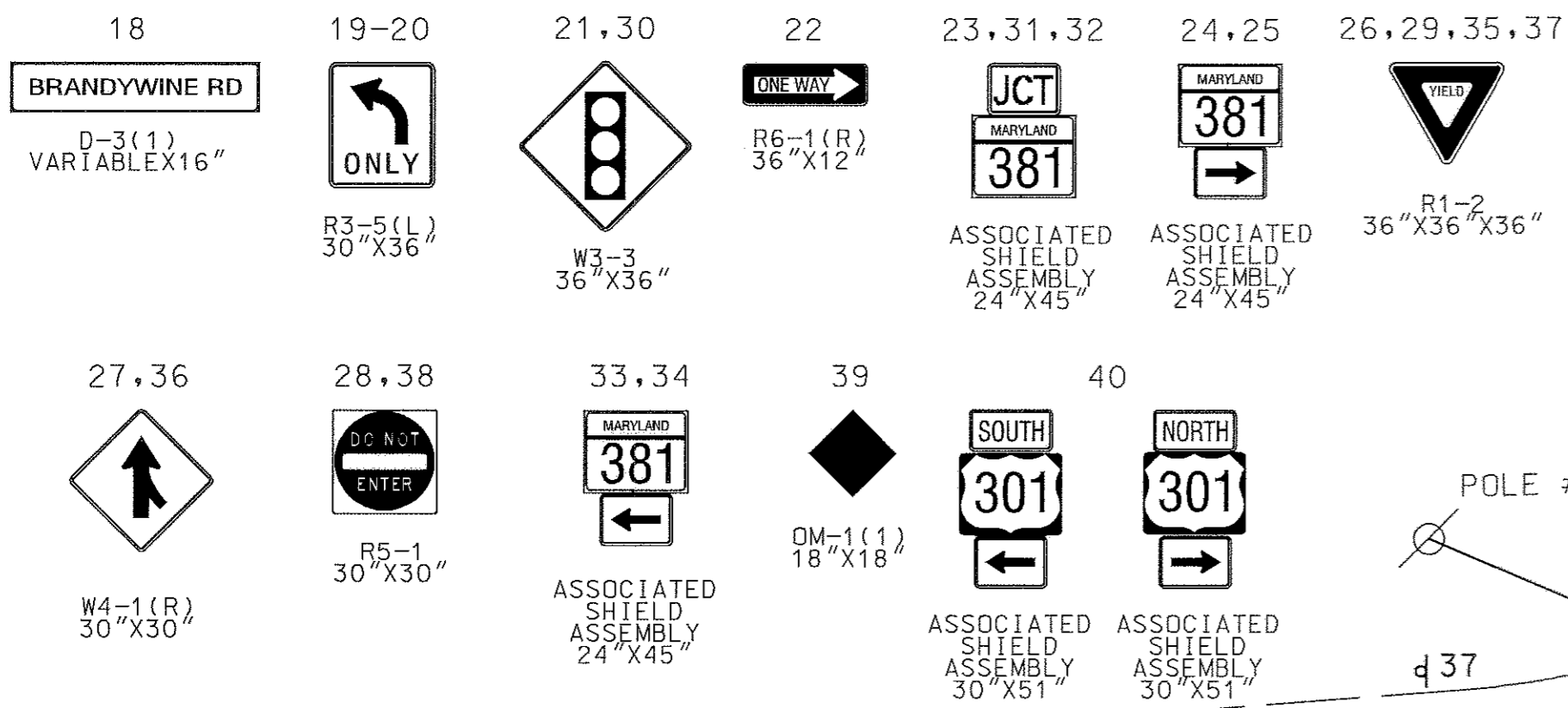
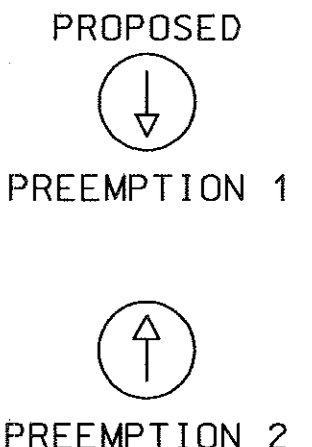
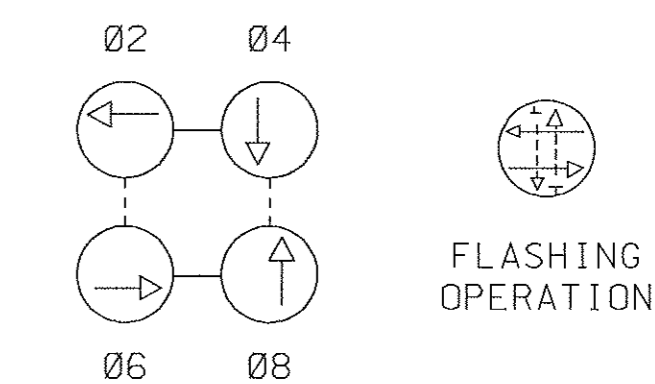


US 301 IS ASSUMED TO RUN  
IN A NORTH-SOUTH DIRECTION

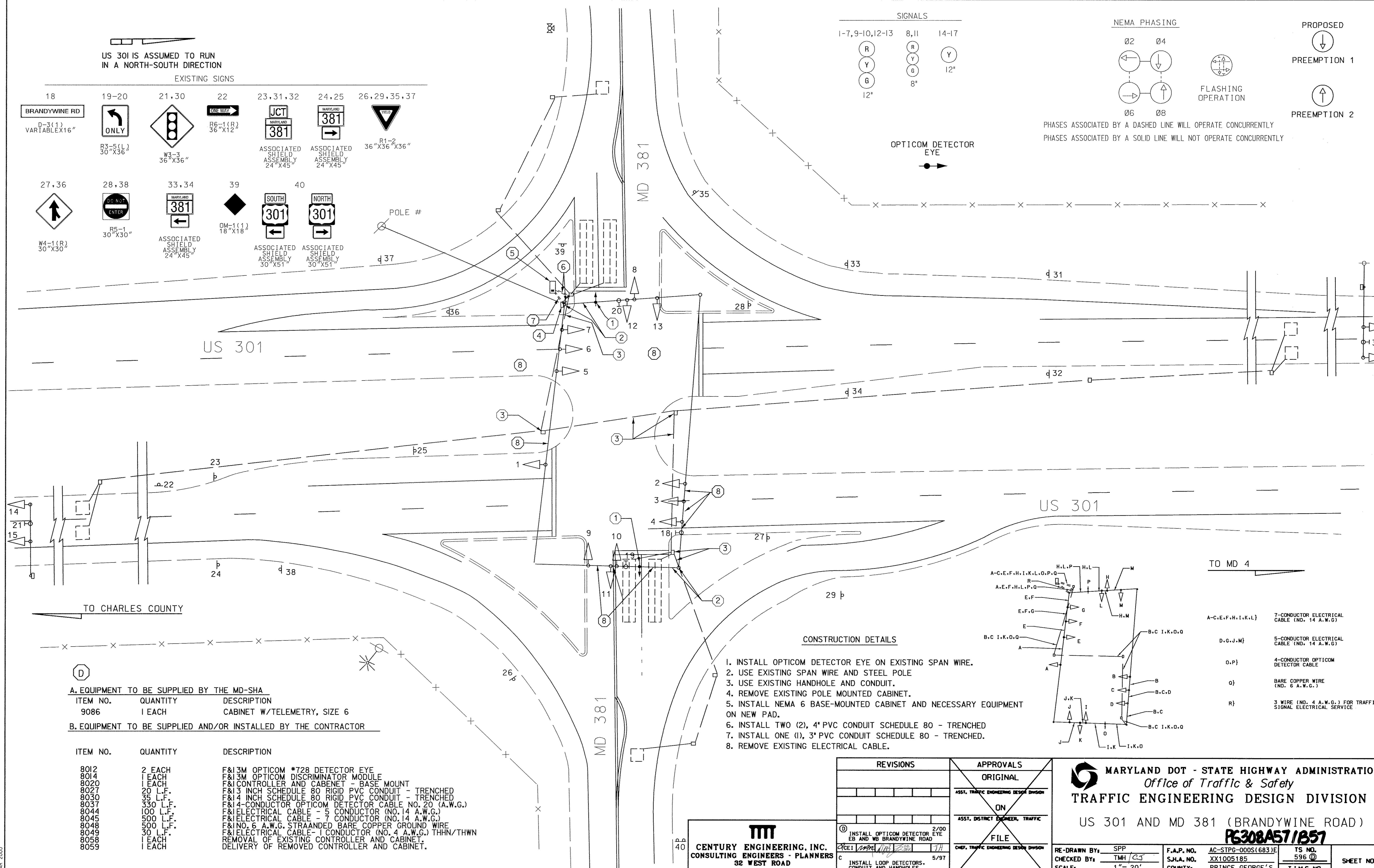
EXISTING SIGNS



NEMA PHASING



PHASES ASSOCIATED BY A DASHED LINE WILL OPERATE CONCURRENTLY  
PHASES ASSOCIATED BY A SOLID LINE WILL NOT OPERATE CONCURRENTLY



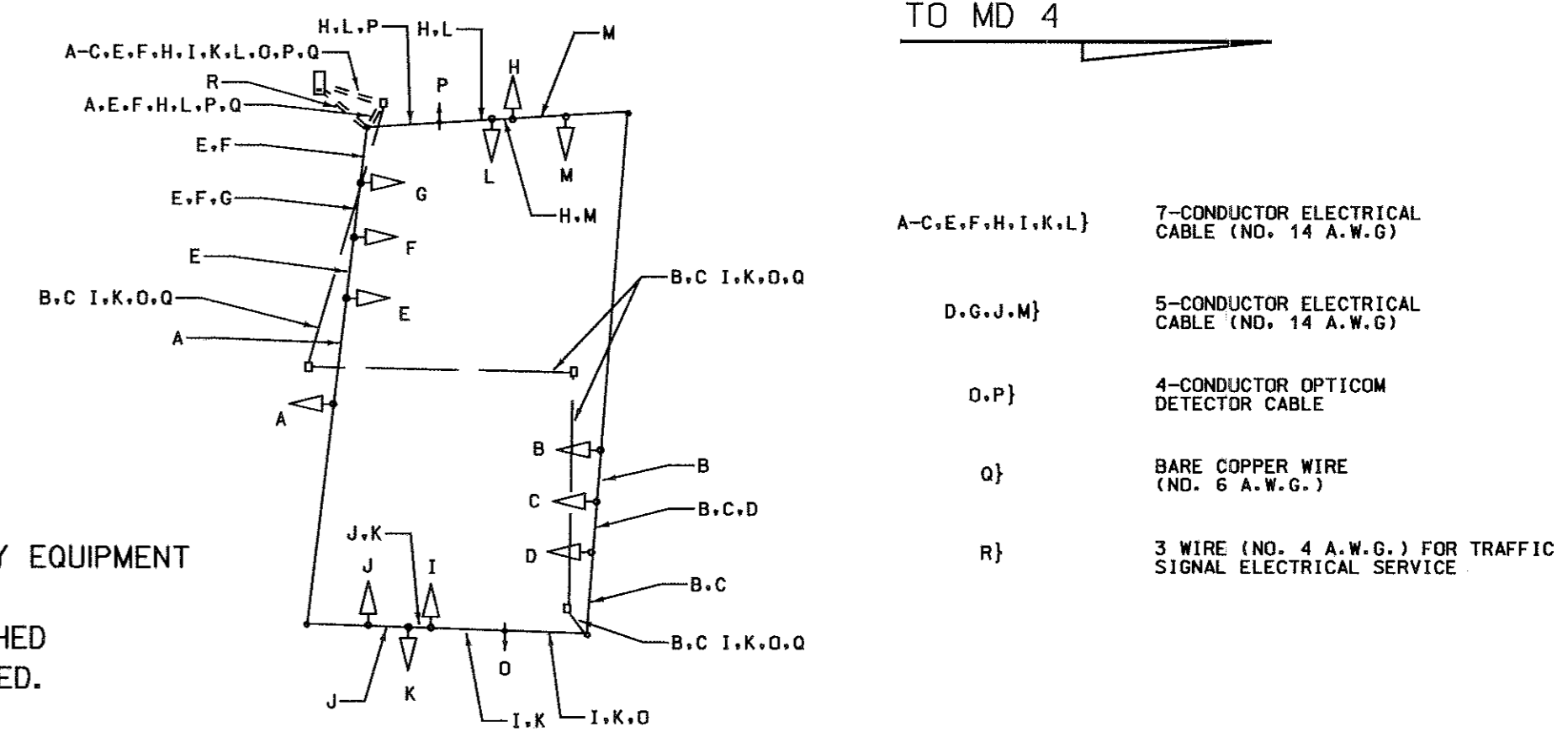
**A. EQUIPMENT TO BE SUPPLIED BY THE MD-SHA**

ITEM NO.	QUANTITY	DESCRIPTION
9086	1 EACH	CABINET W/TELEMETRY, SIZE 6

**B. EQUIPMENT TO BE SUPPLIED AND/OR INSTALLED BY THE CONTRACTOR**

ITEM NO.	QUANTITY	DESCRIPTION
8012	2 EACH	F&I 3M OPTICOM #728 DETECTOR EYE
8014	1 EACH	F&I 3M OPTICOM DISCRIMINATOR MODULE
8020	1 EACH	F&I CONTROLLER AND CABINET - BASE MOUNT
8027	20 L.F.	F&I 3 INCH SCHEDULE 80 RIGID PVC CONDUIT - TRENCHED
8030	35 L.F.	F&I 4 INCH SCHEDULE 80 RIGID PVC CONDUIT - TRENCHED
8037	330 L.F.	F&I 4-CONDUCTOR OPTICOM DETECTOR CABLE NO. 20 (A.W.G.)
8044	100 L.F.	F&I ELECTRICAL CABLE - 5 CONDUCTOR (NO. 14 A.W.G.)
8045	500 L.F.	F&I ELECTRICAL CABLE - 7 CONDUCTOR (NO. 14 A.W.G.)
8048	500 L.F.	F&I NO. 6 A.W.G. STRAUNDED BARE COPPER GROUND WIRE
8049	30 L.F.	F&I ELECTRICAL CABLE - 1 CONDUCTOR (NO. 4 A.W.G.) THHN/THWN
8058	1 EACH	REMOVAL OF EXISTING CONTROLLER AND CABINET.
8059	1 EACH	DELIVERY OF REMOVED CONTROLLER AND CABINET.

- CONSTRUCTION DETAILS**
1. INSTALL OPTICOM DETECTOR EYE ON EXISTING SPAN WIRE.
  2. USE EXISTING SPAN WIRE AND STEEL POLE
  3. USE EXISTING HANDHOLE AND CONDUIT.
  4. REMOVE EXISTING POLE MOUNTED CABINET.
  5. INSTALL NEMA 6 BASE-MOUNTED CABINET AND NECESSARY EQUIPMENT ON NEW PAD.
  6. INSTALL TWO (2), 4" PVC CONDUIT SCHEDULE 80 - TRENCHED
  7. INSTALL ONE (1), 3" PVC CONDUIT SCHEDULE 80 - TRENCHED.
  8. REMOVE EXISTING ELECTRICAL CABLE.



REVISIONS	APPROVALS
	ORIGINAL
	ASST. TRAFFIC ENGINEERING DESIGN DIVISION
	ON
	ASST. DISTRICT ENGINEER, TRAFFIC
	FILE
	CHIEF, TRAFFIC ENGINEERING DESIGN DIVISION
	DIRECTOR, TRAFFIC & SAFETY

**CEI**  
**CENTURY ENGINEERING, INC.**  
CONSULTING ENGINEERS - PLANNERS  
32 WEST ROAD  
TOWSON, MARYLAND 21204

**MARYLAND DOT - STATE HIGHWAY ADMINISTRATION**  
Office of Traffic & Safety  
**TRAFFIC ENGINEERING DESIGN DIVISION**  
US 301 AND MD 381 (BRANDYWINE ROAD)  
**PG308A571B57**

RE-DRAWN BY: SPP	F.A.P. NO. AC-STPG-0005(683)E	TS NO. 596	SHEET NO. 7 OF 24
CHECKED BY: TMH/CJS	S.H.A. NO. XX1005185	T.I.M.S. NO. D565	
SCALE: 1" = 20'	COUNTY: PRINCE GEORGE'S		
DATE: 2/21/00	LOG MILE: 16030103.12		

01: mtr: c:\mtr\eng\7006\31\us301\brandywine\381.dgn  
 21 MAR 2000